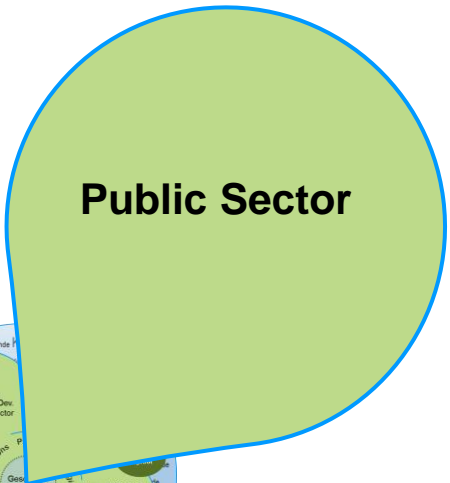


42. Forum der ArcGIS-Usergroup NRW Aktuelles aus der Esri Deutschland GmbH

Hans Dietrich, Esri Deutschland GmbH

Paderborn, 23.10.2015





Public Sector

Public Sector

Erwin Dirscherl

Geoinformation
Andreas Carstens

Kommunal
Peter Feuerborn

Militär und öffentliche Sicherheit
Marko Prisky

Natur, Umwelt, Ressourcen
Benedikt Pointner

Private Sector

Stefan Jung

Bildung, Wissenschaft, Forschung
Grischa Gundelsweiler

Dienstleistung und Handel
Stefan Endres

Energie und Industrie
Gerhard Hartema

Telekommunikation
Christoph Zonsius

Transport, Verkehr, Logistik
Philipp Greiff



Private Sector

Neuer Esri Standort in Berlin



Karl-Liebknecht-Strasse 5
10178 Berlin
Tel.: +49 89 207 005 1563
Mail: info@berlin.esri.de



Kursangebot



- **ArcGIS 1: Einstieg in die GIS-Anwendung**
Münster, 16. – 17.11./ Köln, 7. – 8.12.
- **ArcGIS 2: Wichtige Workflows**
Münster, 18. – 20.11./ Köln, 09. – 11.12.
- **ArcGIS Pro: Einführung für GIS-Professionals**
Münster, 15. – 16.12.
- **ArcGIS for Server: Administration**
Köln, 18. – 20.11.



Sign In



GeoNet

The Esri Community

Alle Bereiche > Vermessung, Ingenieurwesen und Kartografie

Ereignisse

Workshop ArcGIS und FME für Ingenieurbüros in Münster am 17. November 2015

erstellt von [v.kirsteinesri-de-esridist](#) am 16.10.2015 00:57, geändert am 20.10.2015 06:39

BESCHREIBUNG

Für die gesamte geodatenbezogene Projektbearbeitung in Ingenieurbüros ist ArcGIS die Plattform. Sie wird ergänzt durch FME für eine Integration von Daten unterschiedlichster Herkunft in Ihr GIS.

Erleben Sie im Rahmen dieses Workshops, wie Sie einen Mehrwert aus Ihren Geodaten erzeugen können. Wir möchten die Umsetzung der Einsatzszenarien gemeinsam mit Ihnen erarbeiten, beim

**Workshop ArcGIS und FME für Ingenieurbüros
Dienstag, 17. November, von 10:00 bis 15:00 Uhr,**

Esri Niederlassung Münster,
Martin-Luther-King-Weg 24, 48155 Münster

Zusammen mit unserem Partner con terra stellen wir typische ArcGIS und FME Workflows vor und zeigen diese an realen Anwendungsfällen. Bitte melden Sie sich per Fax oder E-Mail bis zum 2. November 2015 an. Den Anmeldebogen finden Sie weiter unten im Anhang.

Wir freuen uns, Sie in Münster zu begrüßen.

Melden Sie sich an, um teilzunehmen

TEILNAHME (2)

- [s.lohmoelleresri-de-esridist](#)
- [v.kirsteinesri-de-esridist](#)

KEINE TEILNAHME

Niemand hat bis jetzt die Teilnahme am Ereignis abgelehnt.

UNTER VORBEHALT

Niemand nimmt bis jetzt unter Vorbehalt am Ereignis teil.

AKTIONEN

[Zum Kalender hinzufügen](#)

WEITERE ÄHNLICHE THEMEN

Inhalte können nicht vom Server abgerufen werden:



InGeoForum

Geoinformation in der Cloud

Grundlagen, Anwendungen und Services

26.11.2015

EINLADUNG ZUR VERANSTALTUNG

Die gelungene Seminarreihe „Geoinformation in der Cloud“ des InGeoForum findet ihre nächste Fortsetzung am 26. November 2015 beim Regionalverband Ruhr RVR in Essen.

Es werden flexible und bedarfsbezogene IT-Services aus der Cloud anhand ausgewählter Praxisbeispiele mit GEO-Bezug vorgestellt. Anhand interessanter Einsatzfelder wird der Nutzen der neueren Cloud-Technologien für den sicheren und effizienten Einsatz auf der Grundlage bestehender IT-Technologien gezeigt.

WANN UND WO

Termin:

Mittwoch, 26.11.2015

Beginn: 10.00 Uhr

Ende: 17.00 Uhr

.....
Veranstaltungsort:

Regionalverband Ruhr

Kronprinzenstraße 35 (Haupthaus)

45128 Essen

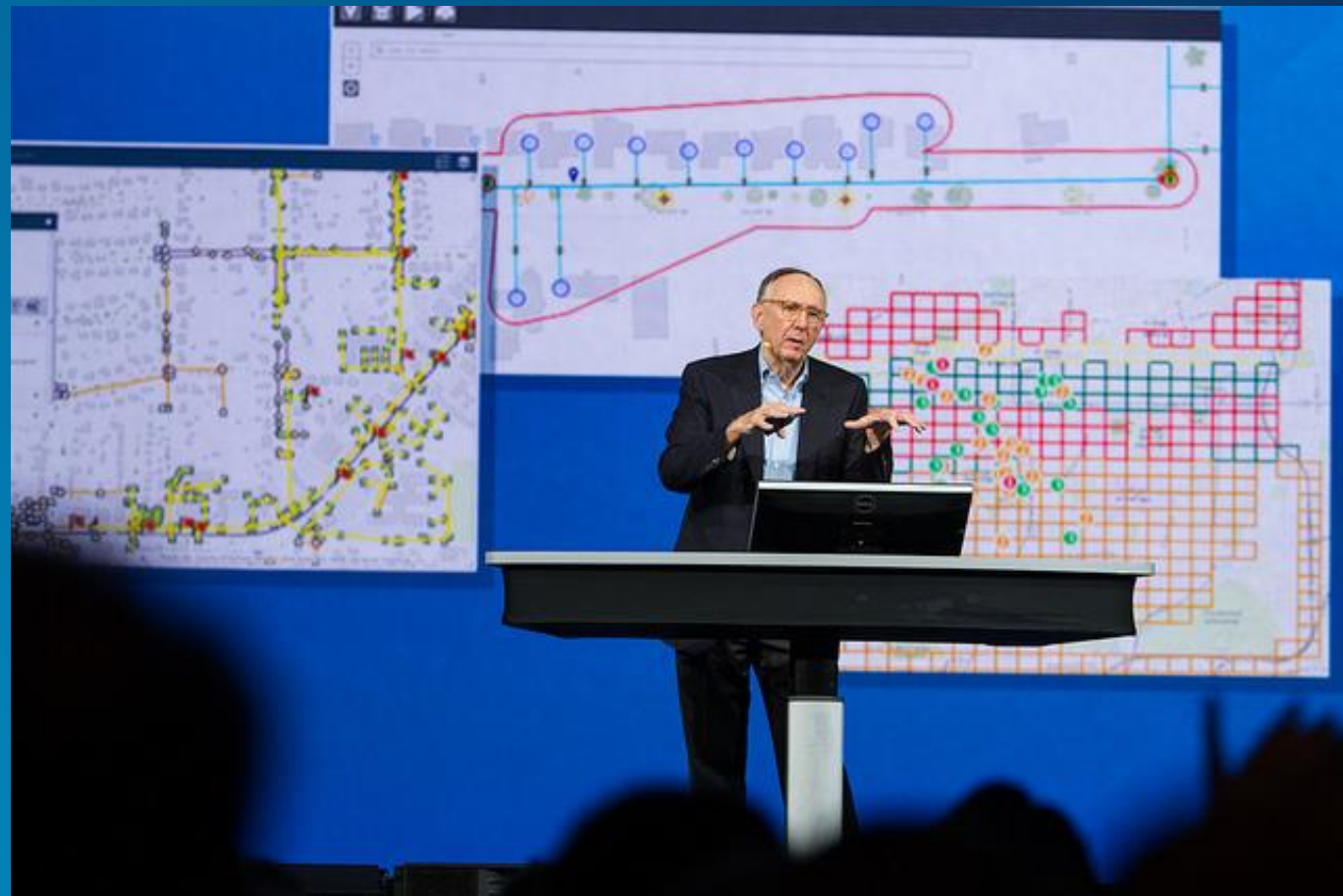


USER CONFERENCE

APPLYING GEOGRAPHY EVERYWHERE







GIS Provides the Framework and Process

For Applying Geography



We

Are Entering a Period of Geographic Enlightenment

GIS Is Awakening the World
to the Power of Geography

And Creating a Better Future



Web GIS Is a Transformational Architecture

Opening, Integrating and Simplifying Everything

Web GIS



*Bringing Together Your Existing Systems . . .
and Creating a System of Engagement*



Road Map

▶ Advancing the Platform

Big data Mobile
GeoAnalytics Massive 3D
Crowdsourcing **Vector tiles**
Utility networks

Advanced navigation

Web raster analysis

Real-time
Location awareness

Modeling UAV/Drone

Pro
Distributed GIS

Incremental Software Release

10.4

Pro 1.2

10.3.1 Pro 1.1

10.3 Pro 1.0

2016

Continuous Online Improvements

2015

... Focused on Quality, User Needs, and Innovation

Online ▶ Hosted Web GIS

Apps

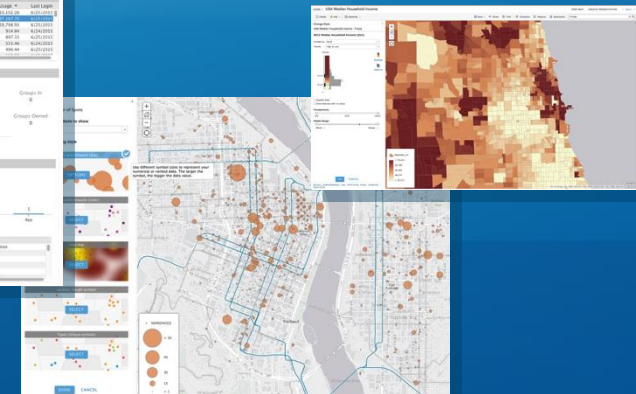


New and Improved

- **Smart Mapping**
- Formal Metadata
- Better Administration
- Enhanced Printing
- Geocoding

What's Coming

- Improved Search
- Advanced Analysis
- **Enhanced OGC Support**
- Bing Map Support



Providing Online Mapping, Apps, and Content

A Complete SaaS Solution

Open Platform

Ensuring Data and System Interoperability

Standards



A green pyramid diagram containing various standards and protocols. The OGC logo is at the bottom right.

- WMS
- GML
- WCS
- KML
- SQL
- WWW
- WFS
- CSW
- SOAP
- WMTS
- OPENDAP
- IFC
- SLD
- ISO
- WPS
- NetCDF
- GeoPackage
- LAS
- REST

OGC
Principal Member

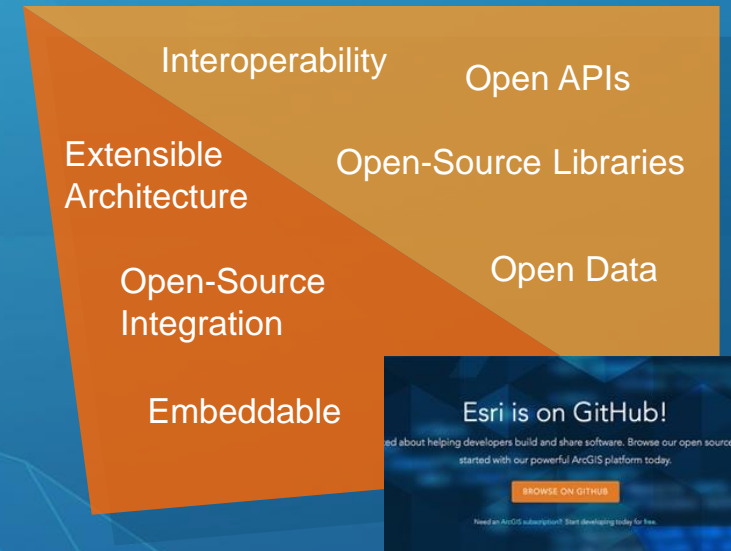
Industry Formats



A blue pyramid diagram containing various industry formats and data types.


- WaterML
- Web Scene (I3S)
- Imagery
- OLEDB
- DXF
- Hadoop
- CityGML
- DBMS
- COLLADA
- AIXM
- DWG
- DGN
- OneGeology
- INSPIRE
- FileGDB
- Shapefiles

Open Software



An orange pyramid diagram containing various open software concepts.

- Interoperability
- Open APIs
- Extensible Architecture
- Open-Source Libraries
- Open-Source Integration
- Open Data
- Embeddable



Esri is on GitHub!
Interested about helping developers build and share software. Browse our open source code started with our powerful ArcGIS platform today.
[BROWSE ON GITHUB](#)
Need an ArcGIS subscription? Start developing today for free.

Open

... Integrated Into Thousands of Systems

Apps

▶ Making ArcGIS Available Everywhere

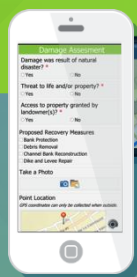


Field

Navigator



Workforce



Survey123



Collector

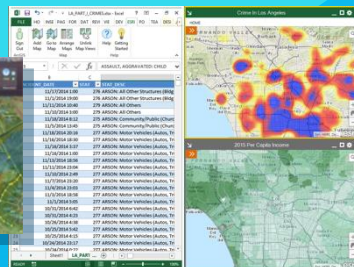
Mobile
(Connected & Disconnected)

Office

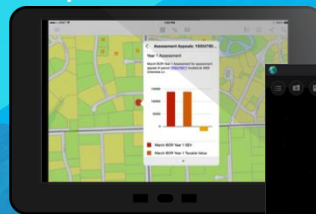
ArcGIS for AutoCAD



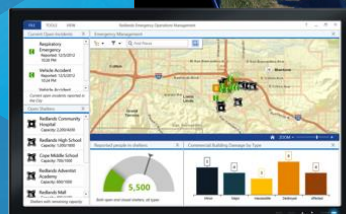
Maps for Office



Explorer



ArcGIS Earth



Dashboard

Public

Open Data



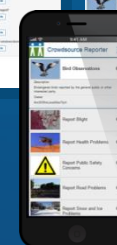
Story Maps



Photo Survey



Crowdsourcing



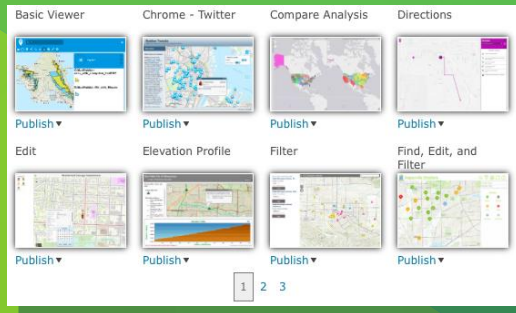
Configurable Solutions That Work Together

Easy, Focused, and Ready-to-Use

App Builders

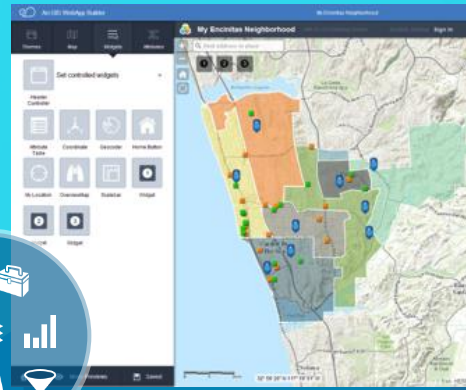
▶ Enabling App Creation

Web App Templates



20+

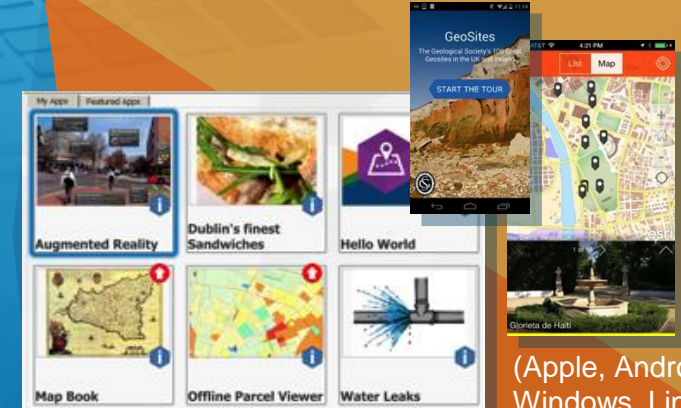
Web AppBuilder



Widgets

HTML5/JavaScript

AppStudio



(Apple, Android, Windows, Linux)

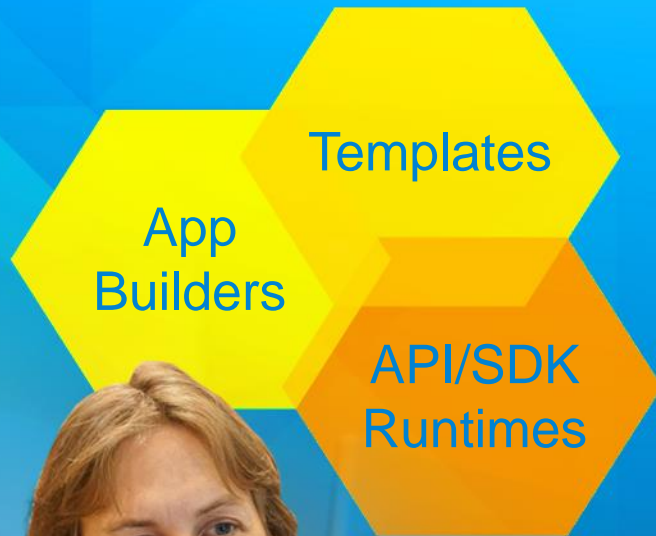
Native Apps

Providing Easy, Configurable, and Extensible Tools

Design Once, Run Everywhere . . .

Developer Tools

▶ Enabling App Development for the Enterprise and Beyond



HTML5 Android

C# QML REST Java

Swift .NET Python Web

Windows JavaScript C++

Apple Qt Xamarin

Objective-C

Providing Rich APIs, Runtimes, Content, and Services

Desktop

Professional GIS



New and Improved

- Geoprocessing
- Space-Time Modeling
- Image Processing
- LAS Tools
- **Customization of Pro**

Coming

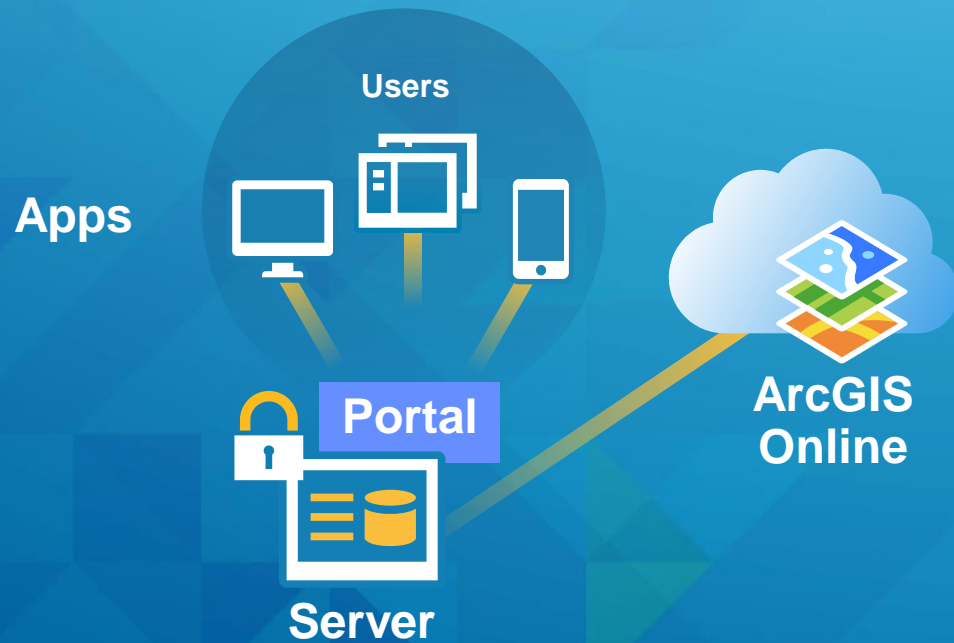
- More Analytics & 3D
- **Vector Tiles**
- Mobile Map Packages
- Better Metadata
- **Concurrent Pro Licensing**

Providing Mapping, Visualization, Editing, and Analysis

... Simplifying and Improving

Server

► Enterprise Web GIS in Your Infrastructure



New and Improved

- **Smart Mapping**
- 3D Web Scenes
- Spatial Analysis
- Azure Support
- Stronger Linux
- Geocoding

What's Coming

- **Big Data GeoAnalytics**
- **New Utility Network**
- GeoJSON
- Google Cloud
- **Distributed Portals**



Providing Enterprise Management, Analysis, and Mapping

... Supporting On-Premises and Cloud Platforms



ESRI USER CONFERENCE

June 27 – July 1, 2016 | San Diego Convention Center

CALL FOR PAPERS ▾ AGENDA ▾ SESSIONS ▾ EXHIBITS ▾ ACTIVITIES ▾ HOTELS ▾

2015 UC Proceedings

Online Resources

Access presenter materials from **technical workshops** and **paper sessions**.

Technical Workshop Recordings

Order the 2015 Esri UC Technical Workshop Recordings for \$499. Technical workshop recordings are offered by Source of Knowledge on SynchVue Enterprise Set.

SynchVue includes:

- Projected slides, videos, and demos synchronized seamlessly with speaker audio
- Secure site that can be accessed anywhere via the Web
- Effortless sharing with the Enterprise License

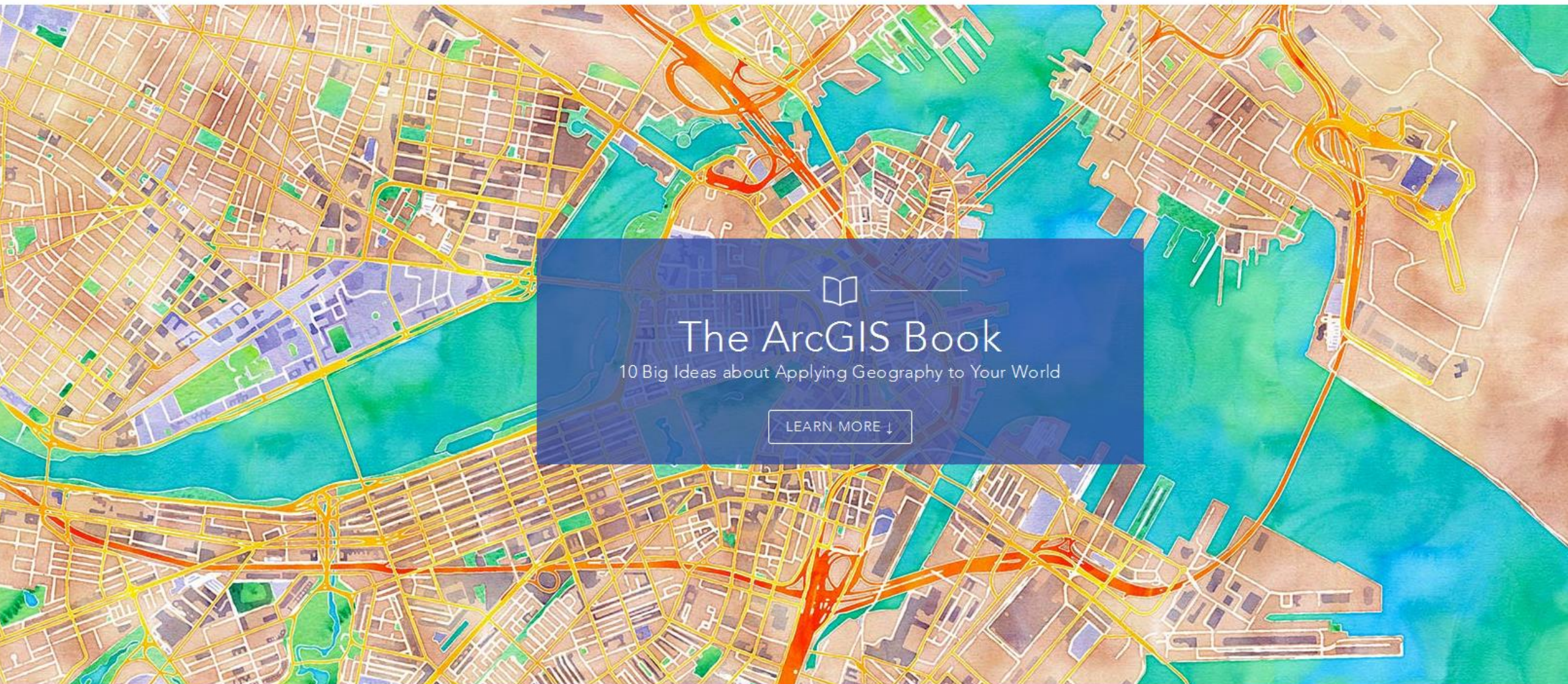
Streaming Includes:

- A time limitation for viewing
- Access for one person at a time
- Recordings that are streaming only and cannot be downloaded or shared
- Requires an internet connection

USB Thumb Drive Includes:

- No time limitation
- Files that can be copied and shared internally in your organization
- Files that can be loaded onto your internal server
- Require no internet connection

[Order Recordings Now](#)



Explore ten "big ideas" that encapsulate the technological and social trends that have pushed geographic information systems (GIS) onto the Internet in a significant way. See how to apply these ideas to your own world. Open your eyes to what is now possible with Web GIS, and put the technology and deep data resources in your hands in the *Guides to WorldView*. A GIS book that is not just a book, but a book that is a book.



Esri Disaster Response Program

Main GIS for Emergency Management

Help when you need it most

When disaster strikes, Esri's Disaster Response Program (DRP) is there to support you around the clock, 24 x 7. Request assistance from Esri experts, augment software, explore content, and monitor events online as part of our corporate citizenship. We're there when you need us most.

Request assistance and monitor the following event types:



Earthquakes



Volcanoes



Humanitarian Crisis



Spill

Recent Incidents

- | | |
|----------------------------------|--------------------|
| ▪ Tianjin, China Explosion | Request Assistance |
| ▪ Nepal Earthquake Maps | Request Assistance |
| ▪ Santa Barbara, CA Oil Spill | Request Assistance |
| ▪ US Tornado Outbreak | Request Assistance |
| ▪ Napa Earthquake Impact Summary | Request Assistance |
| ▪ Ebola Outbreak | Request Assistance |
| ▪ Typhoon Haiyan/Yolanda | Request Assistance |

GIS Resources

- Explore Esri DRP in ArcGIS Online
- Explore Esri DRP Open Data Portal
- Embed Our Public Information Maps
- Follow us on LinkedIn, Facebook, or Twitter

Learn more about how GIS is used for Emergency Management.

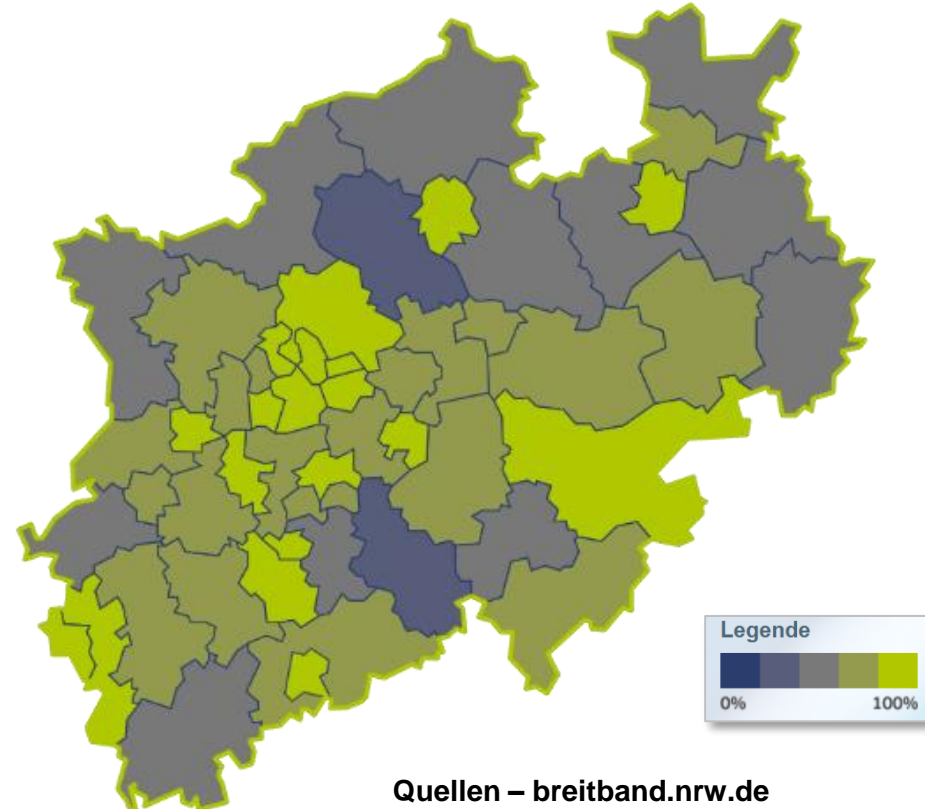
Tweets

Nordic Geospatial @nordicgeo 11 Oct
Compelling #refugee route #dataviz @IOM_news migration.iom.int/europe @hotosm @assocCartONG @UNHCRIM @ICRC @UNOCHA pic.twitter.com/2I8tZu2Sp6
Retweeted by EsriDisasterResponse
Show Photo

Esri Public Safety @GISPublicSafety 8 Oct
Inside the Seattle Police Department's new real-time crime center
geekwire.com/2015/inside-th... via @GeekWire #Esri #ArcGIS
Retweeted by EsriDisasterResponse
Show Summary

SCEMD @SCEMD 7 Oct
Tweet to @EsriDRP

Glasfasernetze für den Breitbandausbau automatisiert und kostenoptimiert planen – eine Herausforderung auch für Kommunen



Quellen – breitband.nrw.de
Breitband-Daten: TÜV Rheinland
Statistik: Landesdatenbank NRW & IT NRW
Karten: Deutsche Wikipedia

Die Unternehmen der Esri Deutschland Group GmbH



Esri Deutschland Group GmbH Kranzberg

Esri Deutschland GmbH Kranzberg

Niederlassung Berlin

Niederlassung Bonn

Niederlassung Hannover

Niederlassung Köln

Niederlassung Leipzig

Niederlassung Münster



Esri Rwanda Ltd. Kigali



Esri Rwanda Ltd. Kigali



Geocom Informatik AG Burgdorf

Standort Nyon

Standort Zürich

Geocom Informatik GmbH Kranzberg

Standort Hamburg

Standort Köln



Esri Schweiz AG Zürich

Niederlassung Nyon



con terra GmbH Münster



Geosecure Informatik GmbH Bonn