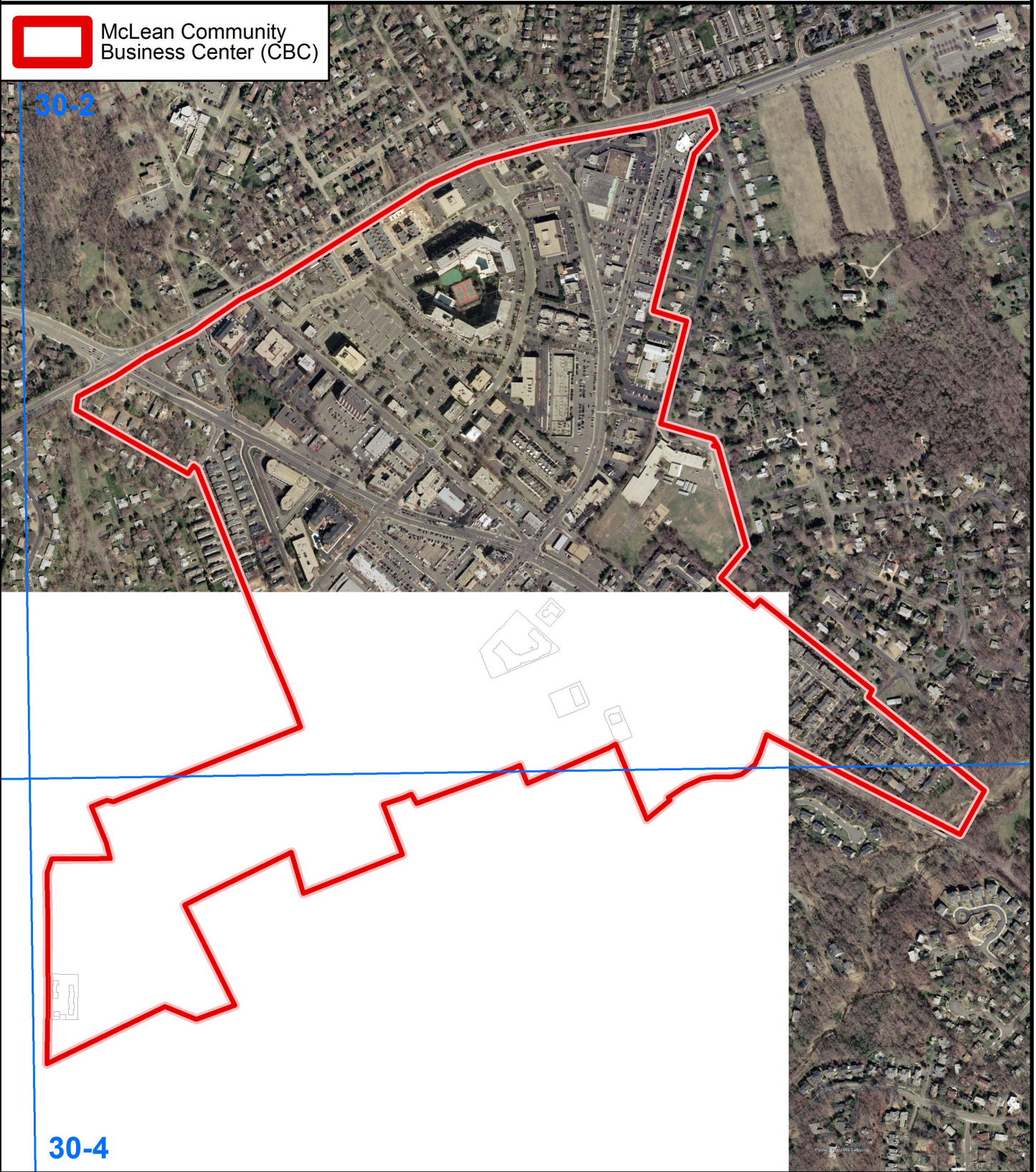


McLEAN COMMUNITY BUSINESS CENTER (CBC) - 2002



McLean Community Business Center (CBC)

30-2



30-4

1000 FEET

PREPARED BY THE DEPARTMENT OF PLANNING AND ZONING USING FAIRFAX COUNTY GIS
PARCEL INFORMATION CURRENT TO SEPTEMBER 2016
AERIAL FLIGHT DATE MARCH 2002

G:\projects\loctp\pdav\projects\2016\McLeanCBCProject_for_KBI\Projects\McLeanCBC2002aerial_letter_repair_version.mxd

