



# Getting to Know Esri Community Maps

Christophe Charpentier, Deane Kensok, Seth Sarakaitis

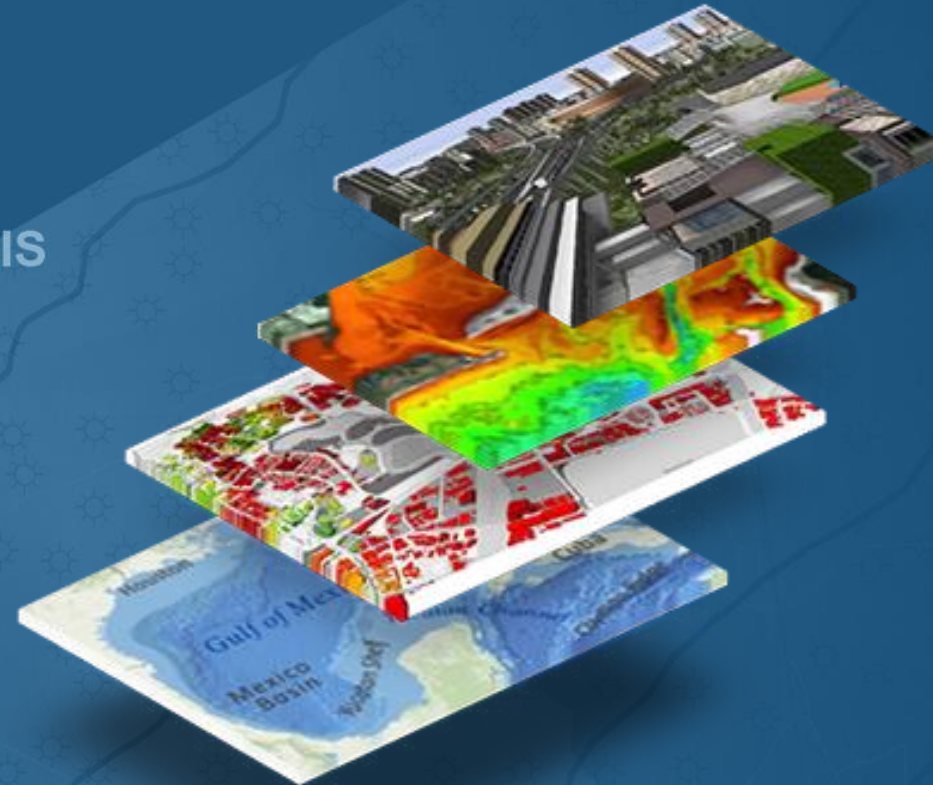
Technical Workshop

# Session Agenda

- **ArcGIS includes a Living Atlas**
  - **Role of Community**
- **Community Maps Opportunities**
  - **Demo: Community Maps Tour**
- **Community Map Participation Process**
  - **Demo: Contributor Apps & Data Prep Tools**
- **Future of Community Maps – Our Vision**
- **Questions & Answers**

# Content is integral to the Platform

The heartbeat of the System ...



... to Map, Understand and Analyze the World  
... in the Cloud and on-premises

# ArcGIS includes a Living Atlas of the World

Maps and Layers from Esri and Thousands of Contributors



Curated Content for Many Topics

- Basemaps
- Boundaries
- Elevation
- Hydro
- Habitats
- Hazards
- Oceans
- Urban Systems
- Observations
- Demographics
- Historical
- Imagery
- Transportation
- Soils
- Land Cover
- Landscape
- Weather

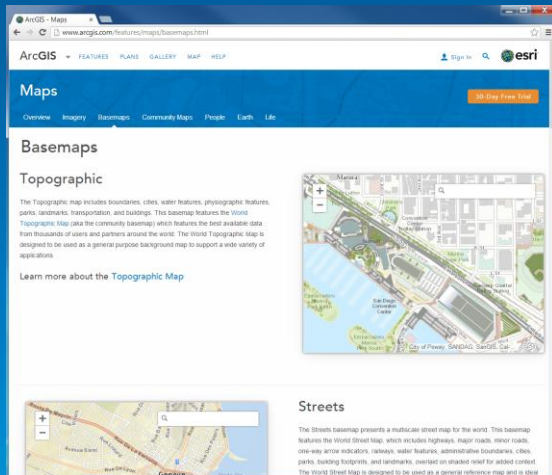


Collection is Growing and Changing on a Daily Basis

... Providing a Foundation for Your Work

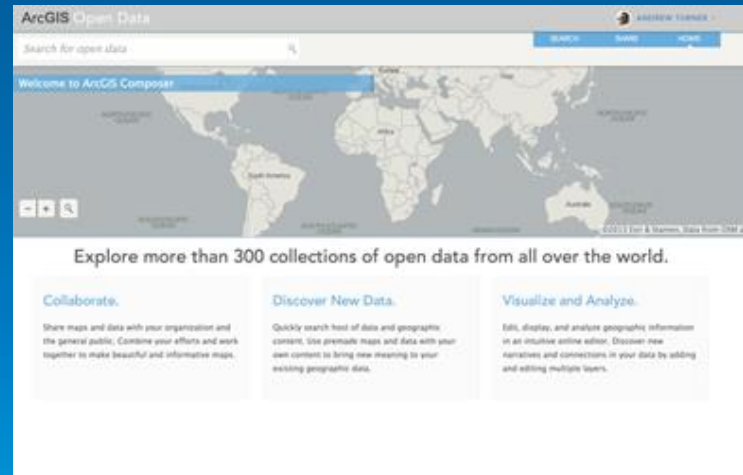
# Content is published by Esri, User Community and Partners

## Esri

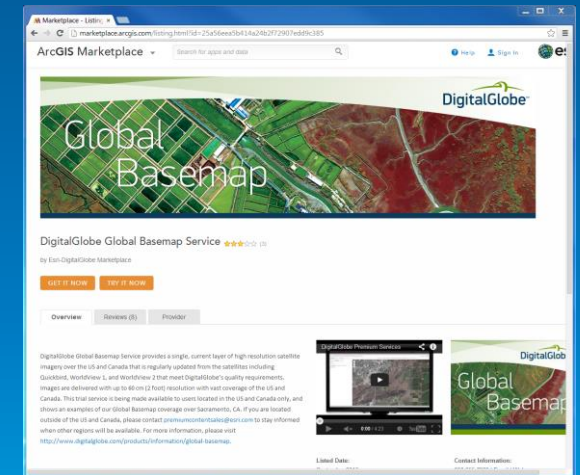


Foundational Map Layers

## Community



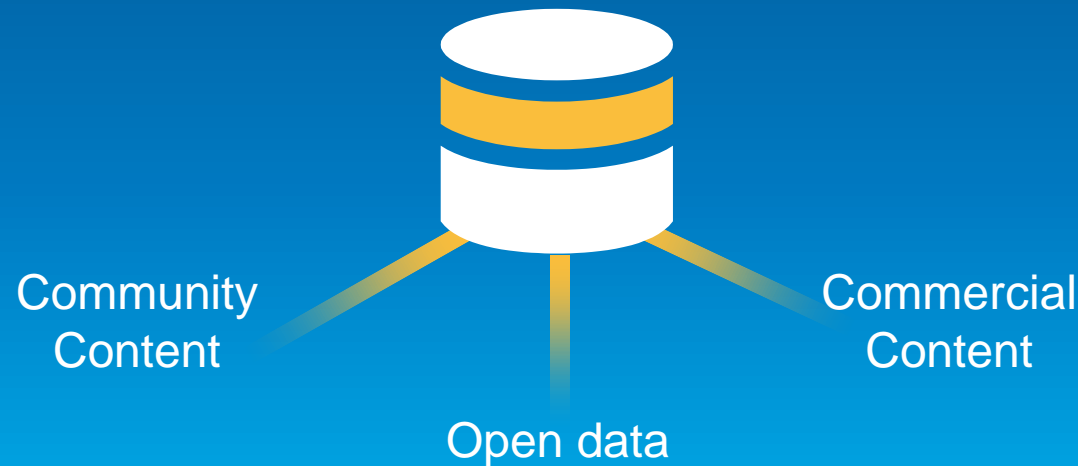
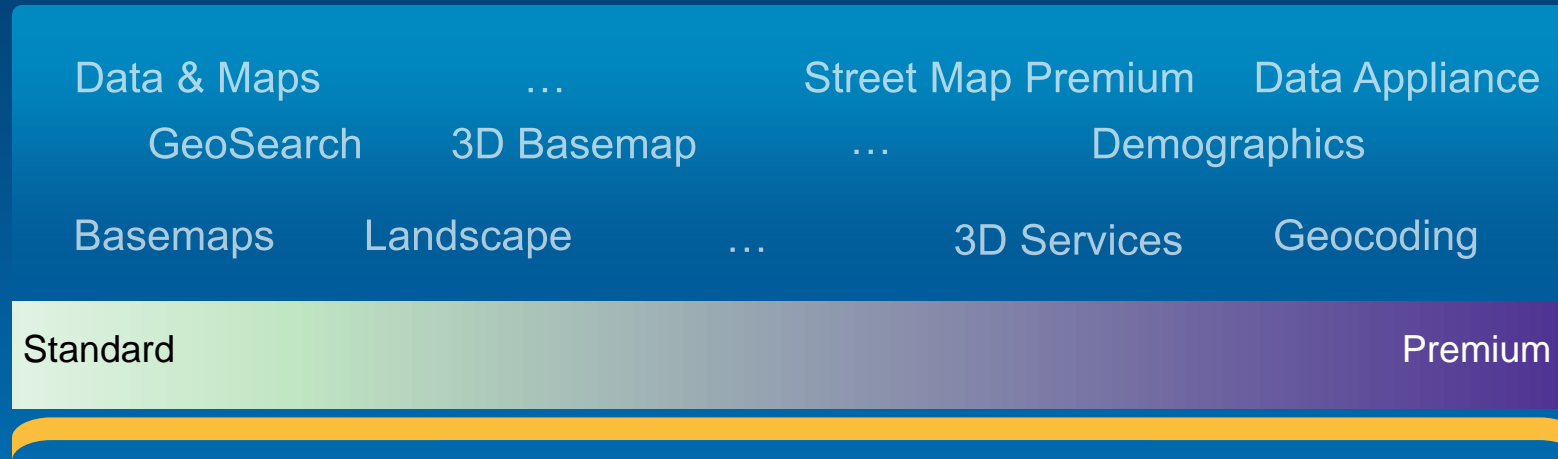
## Partners



Local / Regional Industry Specific

# Esri Builds Foundational Map Layers

Ready-to-use content and information products ...



... Built by assembling best available Content

# Accessing the Living Atlas through ArcGIS

Multiple ways to Experience the Living Atlas of the World through ArcGIS Apps

- **ArcGIS Online (ArcGIS.com)**
  - Ready-to-Use Maps feature pages
  - Gallery: Esri Featured Content
  - Add Data: Browse Esri Map Layers
- **Living Atlas of the World Web App (New!)**
  - Browse and preview maps, layers, and tools
- **Explorer for ArcGIS App (New!)**
  - Native App for iOS and Mac platforms
  - Free to use with your Org Subscription

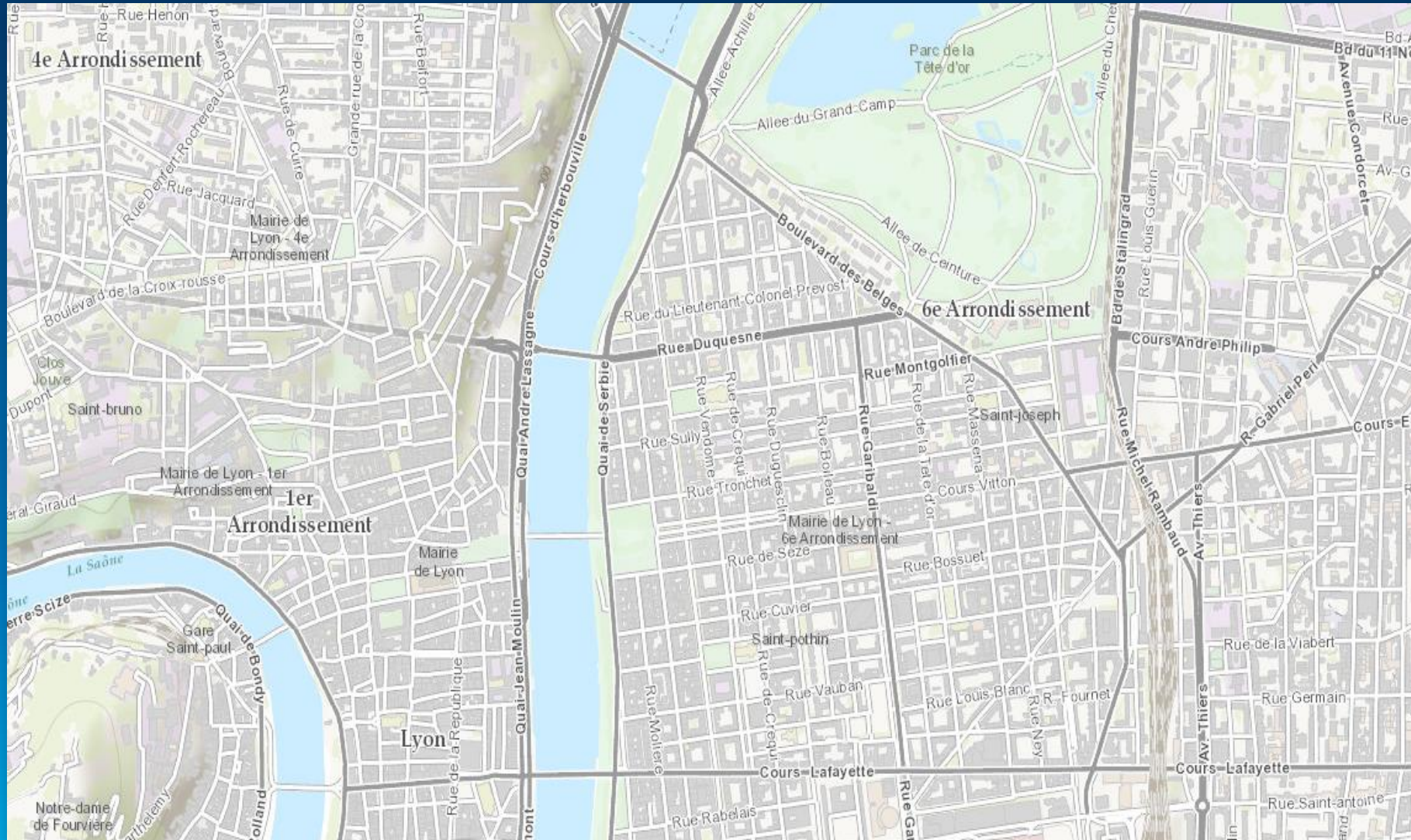


# Role of Community



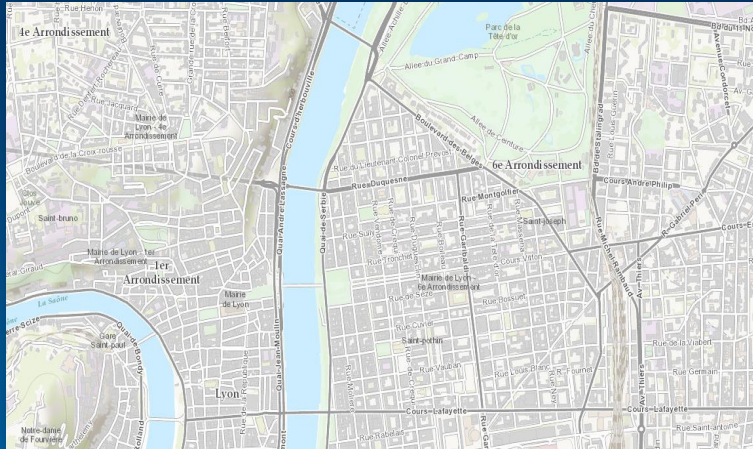


# Community Maps



Basemaps

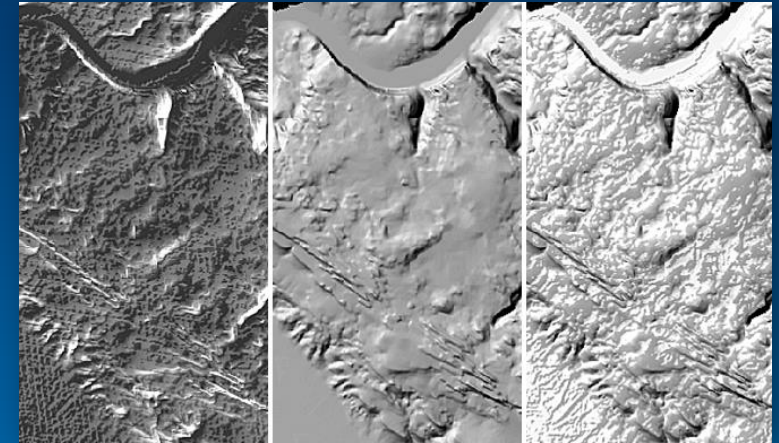
# Community *Content* goes beyond maps



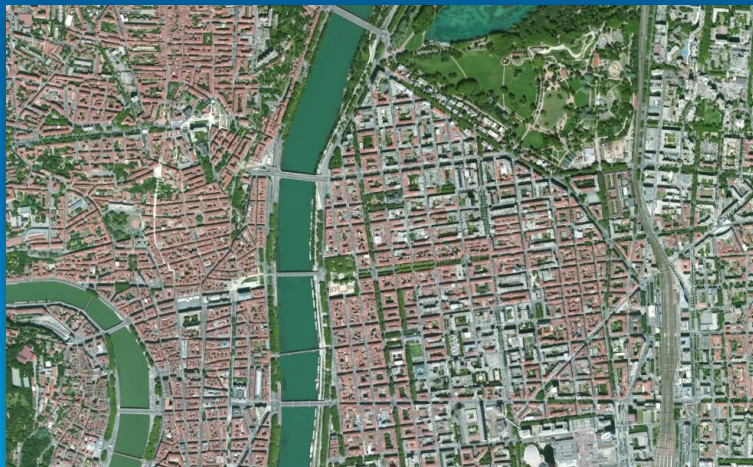
**Basemaps**



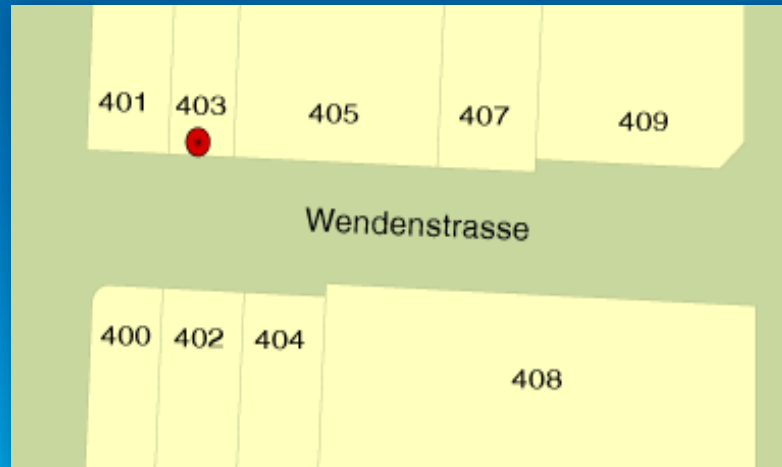
**3D**



**Elevation**



**Imagery**



**Geocoding**



**Landscape**



# Community Maps Opportunities to Contribute

- **Imagery** – Current and high resolution (1m or better)
- **Elevation** – 10 meter DEM or better (3m or better in USA)
- **Urban Observatory** – City-based themes
- **Oceans** – Bathymetry & Places
- **Hydrography** – Streams, Watersheds & Elevation
- **Demographics** – Lifestyle and Business Data
- **3D** – Buildings, Zoning, Trees, Detailed elevation
- **Basemaps** – Reference layers and features

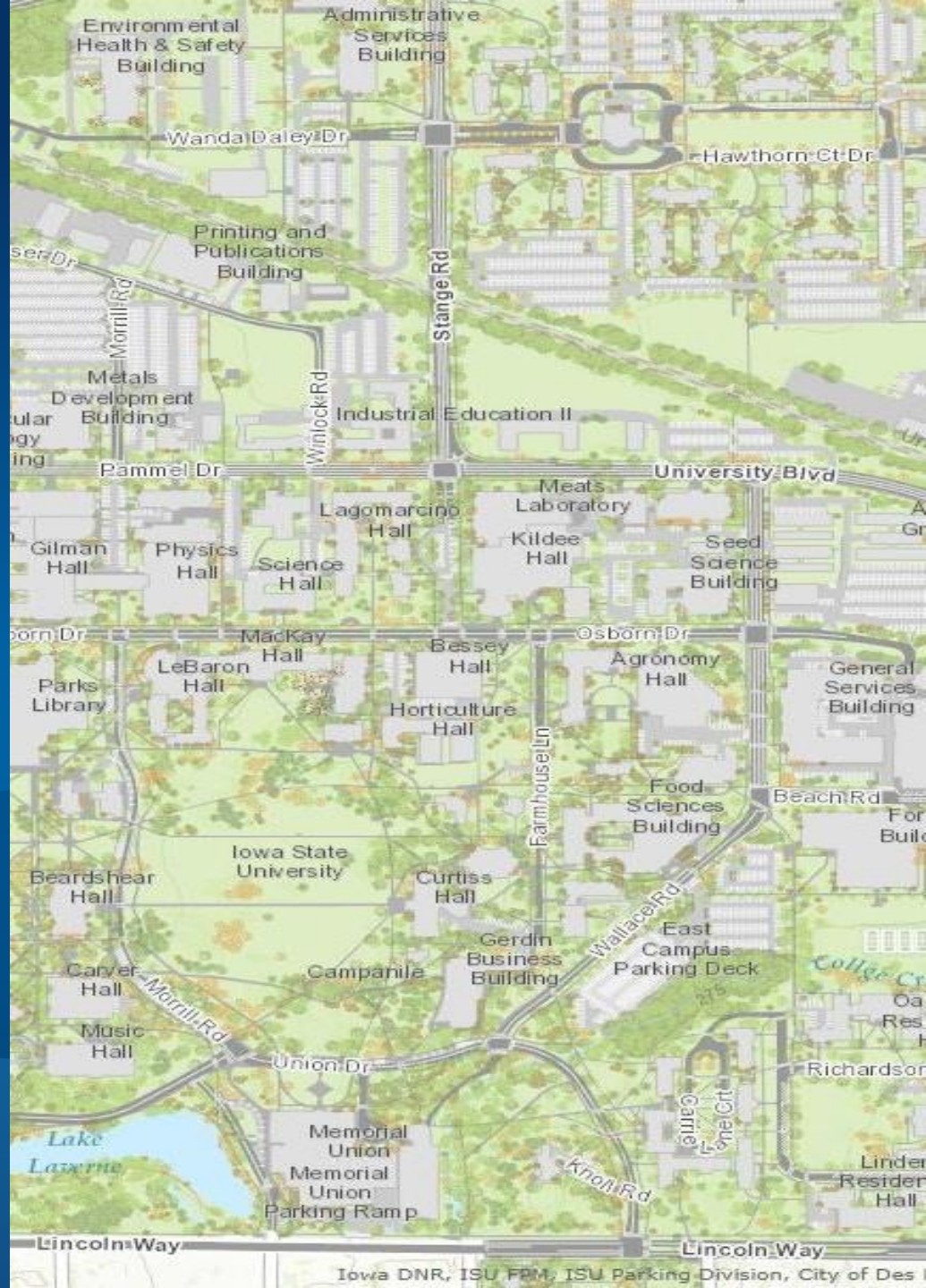
# Community Maps Benefits

- **Reach a Broad Audience with Your Data through ArcGIS Online**
- **Reliable Access to Maps with Your Data (99.9% Availability)**
  - Includes data that extends beyond your community boundaries
- **High-Quality Cartography Applied to Your Data**
- **Recognition for Contributed Content**
- **Retain Ownership to your Contribution**

Demo

# Community Maps Tour

Search “**UC2014 ECM**” on ArcGIS.com for this Map Tour



# ArcGIS Content Usage Is Growing Rapidly

Usage is being driven by high quality content from the community

*Streets: High Usage in Japan & Thailand*



*Topo: High Usage in Netherlands & UK*

*Basemap Usage Doubling Each Year*

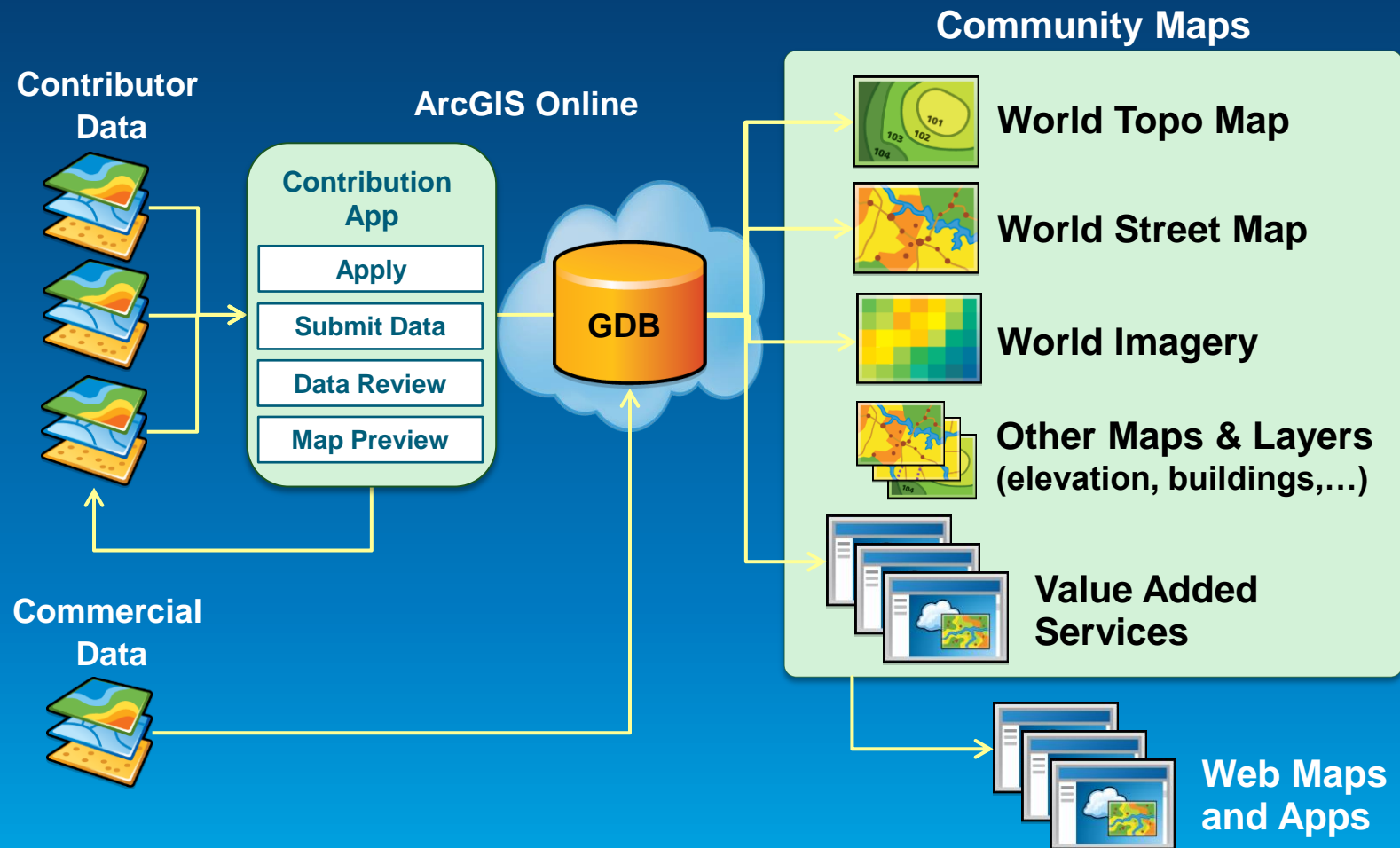
2012

14 Billion+ Requests

2013

26 Billion+ Requests

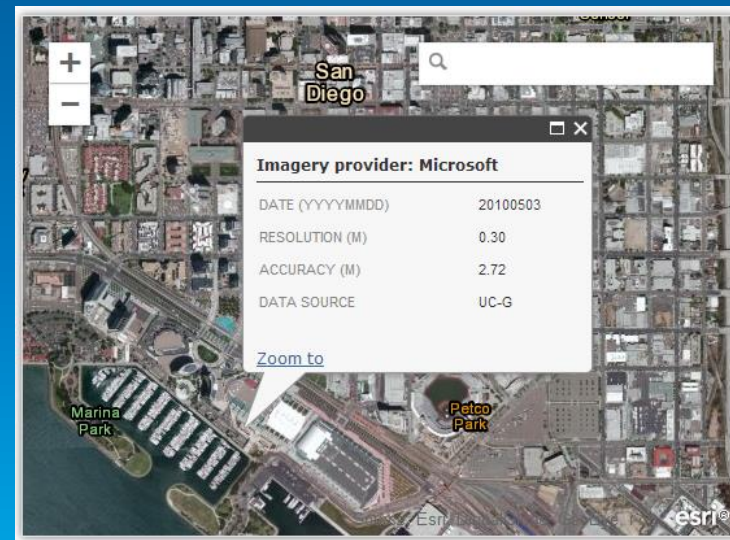
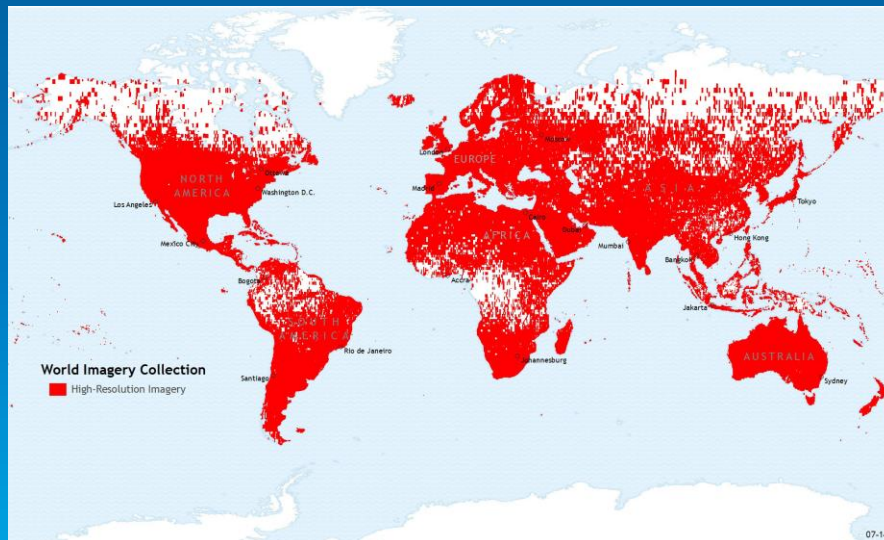
# Esri Community Maps: High-Level Architecture





# Imagery – What is Needed?

- Natural Color Imagery that is **More Recent and/or Higher Resolution** than what is currently available
  - 1m or better imagery where only 15m or 2.5m is now available
  - Get latest info for [World Imagery](http://www.arcgis.com/arcgis/home/index.html#/imagery) map on [ArcGIS.com](http://www.arcgis.com)

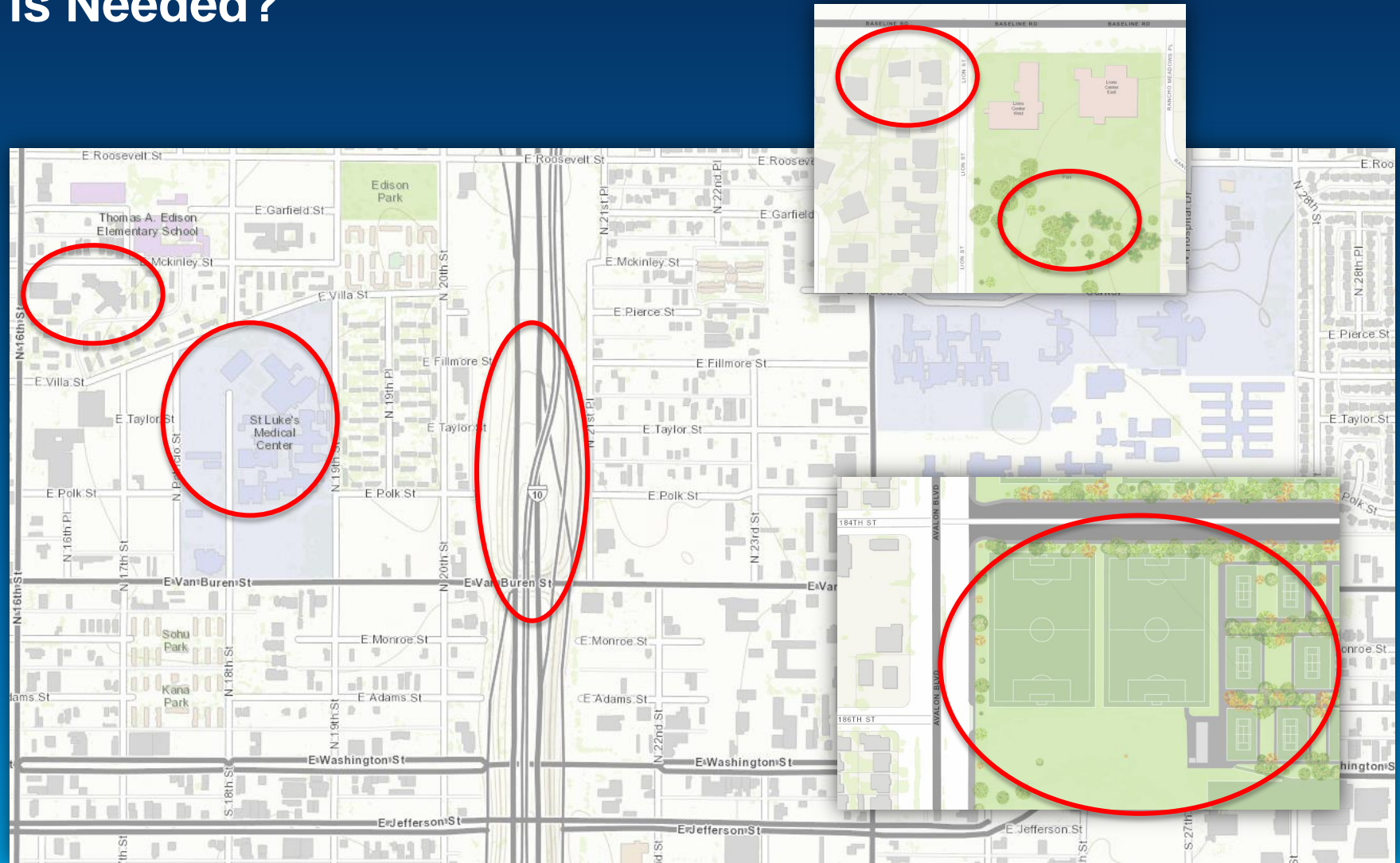


<http://www.arcgis.com/features/maps/imagery.html>

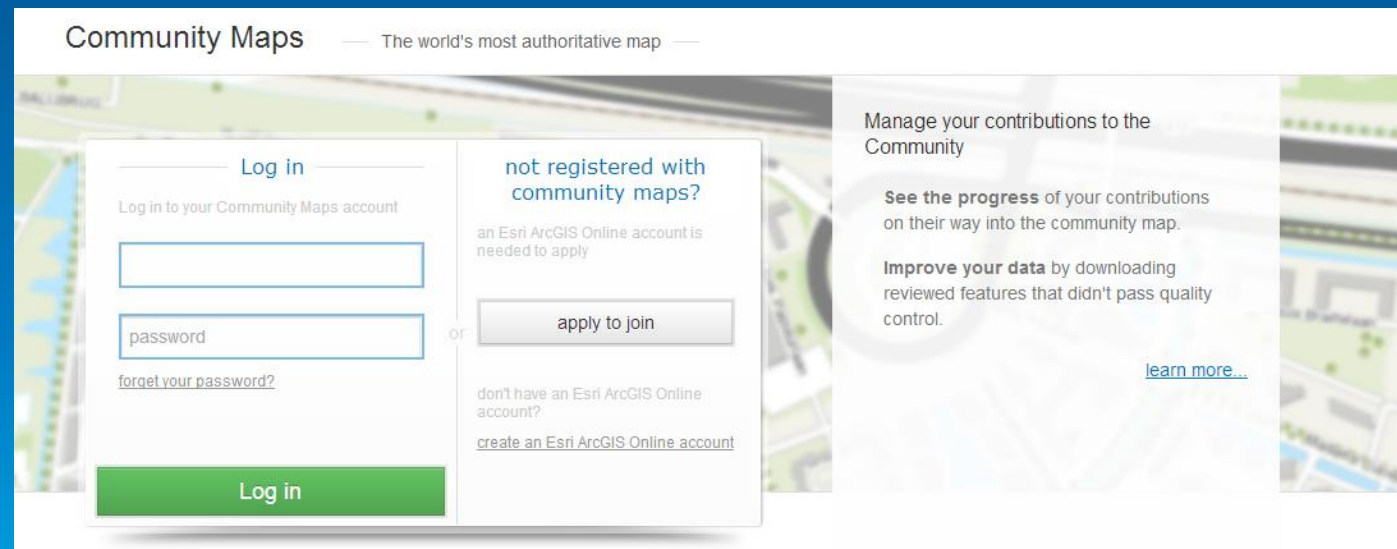
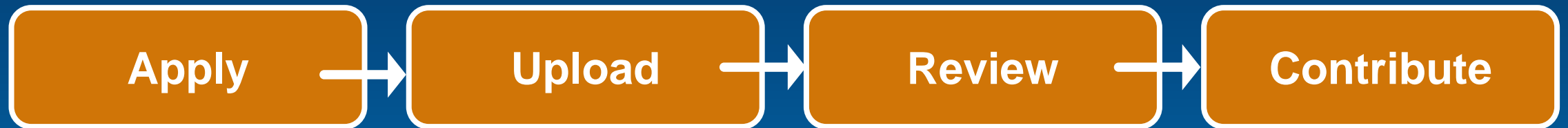
# Basemaps – What is Needed?

- **Layers Include:**

- Building Polygons
- Parcel Polygons
- Tree Points
- Land Use Polygons
  - Airports
  - Educational
  - Medical
  - Parks
- Road Lines
- Administrative Lines
- Campus Features
  - Landscape Polygons
  - Hard Surface Polygons
  - Sports Field Polygons



# Getting Started with Community Maps



[communitymaps.arcgis.com](http://communitymaps.arcgis.com)

# Top Three Community Maps Improvements

## 1. Contribution Application

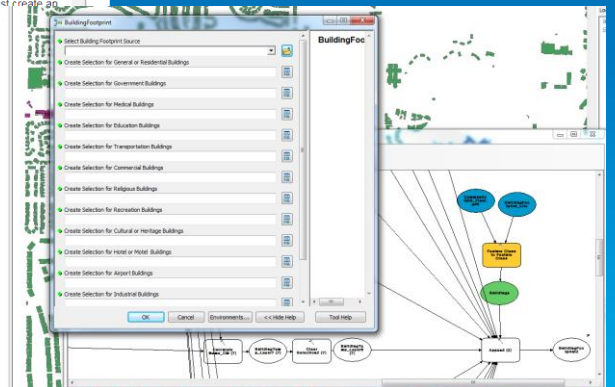
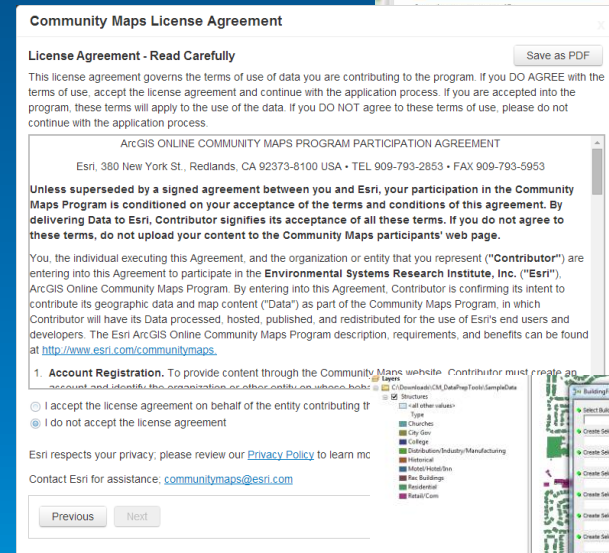
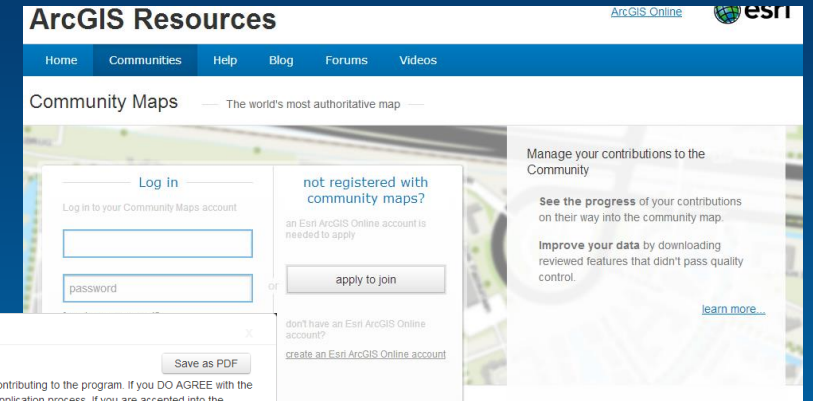
- One-Stop Shop for Community Maps Activities
- Register/ Upload/ Preview Map/ Approve/ Update

## 2. Participation Agreement

- Online Click-Thru
- Simplified Terms

## 3. Data Prep Tools

- GeoProcessing Tools for Submitting Data
- Beta



# Community Maps Contributor App

<https://communitymaps.arcgis.com>



**ArcGIS Resources**

Home Communities Help Blog Forums Videos

Community Maps — The world's most authoritative map —

**Log in**

Log in to your Community Maps account

[forget your password?](#)

**Log in**

**not registered with community maps?**

an Esri ArcGIS Online account is needed to apply

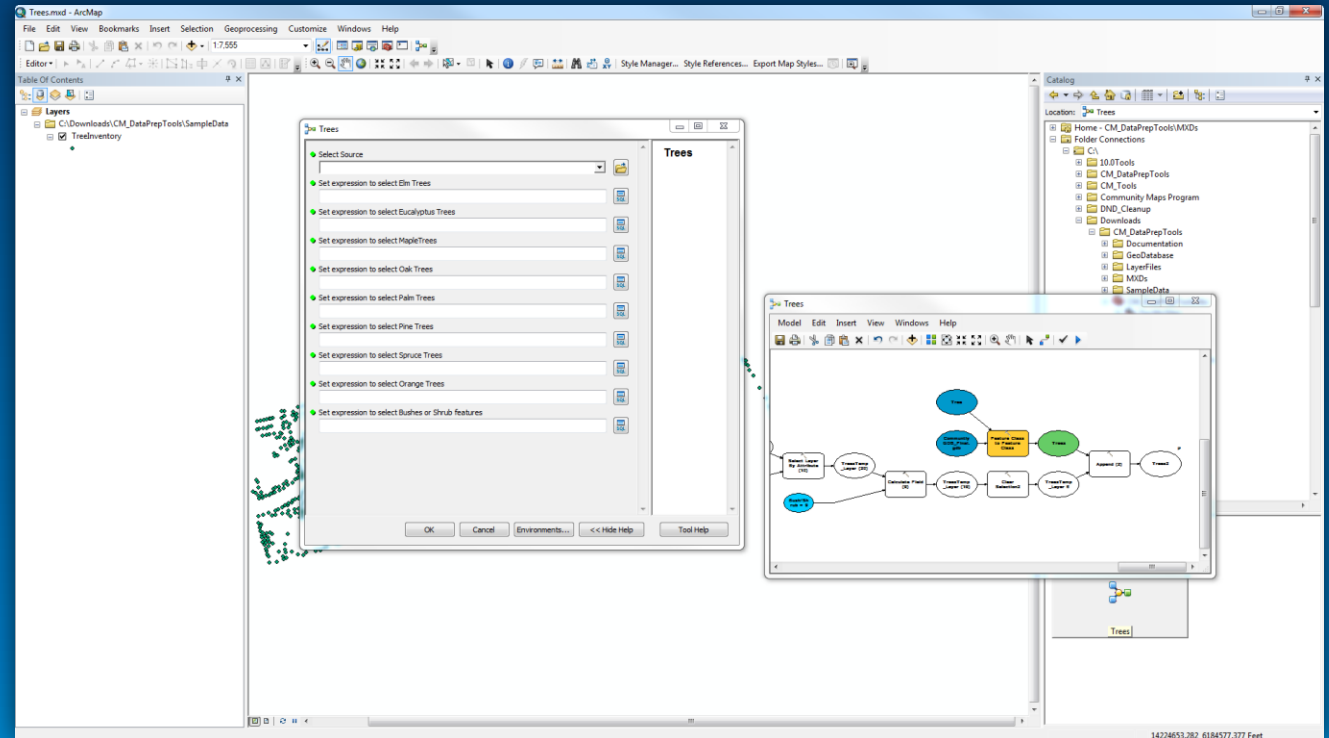
or

don't have an Esri ArcGIS Online account?

[create an Esri ArcGIS Online account](#)

# Data Preparation Tools

- Simple to Execute
- Not Data Model Centric
- A La Carte per Layer
- View layers before submission



Demo

# Contributing to Community Maps

communitymaps.arcgis.com

## ArcGIS Resources

[ArcGIS](#)

Home

Communities

Help

Blog

Forums

Videos



Who are you?



Where are you?



What would you like  
to contribute?



Ready to submit



Application submitted

### Account Info

Organization name:

Country:

Organization Type:

- Nation
- First Order (State, Province, Region)
- Second Order (County, Departments, District)
- Third Order (City)
- Other

Account Admin

Name:

Job title:

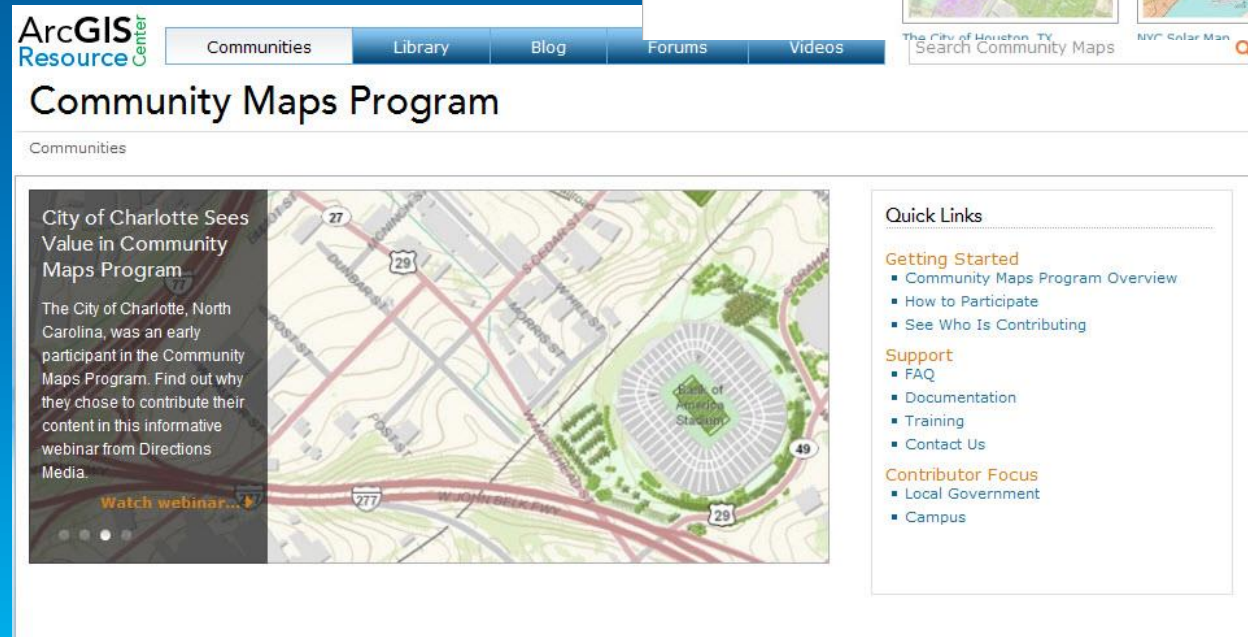
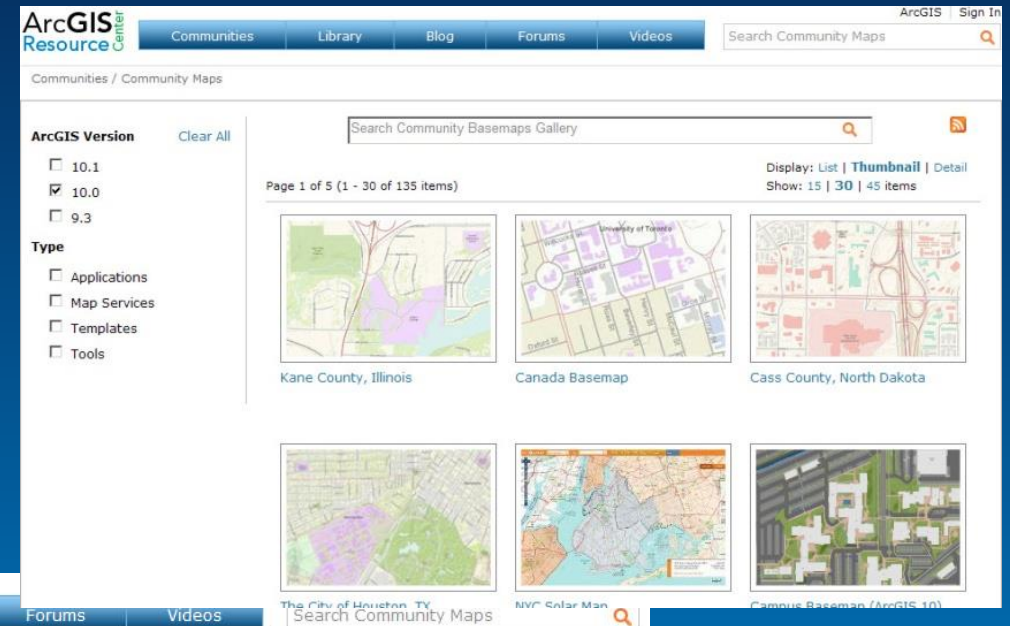
Email:

Phone:

# Community Maps Resources

Visit us at [resources.arcgis.com](http://resources.arcgis.com)

- Online Help
- Tools
- Tutorials & Video demonstrations
- Newsletters



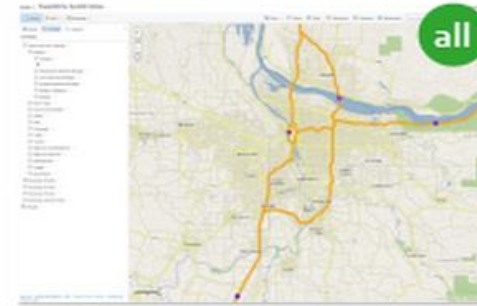


# Community Maps Webinars and Workshops (Coming Soon)

- **Monthly Community Maps Webinars (3<sup>rd</sup> Thursday of the month)**
- **Virtual Instructor-Led Workshops**
- **Using the Data Prep Tools**
- **Demos & Hands-On Exercises**



# Community Map: Our vision for the Future



TransGIS for ArcGIS Online  
By regainC\_ODOT



Yosemite National Park  
By user\_community



Chicago Topo Map  
By esri\_atlas



Hong Kong Street Map  
By user\_community



Washington, DC



Palm Desert, California

# Role of Esri's Community – Our Vision

- **Support building better Foundational Map Layers by Contributing Authoritative Content**
- **Publish Authoritative Ready to Use Maps and Layers**
- **Become the Curators of the Living Atlas of the World**

# Living Atlas Curators

## Urban Systems

- Brian S
- Jim H

## Landscape

- Peter A
- Sean B

## Imagery

- Daniel S
- Vinay V

## Earth Observation

- Daniel S

## Demographics

- Cathy S
- Nuno R

## Basemaps

- Andrew G

## Transportation

- Wolfgang H
- Sean B

## Story Maps

- Jon B

## New Theme

- You ! The domain expert

## Other Theme

- Domain Expert seating next to you

# Join the ArcGIS Content Community

<http://bit.ly/ContentCommunity>

The screenshot displays the Esri GeoNet website interface. At the top, the Esri logo is on the left, and navigation links for 'Industries', 'Products', 'Support & Services', and 'About' are in the center. A search bar is on the right. Below the header, the 'GeoNet' logo and 'The Esri Community' tagline are prominent. A secondary navigation bar includes 'Home', 'Content', 'People', 'Places', and 'GeoNet Help'. The main content area features a 'Global Content' banner with a background of orange pipes. Below the banner, there are tabs for 'Activity', 'Content', 'People', 'Reports', and 'Calendar'. The 'Activity' tab is selected, showing a post by 'esri' with the text 'What's going on?'. To the right, there are sections for 'FEATURED CONTENT' (listing PDFs like 'Content Track - UC 2014.pdf'), 'POPULAR CONTENT' (listing 'Football or Soccer?'), and 'TOP PARTICIPANTS'. A comment by 'Christina Sullivan' is visible under the main post.

# 2014 Content Track

- Thursday
  - Esri Global Demographic and Lifestyle Data  
8:30 am - Room 17 A
  - Content for ArcGIS: The Road Ahead  
10:15 am - Ballroom 06 F
  - ArcGIS Online: Premium Content Services  
1:30 pm - Room 31 C
  - ArcGIS for 3D Cities: An Introduction  
3:15 pm – 4:30 pm – Room 31 C

# 2014 Content Track

- Friday

- ArcGIS for 3D Cities: An Introduction

- 9:00 am – 10:15 am – Room 04

- ArcGIS Online: An Introduction to the Living Atlas of the World

- 9:00 am - Room 05 A

- Using the Landscape Analysis Data – Tech Workshop

- 9:00 am - Room 10

**Thank you...**

- **Please fill out the session survey:**

**First Offering ID: 1336**

**Second Offering ID: 1416**

**Online – [www.esri.com/ucsessionsurveys](http://www.esri.com/ucsessionsurveys)**

**Paper – pick up and put in drop box**



# Frequently Asked Questions

- **Can provider build web apps using online map?**
  - Yes, the maps and developer APIs are freely available to contributor and users.
- **Is Esri generating revenue from use of our data?**
  - No, maps built with community data are freely available to ArcGIS users.
- **Will the maps be updated to maintain its currency?**
  - Yes, contributor can update the data when it chooses.
  - Esri encourages contributors to update at least annually.

## Frequently Asked Questions (continued)

- **Who owns the data that is contributed through the community maps program?**
  - The data provider retains all ownership of data. ESRI requests permission to publish maps and value added services with the data.
- **Will the map and other services be reliable?**
  - Yes, maps and services are hosted in commercial data centers with 24/7 support and 99.9% availability.



Understanding our world.