

copyright swisstopo

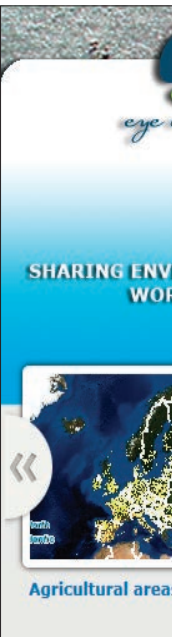
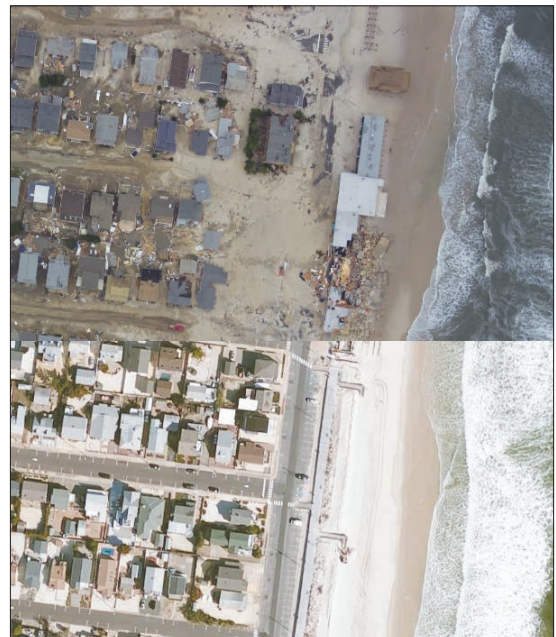
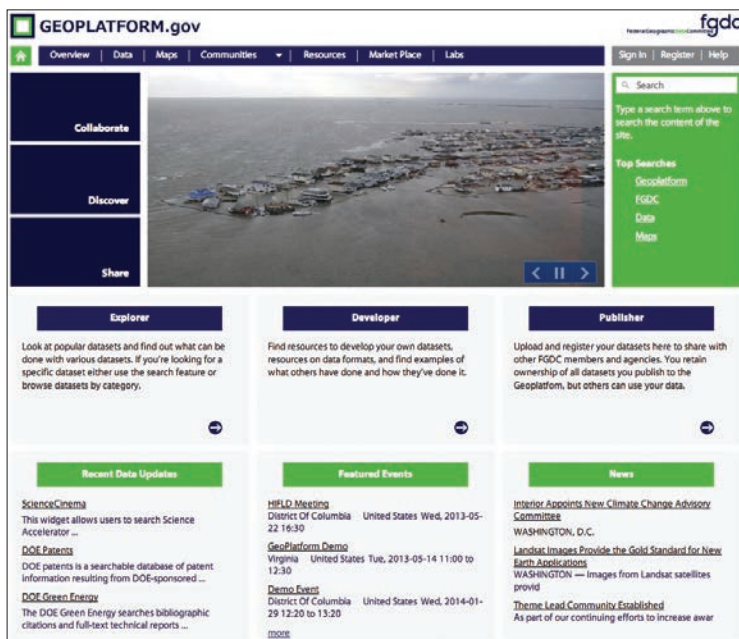
# ArcGIS® for National GIS Data Sharing



# ArcGIS® for National GIS Data Sharing

Spatial data supports better decision making for complex social, economic, environmental, and security concerns of national interest. The more information that can be accessed and analyzed, the more effective nations, organizations, agencies, and citizens can be in finding solutions and taking action. Using geography as the common denominator to integrate large volumes of data can be the key to defining, prioritizing, and addressing many important issues.

Using the ArcGIS® platform to discover, share, and create knowledge from all available information allows everyone the ability to collaborate to address issues. This is the power of ArcGIS.



## Reduce | Reuse | Recycle

Save money and start sharing solutions. ArcGIS provides a common platform for people to collaborate using one interactive, intelligent map. Eliminate redundant datasets, maps, apps, and tools by using the ArcGIS platform to create, serve, and share data.

## Your Data—Secure

Esri provides a way to store, manage, discover, and share data while it remains in a secure environment. You determine what information is provided to users within or outside your organization. In the cloud or on-premises, your information can be shared with ease and peace of mind.

For more information,  
visit [esri.com/datasharing](http://esri.com/datasharing).



GIS allows national mapping organizations to share authoritative data with other nations, organizations and the public, like these solutions from the United States, European Environment Agency; and Queensland, New Zealand.

## Share Knowledge—Repeat

Intelligent web maps create a unique way of visualizing complex information. They help you mash up seemingly unrelated information, reveal unseen patterns, mine big datasets, and repeatedly apply models. Data can be authored on the desktop, sent to the cloud, and shared using ArcGIS<sup>SM</sup> Online. Sharing is easy.

## Solve National Issues

Map-based location information is one of the greatest means to change our dialog and help us work together. Sharing information across national government and among local citizens provides a platform for positive change to the issues we face.



Understanding our world.

Esri inspires and enables people to positively impact their future through a deeper, geographic understanding of the changing world around them.

Governments, industry leaders, academics, and nongovernmental organizations trust us to connect them with the analytic knowledge they need to make the critical decisions that shape the planet. For more than 40 years, Esri has cultivated collaborative relationships with partners who share our commitment to solving earth's most pressing challenges with geographic expertise and rational resolve. Today, we believe that geography is at the heart of a more resilient and sustainable future. Creating responsible products and solutions drives our passion for improving quality of life everywhere.



## Contact Esri

380 New York Street  
Redlands, California 92373-8100 USA

1 800 447 9778  
T 909 793 2853  
F 909 793 5953  
info@esri.com  
[esri.com](http://esri.com)

Offices worldwide  
[esri.com/locations](http://esri.com/locations)

Copyright © 2013 Esri. All rights reserved. Esri, the Esri globe logo, ArcGIS, @esri.com, and esri.com are trademarks, service marks, or registered marks of Esri in the United States, the European Community, or certain other jurisdictions. Other companies and products or services mentioned herein may be trademarks, service marks, or registered marks of their respective mark owners.