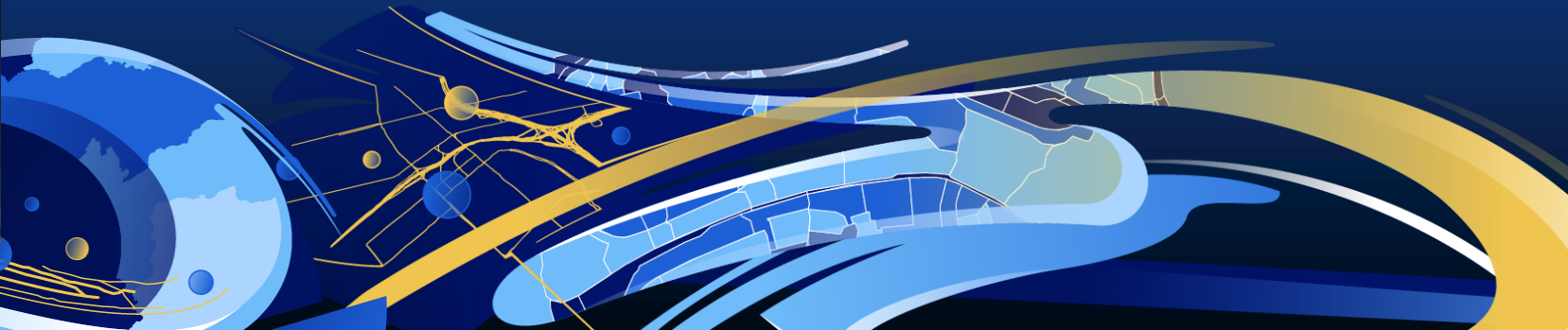




Let's COGO

Edit using measurements



Product Announcements

ArcGIS Pro

- **3.1 – Released February 23, 2023**
- **3.1.1 – Patch Released April 6, 2023**
 - **BUG-000153703 - High Random Access Memory (RAM) consumption and slow performance in ArcGIS Pro when working with a feature service.**
 - **Export ArcMap Traverse File**
 - **Duplicate Parcels**

Enterprise

- **11.1 – Released April 20, 2023**

ArcGIS Enterprise release	ArcGIS Pro releases	Parcel fabric version
10.7.1	2.4 (deprecated)	1 (deprecated)
10.8	2.5	2
10.8.1	2.6	3
10.9	2.7, 2.8	4
10.9.1	2.9, 3.0, 3.1	5
11.0	3.0, 3.1	5
11.1	3.1	5

Product Announcements

Parcel Fabric Team at the UC 2023

ArcGIS Parcel Fabric: Migrating and Administering Parcels

Event: 2023 Esri User Conference

Learn about the parcel fabric information model and how it can be extended. This session will cover both data migration from simple feature classes as well as the upgrade process from the parcel fabric for ArcMap. Once your parcels are in the parcel fabric learn how to configure it in your organization: single user and enterprise deployments, editing map configuration, tasks for parcel workflows, topology rules and attribute rules. Once properly configured learn how to publish the map for multiuser editing and for viewing purposes.

Session Type: Technical Workshop

Topic: Data Management

Session Level: Beginner

[ADD TO SCHEDULE](#) **Tuesday, Jul 11 | 8:30 AM - 9:30 AM PDT (10:30 AM - 11:30 AM CDT)**

[ADD TO SCHEDULE](#) **Thursday, Jul 13 | 4:00 PM - 5:00 PM PDT (6:00 PM - 7:00 PM CDT)**

ArcGIS Parcel Fabric: Introduction to Record Driven Workflows

Event: 2023 Esri User Conference

Learn about editing the parcel fabric in ArcGIS Pro using common, record-driven parcel editing workflows. Record-driven workflows will include demos of parcel creation, editing and lineage management based on a variety of legal descriptions. Example workflows will include parcel merge, parcel split (metes-and-bounds), parcel split (area description), parcel boundary line adjustment and creating new parcels from CAD files. The session will end with topics on advanced capabilities workflow automation, 3D cadastre and coordinate-based cadastre.

Session Type: Technical Workshop

Topic: Data Management

Session Level: Beginner

[ADD TO SCHEDULE](#) **Wednesday, Jul 12 | 2:30 PM - 3:30 PM PDT (4:30 PM - 5:30 PM CDT)**

[ADD TO SCHEDULE](#) **Thursday, Jul 13 | 10:00 AM - 11:00 AM PDT (12:00 PM - 1:00 PM CDT)**

ArcGIS Parcel Fabric: Introduction to Quality Driven Workflows

Event: 2023 Esri User Conference

Learn about managing data quality in the parcel fabric in ArcGIS Pro. Learn how to use attribute rules and topology rules to evaluate data quality in your parcel fabric and meet data quality requirements for your organization. The session will include common quality-driven workflows for fixing topological errors, geometry errors and attribute errors. The session will also introduce Least-Squares Adjustment capabilities to detect outliers in measurements, evaluate and improve spatial accuracy.

Session Type: Technical Workshop

Topic: Data Management

Session Level: Beginner

[ADD TO SCHEDULE](#) **Wednesday, Jul 12 | 2:30 PM - 3:30 PM PDT (4:30 PM - 5:30 PM CDT)**

[ADD TO SCHEDULE](#) **Thursday, Jul 13 | 1:00 PM - 2:00 PM PDT (3:00 PM - 4:00 PM CDT)**

ArcGIS Parcel Fabric: Data Management

Event: 2023 Esri User Conference

This session will consist of short and useful data management demos: How to share a subset of parcel data as a live services that is 'view-only' using a database view; how to access the parcel fabric logging in the ArcGIS Pro client and on the ArcGIS Server to better understand performance issues; how to import points from a CSV or TXT file and how to automate data import using Python.

Session Type: Demo Theater Presentation

Topic: Data Management

Session Level: Intermediate

[ADD TO SCHEDULE](#) **Thursday, Jul 13 | 10:00 AM - 10:45 AM PDT (12:00 PM - 12:45 PM CDT)**

Land Records SIG: Parcel Management

Event: 2023 Esri User Conference

Join us for our annual Land Records face-to-face Meetup. In our traditional style, our Land Records will present what's new in a new way! Calling all parcel and cadastral folks. Calling all recorders, surveyors and assessors. If you've got parcels, attend and bring your questions! Don't be late, the lunches will be gone! See you there!

Session Type: Special Interest Group Meeting

Session Level: All Attendees

[ADD TO SCHEDULE](#) **Wednesday, Jul 12 | 11:30 AM - 12:30 PM PDT (1:30 PM - 2:30 PM CDT)**

Product Announcements

TUE, MAY 16, 2023, 11:00 AM CDT

Let's COGO! (edit using measurements)



🗂️ Online event

Registration URL

<https://attendee.gotowebinar.com/register/229608637311852120>

Webinar ID 374-443-579...



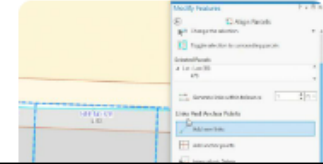
22 attendees

Manage ▾

🟢 Going

TUE, JUN 13, 2023, 11:00 AM CDT

Parcel Alignment



🗂️ Online event

Registration URL

<https://attendee.gotowebinar.com/register/147-352-067...>

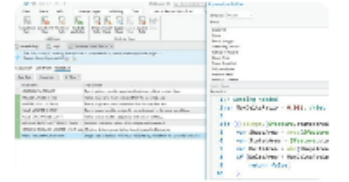
Webinar ID 147-352-067...



27 attendees

TUE, NOV 14, 2023, 11:00 AM CST

The use of Arcade with the Parcel fabric



🗂️ Online event

Registration URL

<https://attendee.gotowebinar.com/register/8319078029162098778>

Webinar ID 984-184-195...



17 attendees

Manage ▾

🟢 Going

Parcel Fabric Meetup

And the Survey says.....



How do you use CAD?

Source information for parcels originates in many different forms. Sometimes the boundary descriptions are described in a deed. Sometimes the information is provide as a Computer-aided Design (CAD) drawing file.

Please take a few minutes to answer a few short questions on your interaction with CAD data.

Do you use CAD software in your organization to maintain Parcels?*

Yes

No

Not sure

Does your organization receive CAD drawings?*

Are CAD drawing part of a submission process that becomes the source for parcel updates?

Yes

No

Not Sure

Submit

Why this session?

- **Highly requested**
- **We often get questions about it**
- **This is a 'deep dive':**
 - **Plenty of time (2 hours allocated)**
 - **Interact: ask as many questions as you want**
 - **Interact: provide your own tips**



Agenda

- **What makes a line 'COGO Enabled'**
- **Project Units**
- **Entering a Traverse**
- **Migrating COGO from ArcMap to the new COGO schema**
- **COGO Labeling and display expression (Arcade)**
- **Ground to grid correction**
- **Entering station offset measurements**
- **Additional direction types (geodetic, loxodrome...)**
- **Editing 'On Screen Constraints', Inference**
- **Update COGO**
- **Quality Assurance**





Demos

Let's COGO

COGO-Enabled Lines

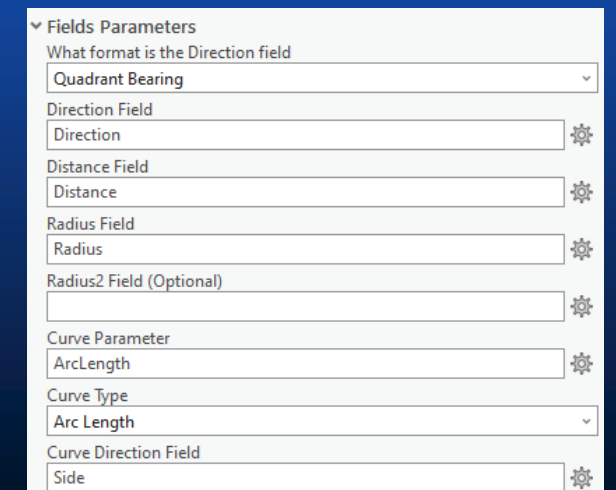
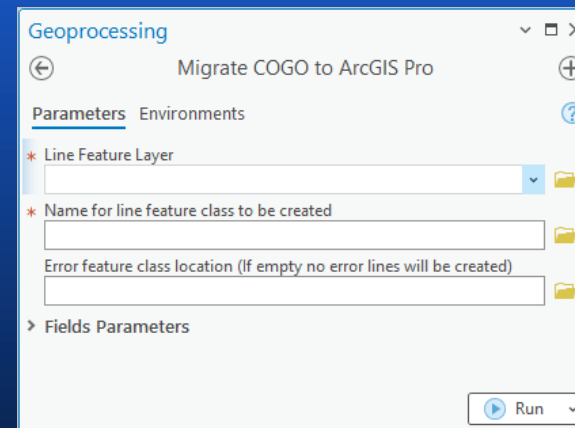
- Enable COGO Geoprocessing tool
- Lines have COGO fields to store COGO dimensions
 - **Direction, Distance, Radius, Arclength, Radius2**
- COGO-enabled Arcade label expression, symbology
- Parcel fabric lines are automatically COGO-Enabled
- Use the 2-point line tool

Upgrade ArcMap COGO To Pro

- ArcMap COGO used TEXT values to represent COGO dimensions
- Upgrade creates a new feature class
- Converts TEXT to DOUBLE for all fields
- Optionally create an Error Feature class to show features that failed to convert
- Field mapping available if ArcMap field names don't match Pro

- **Links:**

- [Blog Post](#)
- [GP Script Toolbox](#)



Parcel Fabric Lines Label Expression

- Utilizes Arcade
- Fully configurable
- Easy to access settings
- Direction Type
- COGO Type: Entered, \pm Computed, <From Geometry>
- Full color formatting
- Prefix strings
- Decimal rounding
- COGO Right, COGO Left, Shared
- GP: Set Parcel Line Label Position

Label Class - Parcels_Lines
COGO Right

Class Symbol Position

Language: Arcade
Title: COGORight

Fields	Functions
OBJECTID	Abs()
GlobalID	Acos()
Created By Record	Angle()
Retired By Record	Area()
Direction	AreaGeodetic()

Expression

```
// Change the settings portion to configure direction
// format, color, rounding and abbreviations
// This is an Arcade expression

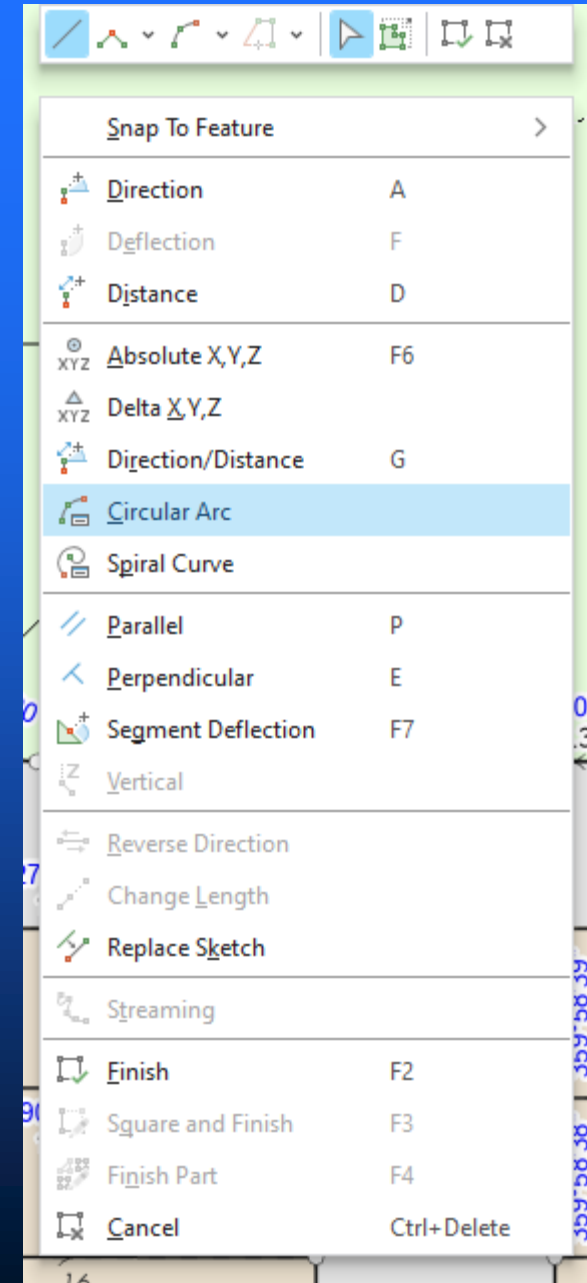
// SETTINGS
var ShowDistance = true; //set as 'true' to show
// distance
var ShowDirection = true; //set as 'true' to show
// direction
var DirectionType = 1; // 1 = Quadrant Bearing; 2 =
```

Insert fields with coded value description function
 Remove extra spaces
 Remove extra line breaks
[Learn more about label expressions](#)

Apply Cancel






Editing Constraint Tools

- Direction [**A**]
- Distance [**D**]
- Direction/Distance [**G**]
- Deflection Angle [**F**] ([help doc](#))
- On-Screen Constraints ([help doc](#))
- Inference Constraints ([help doc](#))
- Edit vertices → Reverse Direction
- Circular Curves



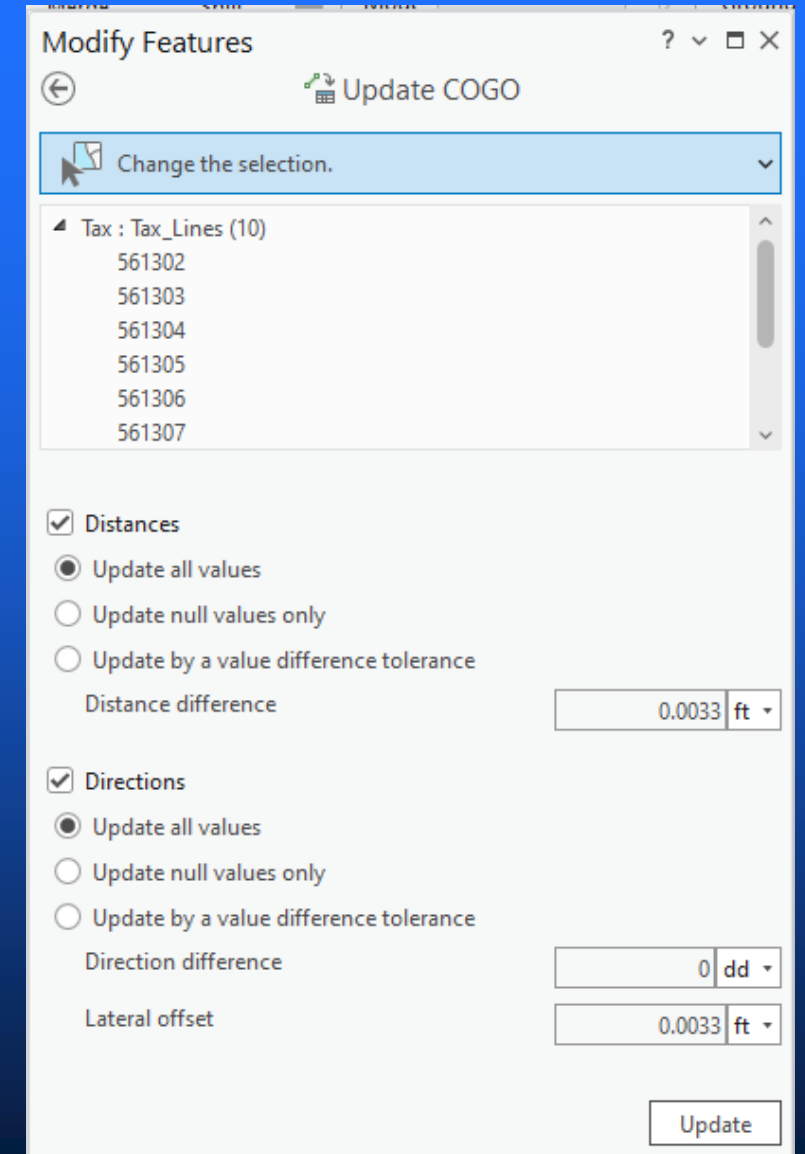
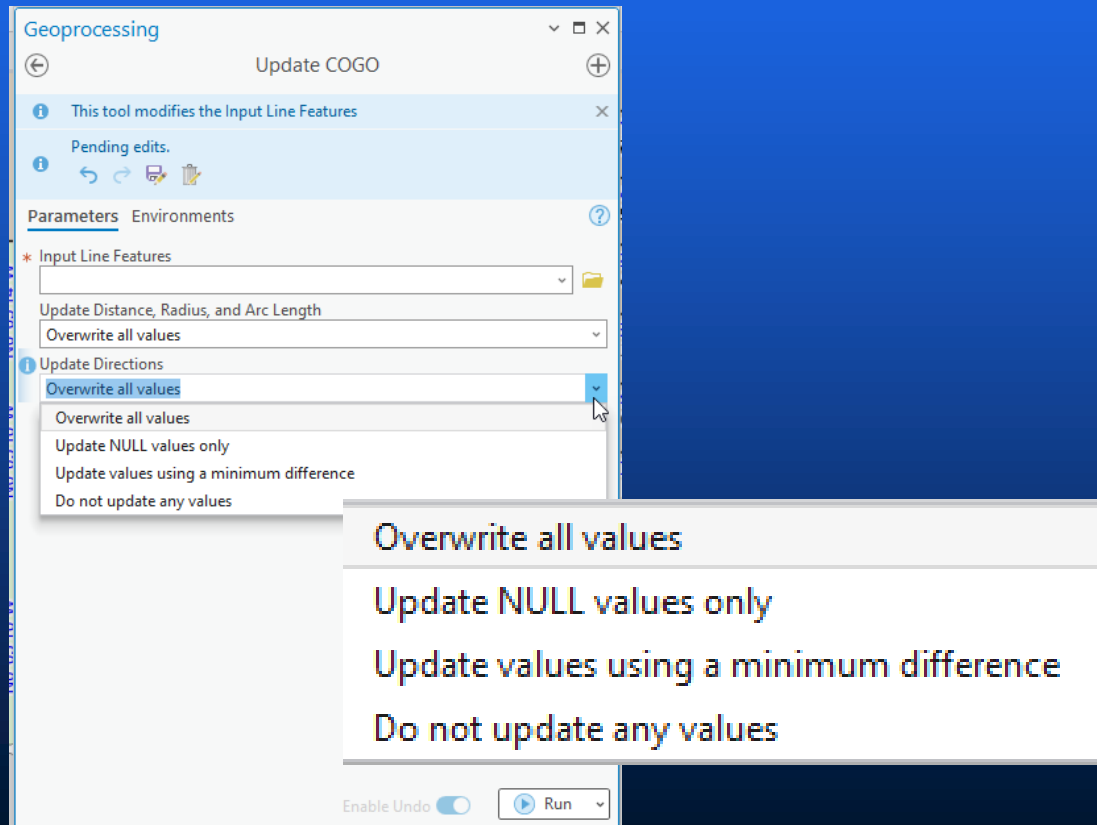
Editing Intersection Tools

- [Help doc](#)

Tool	Description	Ground to grid distance factor	Ground to grid direction offset
Distance Distance 	Create a point or vertex where two distances intersect	✓	✓
Direction Distance 	Create a point or vertex where a direction and a distance intersect	✓	✓
Direction Direction 	Create a point or vertex where two directions intersect	✓	✓
Intersection 	Create a point or vertex at an inferred intersection		
Midpoint 	Create a point or vertex at the midpoint of two locations		

Update COGO

- Editing tool ([help doc](#))
- Geoprocessing tool ([help doc](#))





How do I get started?

- Contact your esri account manager
- Watch the videos on GeoNet
- Read the Parcel Fabric help documentation
- Prototype or Proof of concept with a partial migration or upgrade
- Missing something? Let us know through the ArcGIS Parcel Fabric Ideas Page.



Dan Stone – dstone@esri.com



esri

**THE
SCIENCE
OF
WHERE**