

What's New in ArcGIS Survey123 (December 2022)



While we wait for people to join, open the survey link in the chat or scan the QR code. Let us know from where you are connecting!



Get answers: Questions will be answered at the end. You can submit them at anytime through the chat.



On-demand: The session is being recorded. We will post the recording shortly after the webinar in Esri Community



Contact us: For post webinar questions please post a comment in the Esri Community

What's New in ArcGIS Survey123 (December 2022)



Christie Roland
Product Marketer



Ismael Chivite
Senior Product Manager



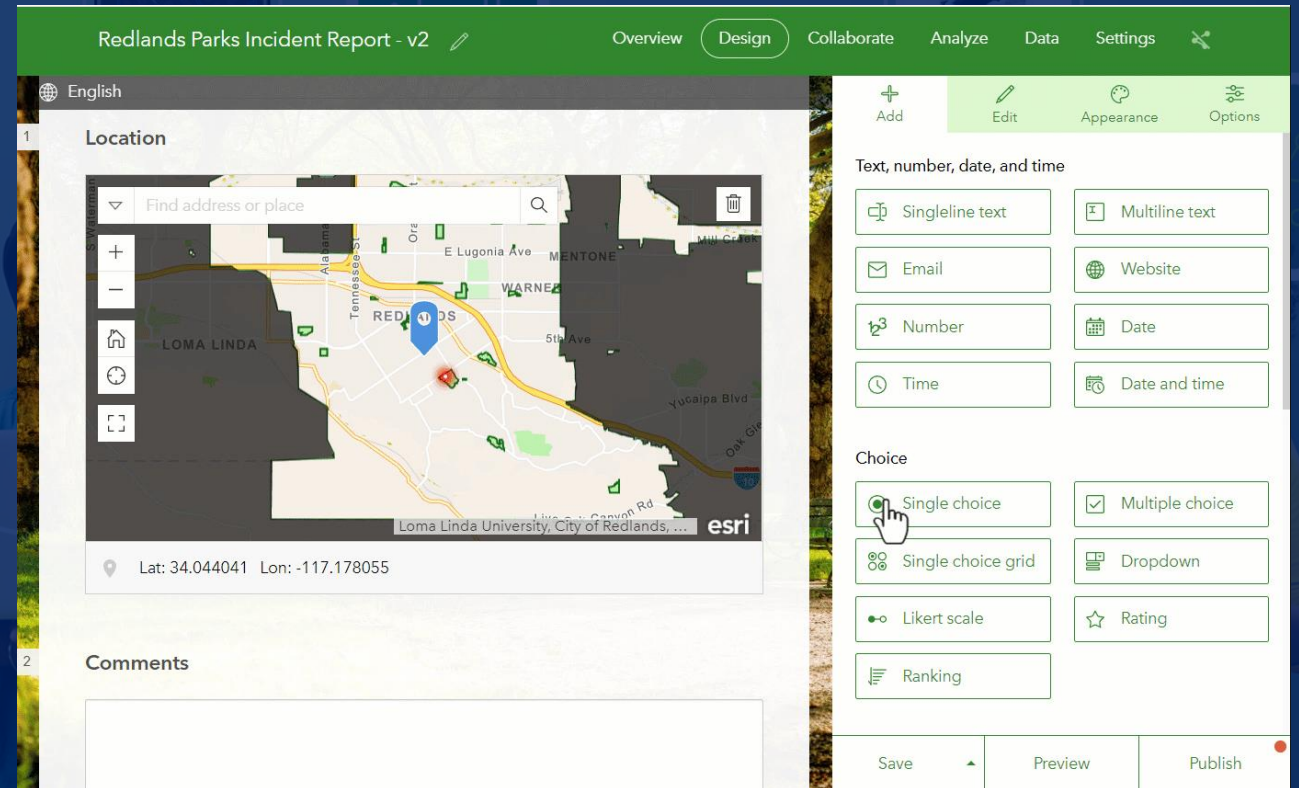
Zach Sutherby
Product Engineer

Agenda

- Introduction
- What's new in Survey123 web designer
- What's new in Survey123 Connect
- Survey123 templates
- Road Map
- Learn more, Q&A

What's new in the Survey123 web designer

- Better calculations
- Multilingual survey authoring
- Audio question type
- CAPTCHA



The Survey123 web designer helps you visually build location-aware forms for the web and the Survey123 mobile app

Agenda

- Introduction
- What's new in Survey123 web designer
- **What's new in Survey123 Connect**
- Survey123 templates
- Road Map
- Learn more, Q&A

Enhanced publishing

- Having choice lists that don't match your feature service domain is a problem
- Domain and field alias changes can now be applied on republish
- New table indicates differences

Resource: [Update a survey documentation](#)

[What's New in Survey123 Connect \(October 2022\) \(Esri Community Blog\)](#)

Warning: This survey has already been published.

This survey contains choices that are not found in the existing feature service.

Choices not found in feature service domain: 1

Add or update the following domain values when publishing

Layer/Table	Field	Action	Code	Existing Label	Updated Label
MH_Repub...	material	Add	TCB		Tungsten

[Learn more](#)

Survey123 managed feature services

- Will add new fields (no change)
- Will update field aliases
- Will update domains

Change in XLSForm choices tab	Change in feature layer domain list on republish
Choice added	New domain entry added
Choice label updated	Domain label updated
Choice name updated	New domain entry added*
Choice deleted	No change to domain

Survey123 managed feature service republish matrix

Survey change	Suggestion	Publish Status
Question added	Add field to feature service	Required ❌
Question deleted	Nothing	NA ✅
Question label / bind::esri:fieldAlias modified	Update field alias	Optional ✅
Choice list modified	Domain list modified	Optional ✅

Submission URL republish matrix

Survey change	Publish Status	Suggestion
Question added	✗ prevents republish	Add the field to the feature service
Question deleted	✓	NA
Question label / bind::esri:fieldAlias modified	✓	Manually update field alias if desired
Choice list modified	✓	Manually update domains to match choice list

Warning: This survey has already been published.

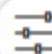
This survey contains question labels that are not consistent with the corresponding field aliases found in the existing feature service.

Fields alias updates: 1

Update the following field aliases when publishing

Layer/Table	Field	Existing Alias	Updated Alias
Manhole_Repub...	material	Matral	Material

[Learn more](#)

 Options

Next >

 Cancel

Demo

Automate updating your XLSForm template

- XLSForm template changes
 - New features added
 - Existing features improved
 - Improving data validation
- Traditionally would need to manually copy and paste your survey design from existing template to latest template
- 3.16 provides a tool to automatically update your XLSForm template to the latest version
- Creates a backup of your existing XLSForm before performing the update
- Considerations:
 - Custom cell style
 - Multiple language surveys will remove default language columns (ex. label::language(xx))

	A	B	C	D	E	
1	type	name	label	hint	constraint	constr
2						
3	note		Use this form to request support from your local community or offer to help			
4						
5	text	submitter_name	Name			
6	geopoint	location	Location	Let us know where you live so we can match you with		
7	integer	household_pax	Number of people in your household			
8	text	email_address	Email		regex(.,'^([^\<>()\\]W...:;@*]'	Please en address
9	text	phone_cell	Phone number (cell)			
10	text	phone_home	Phone number (home)			
11						

Demo

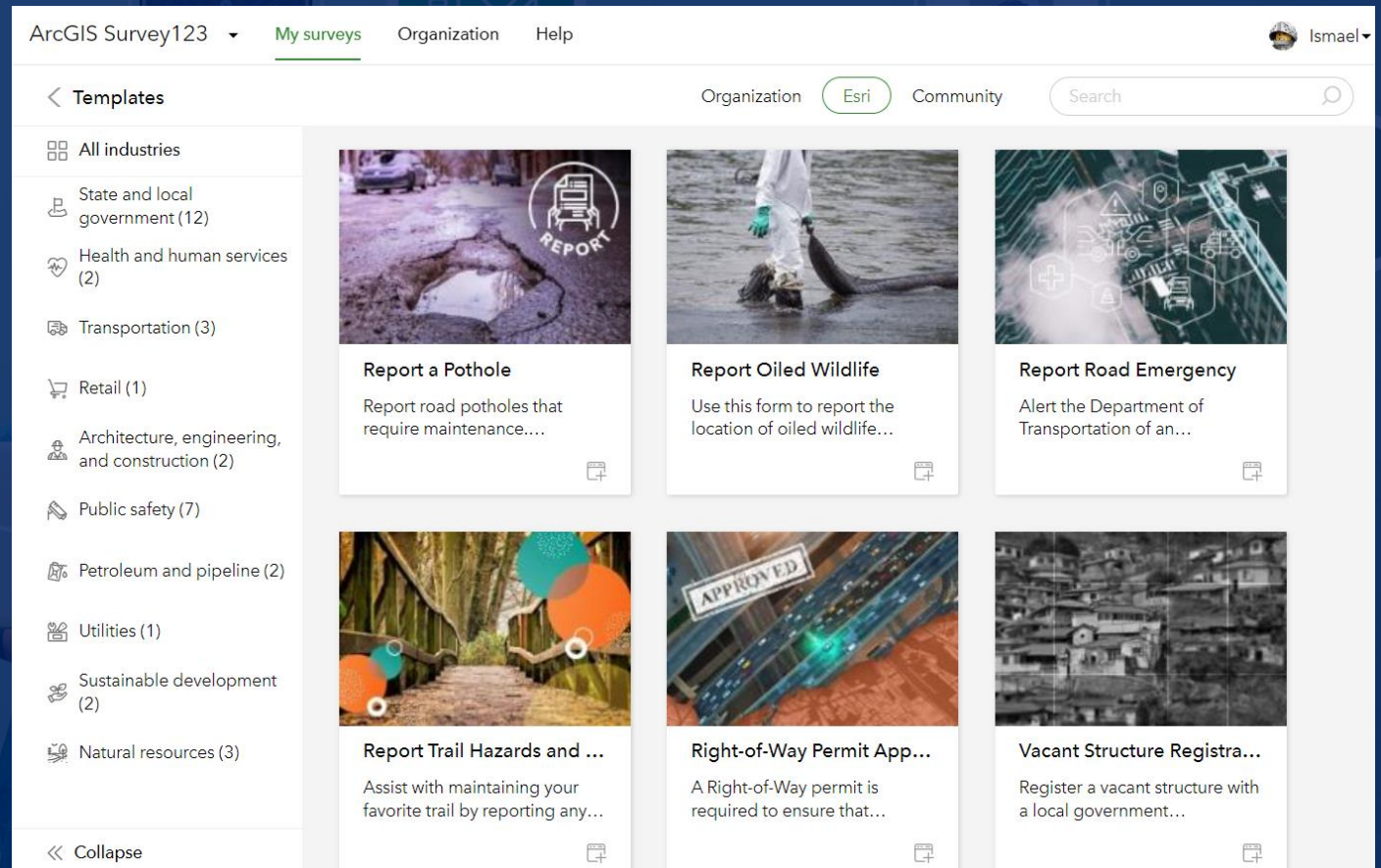


Agenda

- Introduction
- What's new in Survey123 web designer
- What's new in Survey123 Connect
- **Survey123 templates**
- Road Map
- Learn more, Q&A

Survey123 templates

- Use Survey123 templates to kick-start survey design
- A good collection templates:
 - Saves time
 - Helps with consistency
 - Shows best practices
 - Inspires



Survey123 templates

- ArcGIS administrators can now control what templates get exposed to Survey123 authors:
 - Esri
 - Community
 - Organization
- Survey123 template settings apply to all Survey123 authors in your organization

ArcGIS Survey123 My surveys Organization help

Ismael Demo Org All survey Settings

General

Map

Surveys

Tutorials tab ⓘ Show the Tutorials tab in Survey123 Connect. The content in the Tutorials tab is regularly updated from online sources.

Show the Tutorials tab

Community tab ⓘ Show the Community tab in Survey123 Connect. The content in the Community tab is regularly updated from online sources.

Show the Community tab

Templates

Show the following templates when creating a new survey:

- Organization templates

Select the group whose surveys will be made available to authors as templates.

Survey123 Custom Templates

- Templates from Esri
- Templates from the Survey123 community

Save

Submit your designs to the Survey123 Community gallery

[Learn more about submitting](#)

ArcGIS Survey123

Overview

Gallery

Resources

Downloads

Sign In

Pricing



ArcGIS Survey123 Community Gallery

Feature a form in ArcGIS Survey123

[Submit your form →](#)



The screenshot shows a mobile form titled "Environmental Report" with a "Survey123" logo in the top right. The form includes a "Date and time of observation" section with fields for "1/1/2023" and "12:00 PM". Below this is an "Observation location" section with a map of Lake Mathews and the Teanahu Valley. A search bar above the map says "Find address or place". At the bottom, there is a question "Is your report concerning a public or private body of water?" with radio buttons for "Private" and "Public". The form is overlaid on a background of nature photos, including a forest and a school of fish.

Get access to templates and share your forms

The ArcGIS Survey123 community showcases powerful, location-based data collection form templates within Survey123 Connect and the Survey123 web designer. Inspire others with your innovative designs and explore examples from others in your community or industry to help jumpstart your work.



Agenda

- Introduction
- What's new in Survey123 web designer
- What's new in Survey123 Connect
- Survey123 templates
- **Road Map**
- Learn more, Q&A

ArcGIS Survey123 Road Map

Near-term (Dec 2022-March 2023)

- More powerful web designer authoring
 - Multilingual surveys
 - Better calculations: Layer queries
 - Audio question type
 - Organization templates
 - Community gallery
- Field data collection
 - Support for Laser Tech laser rangefinders
 - Location sharing capabilities in the mobile app
- Automation
 - Create reports from Microsoft Power Automate

Mid-term (April 2023-December 2023)

- More powerful web designer authoring
 - Dynamic lists
 - Better data validation rules
 - Range question type
- Survey123 Connect enhancements
 - Feature layer view creation from Connect
- Mobile app
 - Automatically provision default surveys
 - Image redaction
 - Smart assistants

Long-term (2024)

- Next-generation Survey123 mobile app
 - Fully backwards compatible & familiar UX
 - Indoors
 - Launch survey from a map & map search
 - Field coordination: To do list
 - Display/edit repeats as a table
- Public data collection
 - Highly scalable public surveys
- Smart assistants
 - Smart document extraction
- Website
 - Edit Survey123 records from the website
 - Create reports from Experience Builder and link

Laser Tech's TruPulse laser rangefinder support

- Integrate ArcGIS Survey123 with Laser Tech's TruPulse laser rangefinders
- Typical workflows:
 - Measure heights, gaps, distances and slopes
 - Offset mapping
- Connect via Bluetooth to Survey123
- Integrate measurements directly into Survey123 forms
- Devices supported:
 - TruPulse 200x (measures distances and heights). iOS
 - TruPulse 360R and B (distances, heights and azimuth). Android
- Planned release Q1 2023. Available for Beta testing



Laser Tech's TruPulse laser rangefinder support



Laser Tech's TruPulse laser rangefinder support



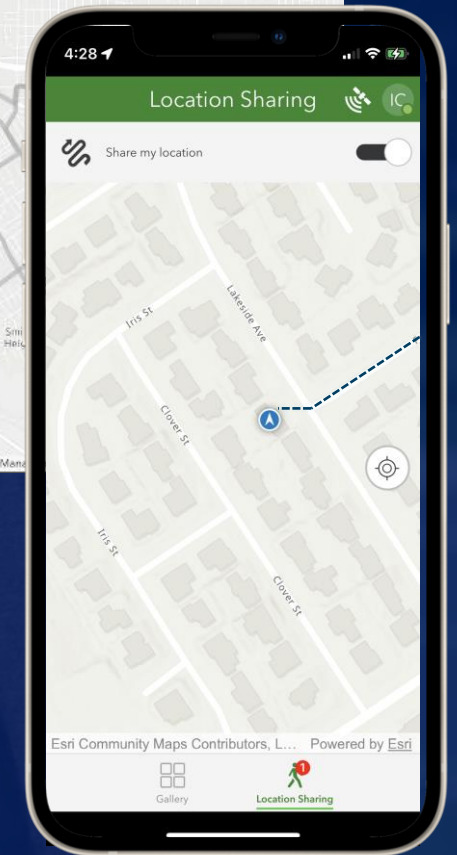
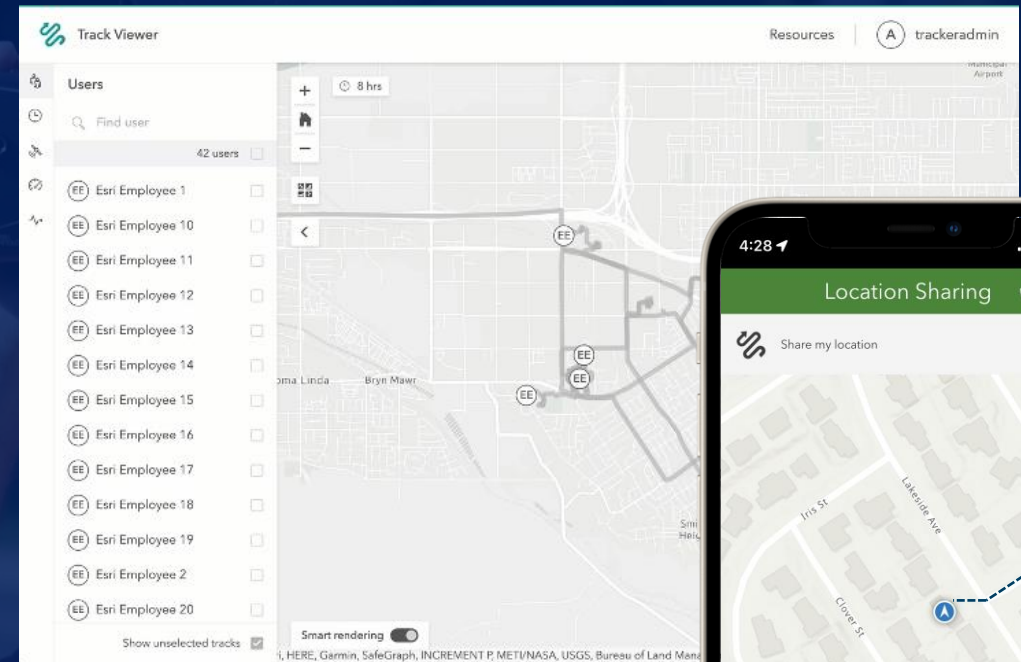
Laser Tech's TruPulse laser rangefinder support

A person wearing a dark cap with 'lasertech.com' on the side, safety glasses, and a high-visibility safety vest is shown in profile, holding a laser rangefinder to their eye. The background is a blurred outdoor setting.

- Integrate ArcGIS Survey123 with Laser Tech's TruPulse laser rangefinders
- Typical workflows:
 - Offset mapping
 - Measure heights, gaps, distances and slopes
- Connect via Bluetooth to Survey123
- Integrate measurements directly into Survey123 forms
- Devices supported:
 - TruPulse 200x (measures distances and heights). iOS
 - TruPulse 360R and B (distances, heights and azimuth). Android
- Planned release Q1 2023. Available for Beta testing

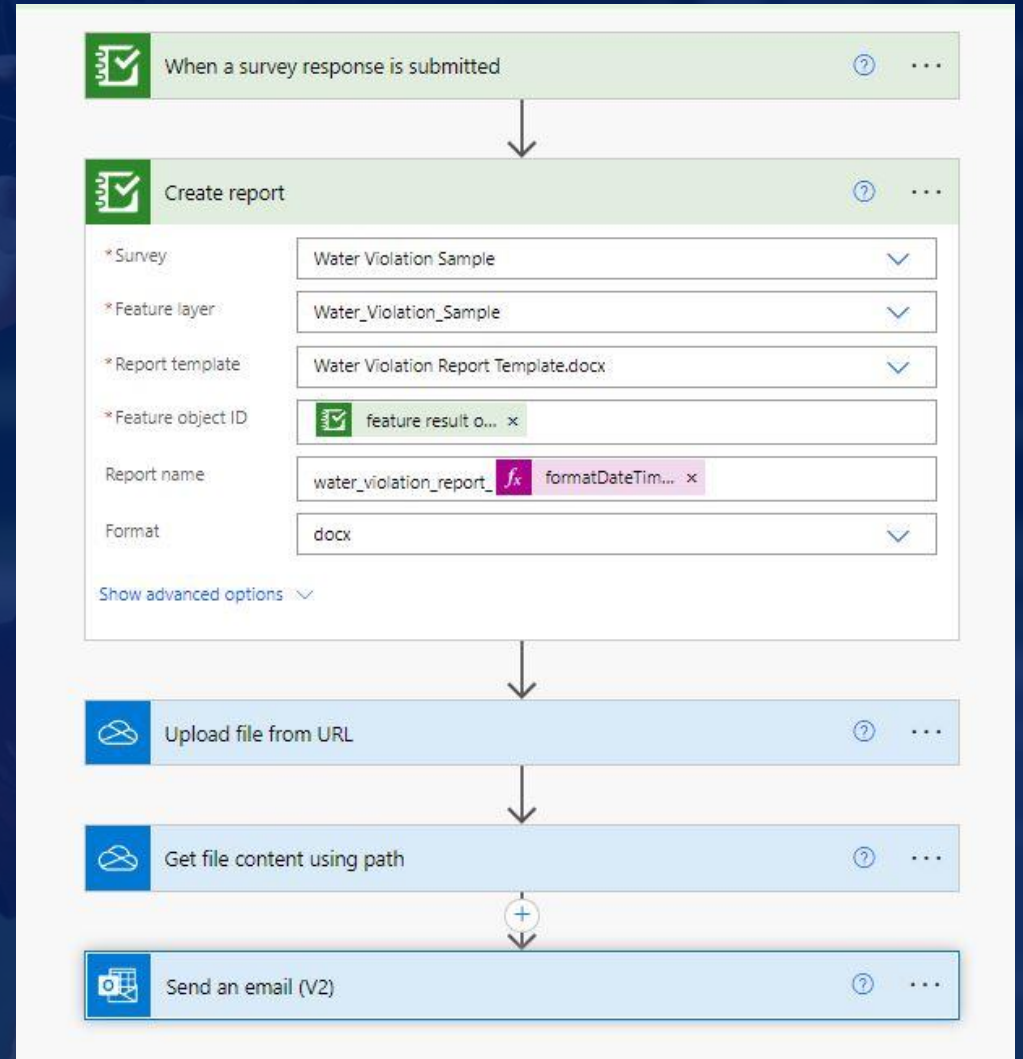
Location sharing in ArcGIS Survey123

- Monitor the last known location of Survey123 users
 - Coordinate work
 - Safety
- Understand where Survey123 users have been
 - Regulatory compliance
 - QA/QC and field work analysis
- Requires a location sharing license
 - Included with mobile worker user type
- Planned release Q1 2023. Available for Beta testing January 2023



Create Reports from Microsoft Power Automate

- New Create Report action
 - Create reports when a survey is submitted
 - Schedule report generation
 - Share reports via cloud storage or email
- Available for early adopters January 2023
- General release planned for February-March 2023



ArcGIS Survey123 Road Map

Near-term (Dec 2022-March 2023)

- More powerful web designer authoring
 - Multilingual surveys
 - Better calculations: Layer queries
 - Audio question type
 - Organization templates
 - Community gallery
- Field data collection
 - Support for Laser Tech laser rangefinders
 - Location sharing capabilities in the mobile app
- Automation
 - Create reports from Microsoft Power Automate

Mid-term (April 2023-December 2023)

- More powerful web designer authoring
 - Dynamic lists
 - Better data validation rules
 - Range question type
- Survey123 Connect enhancements
 - Feature layer view creation from Connect
- Mobile app
 - Automatically provision default surveys
 - Image redaction
 - Smart assistants

Long-term (2024)

- Next-generation Survey123 mobile app
 - Fully backwards compatible & familiar UX
 - Indoors
 - Launch survey from a map & map search
 - Field coordination: To do list
 - Display/edit repeats as a table
- Public data collection
 - Highly scalable public surveys
- Smart assistants
 - Smart document extraction
- Website
 - Edit Survey123 records from the website
 - Create reports from Experience Builder and link

Agenda

- Introduction
- What's new in Survey123 web designer
- What's new in Survey123 Connect
- Survey123 templates
- Road Map
- **Learn more, Q&A**

Learn More, Q&A

- Stay up-to-date. Join us in the Esri Community!
- [Participate in the ArcGIS Survey123 Early Adopter beta program](#)
- [Sign up for our quarterly newsletter](#)
- [New LinkedIn ArcGIS Survey123 User Group](#)



esri[®]

**THE
SCIENCE
OF
WHERE**[®]

