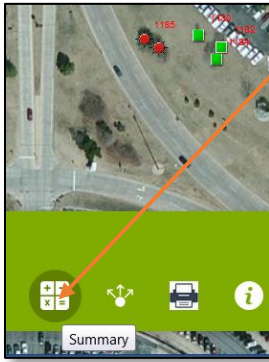


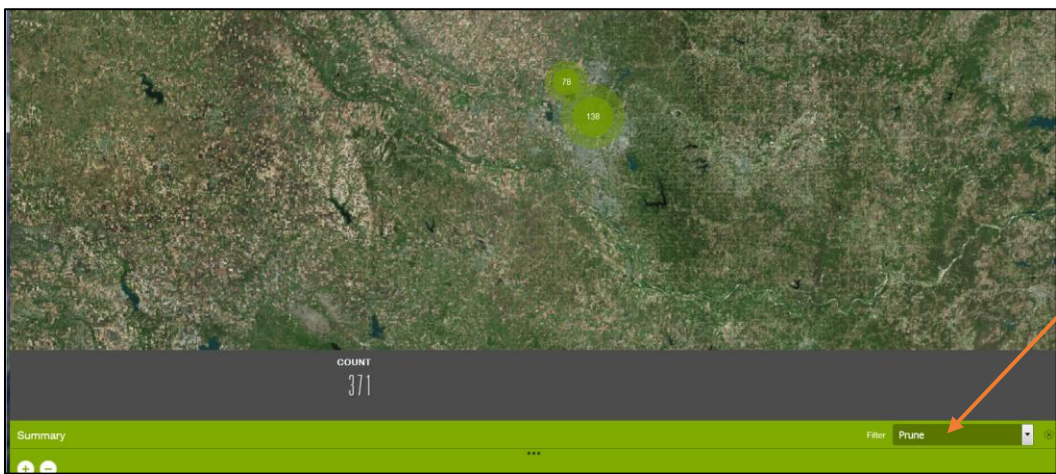
Summary



I zoom to an area of interest... and then ask for a summary... it works...

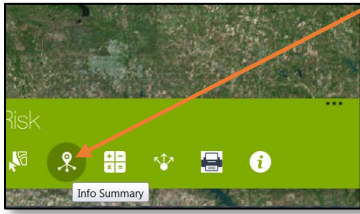


When the filter is changed, the extent returns to default... the figure above is in the '138' circle.

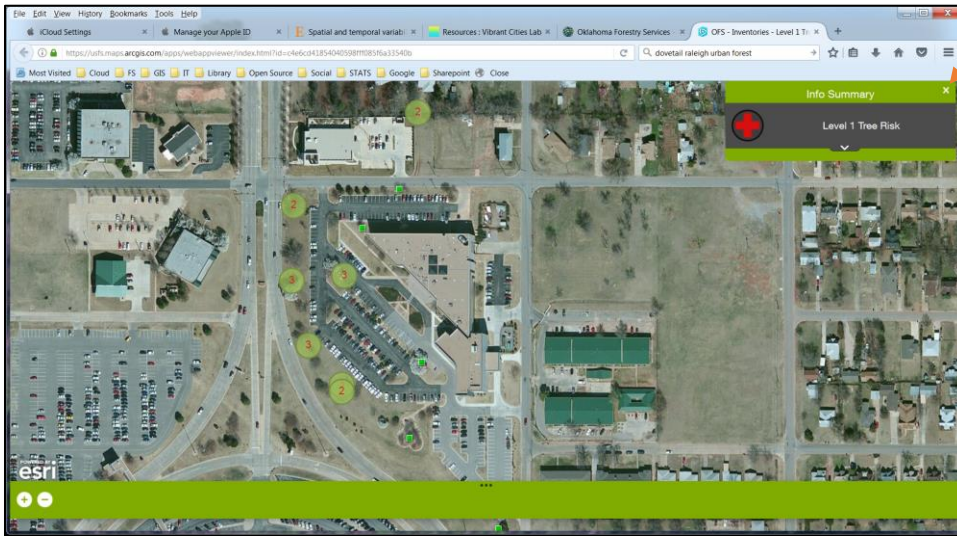


It seems that the extent when data was summarized should remain as the extent for the change of filter (i.e. my area of interest).

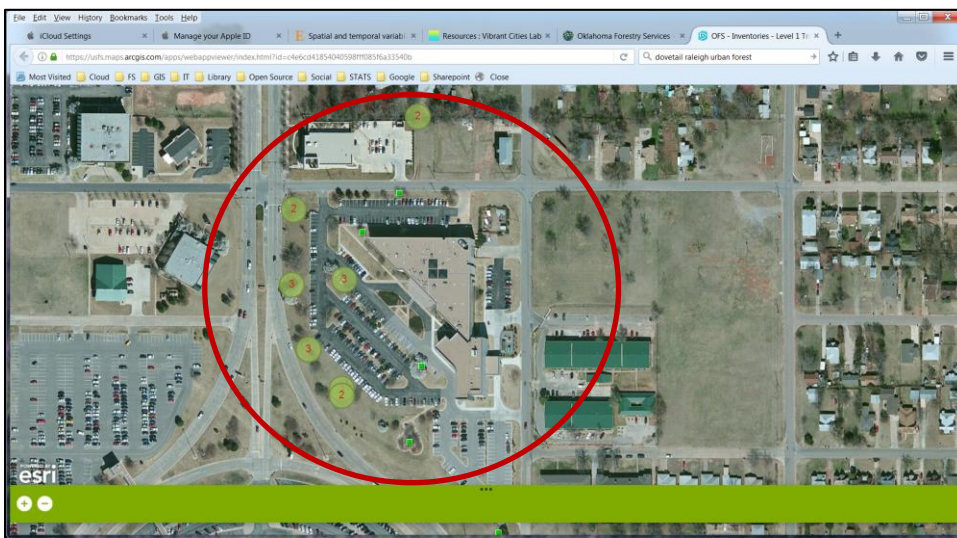
Info Summary



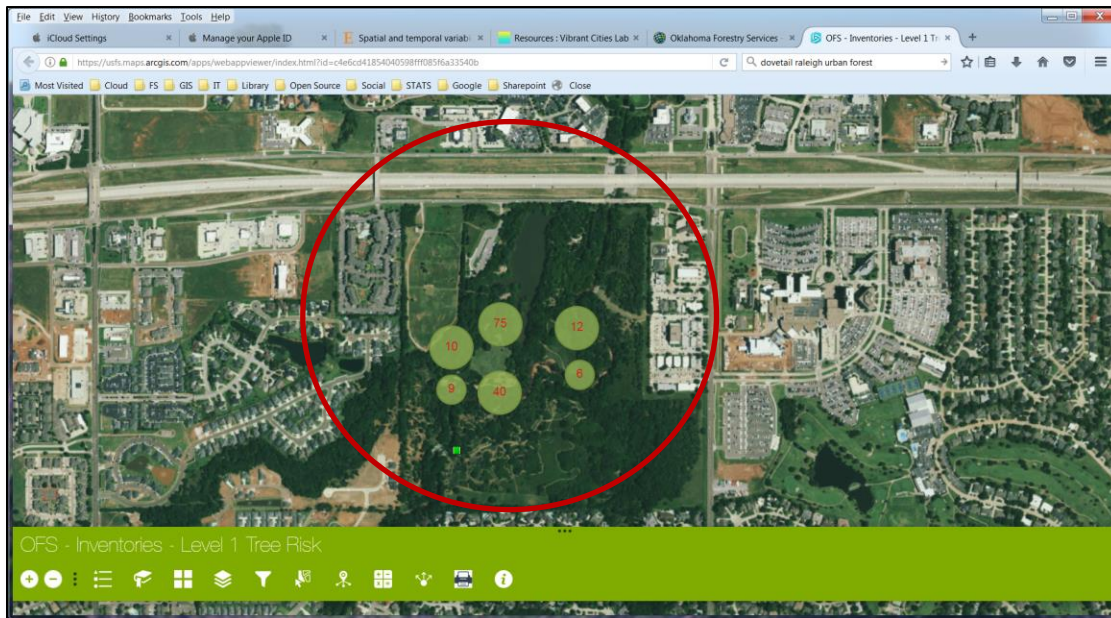
I zoom to an area of interest... and then ask for a info summary... it works...



When I click on the 'x', the info summary circles do NOT clear and feature layer data (points) do NOT reappear.



If I zoom (or bookmark) to a different area, the Info Summary circles appear – can't determine how to clear them. Usually have to refresh browser link!



In Summary, clicking on the 'x' clears the summary circles and returns the feature layer (points).