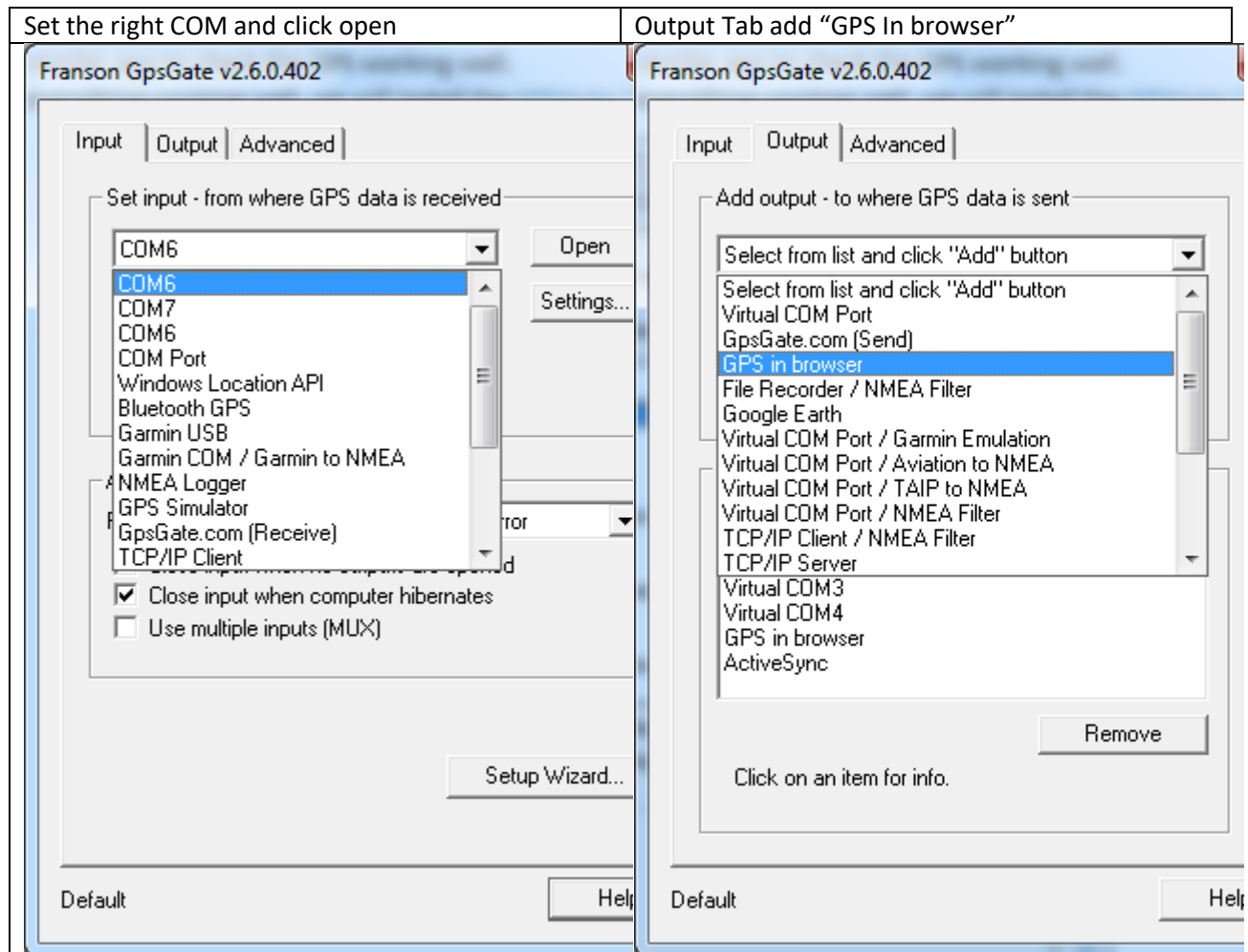


External GPS Guide for WebAppBuilder for Developers

1. Install the Drivers of the GPS device
2. Use [GPSInfo](#) or similar app to check the GPS working well.
3. After checking everything working well, we will install the [GPSGate Client](#).
4. Set the setting for the GPS Gate



And Set Start at boot in Advance tab

For demo purpose only try using this link <http://demo1.systematics.co.il/gps/>

Click MyLocation widget and then open the browser console (F12) if you will see

```
widget [widgets/Search/Widget] created.  
widget [widgets/AttributeTable/Widget] created.  
Load widgetOnScreen: 1.43e+03ms  
External GPS Location: longitude:0 latitude:0  
>
```

"External Gps Location..." Then the GpsGate working good.

5. Download the Custom Add-ons for the [WebAppBuilder for Developers](#)
 - a. Backup original files!!
 - b. Custom [MyLocation Widget](#) ,delete or backup old MyLocation Widget and extract and replace to the folder
[SOME_LOCATION]\WebAppBuilderForArcGIS2.2\client\stemapp\widgets
 - c. Custom [index.html](#) Page, Put in
[SOME_LOCATION]\WebAppBuilderForArcGIS2.2\client\stemapp
6. Run the WebAppBuilder with **HTTP** only! (The local server of GpsGate run only with http)
7. Create new application, try to use MyLocation widget.