



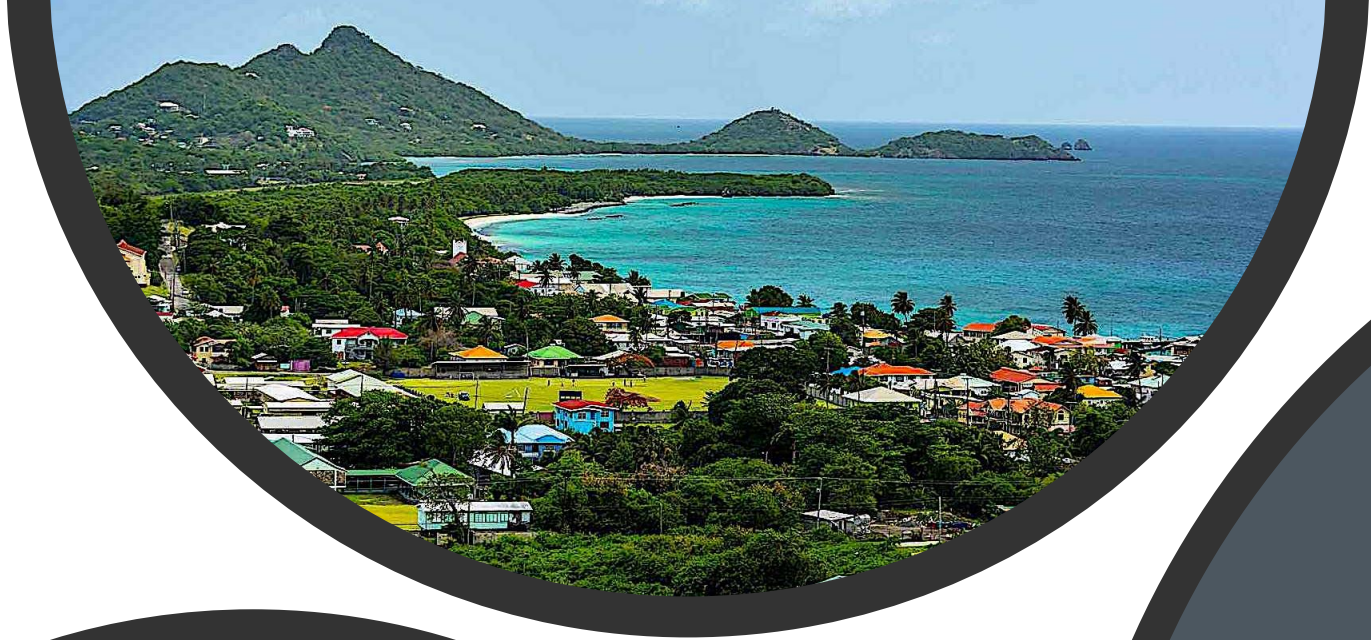
Welcome to the: Your Caribbean Story Webinar Series

We will get started at the top of the hour!



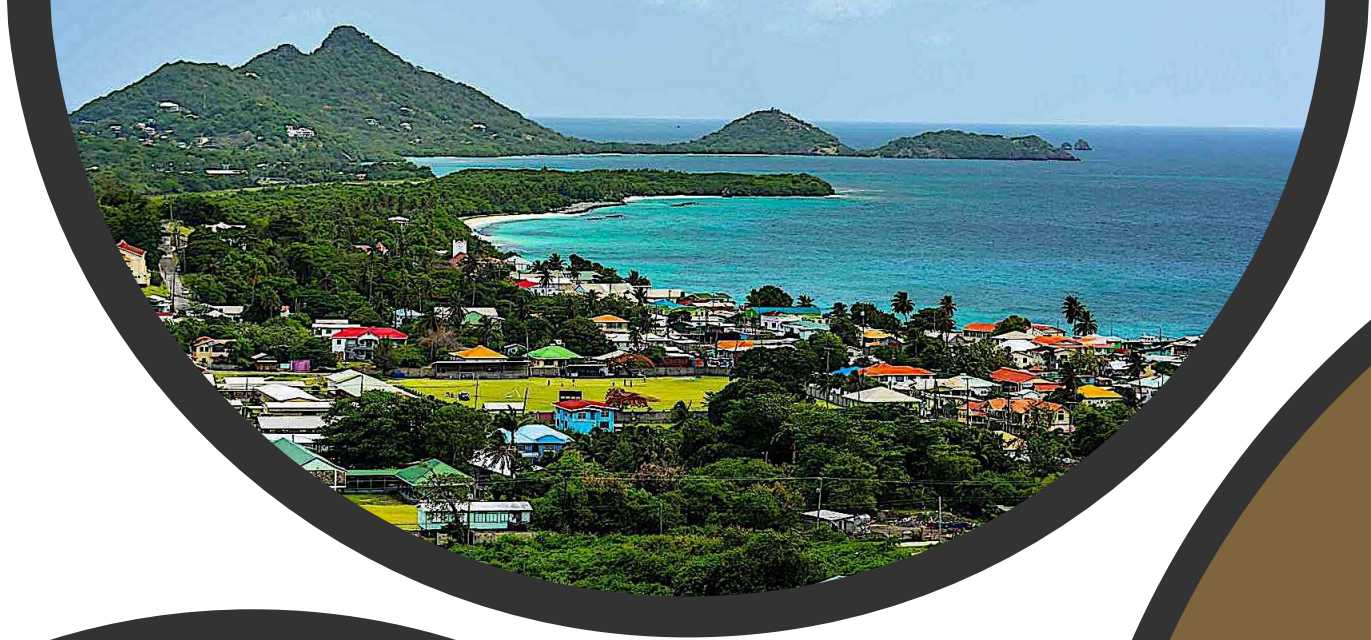
CARIGEO Student Competition #YourCaribbeanStory Get Started with Mapping





Ms.
Kathy Cappelli

Senior Product Engineer,
Learn ArcGIS Team, Esri



Ms. Delphine Khanna

Senior Product Engineer,
Learn ArcGIS Team, Esri

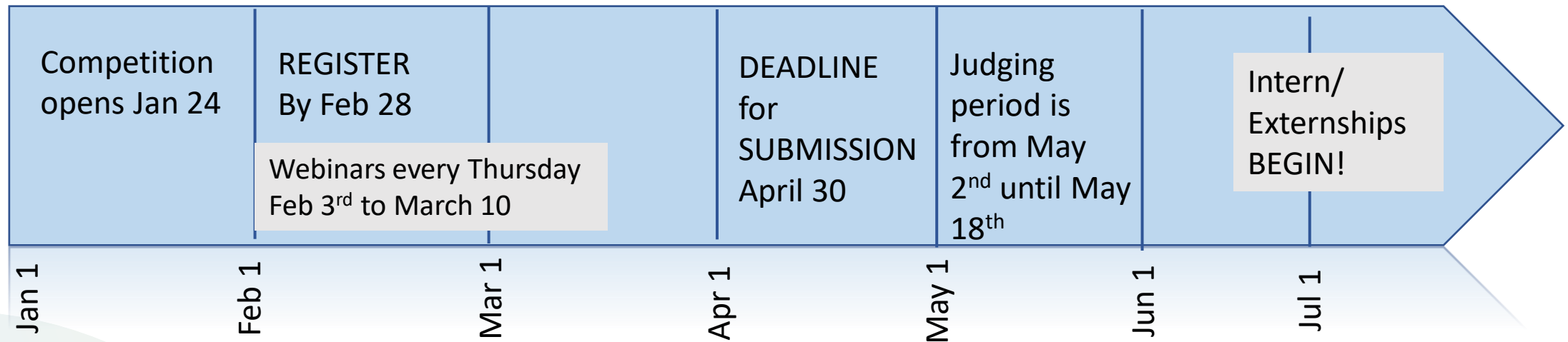
#YourCaribbeanStory Student Competition

An aerial photograph of a coastal town in the Caribbean. The foreground shows a dense cluster of colorful buildings with red, blue, and green roofs. A large green field is visible in the middle ground. The town is situated on a hillside overlooking a turquoise bay. In the background, there are more hills and islands in the distance under a clear sky.

- Agenda
- Overview of contest
- Get Started with Mapping
- Including live demonstrations
- Resources to support you
- Open Q/A
- Close

<https://yourcaribbeanstory.caribbeangeoportal.com/>

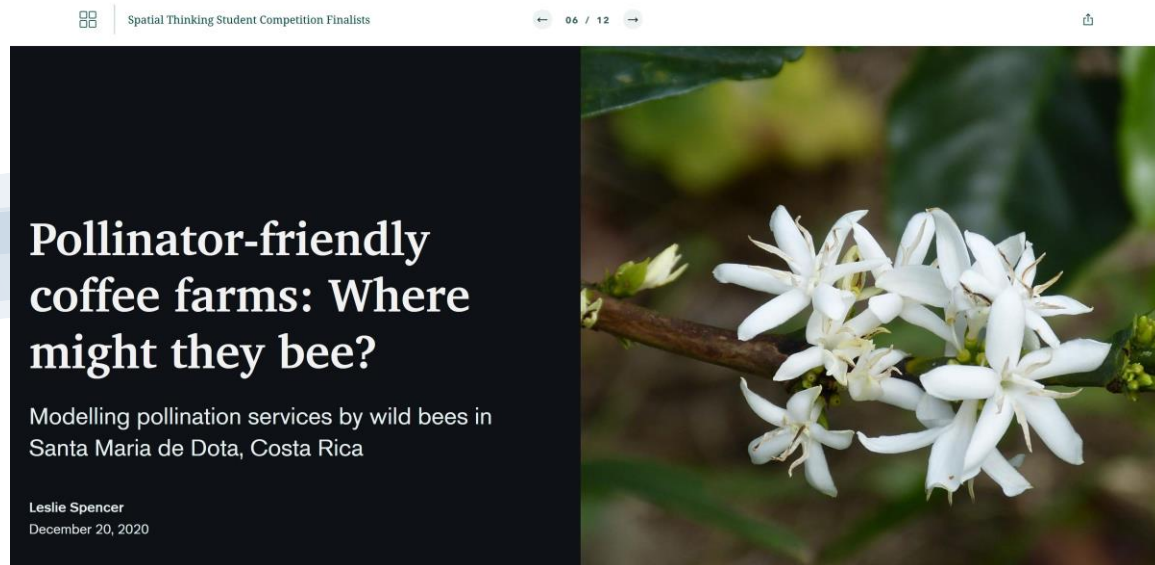
Competition Basics



Winners to be announced on May 23

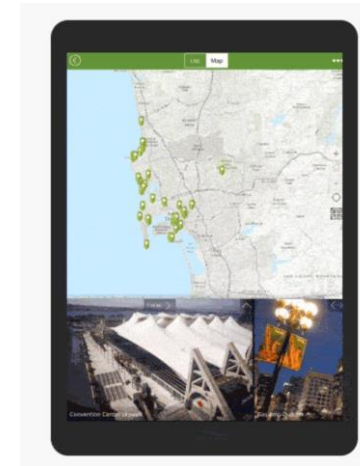
Competition Basics

- Decide which track you want to participate in
 - Place Based Storytelling – Track 1



Competition Basics

- Decide which track you want to participate in
 - GIS Application – Track 2



Build or Configure an engaging and useful app

And then tell us all about it!

Maps tell a story.

- They can simply show a location, or they can be more complex
- They contain and exhibit data
- They should always be truthful and made to ethically convey their message

Poll Question

Open Q/A

Resources available to help you succeed

- [Get started with ArcGIS StoryMaps](#) - A full primer on starting your story, including making a simple map
- [Create a map](#) - Learn how to add points to a map in ArcGIS Online
- [Convert a list of historic places into a map in ArcGIS Online](#) - Quick tutorial on uploading your own data from a spreadsheet to a map
- [Measure global hunger](#) - Learn how to join data, or combine two datasets into one to map new attributes
- [Explore dynamic imagery of a volcano eruption](#) - Use imagery to view real-time changes to the Earth's surface, including under smoke and cloud cover
- [Depict land-use change with time animation](#) - Use historical imagery to show human change to the landscape over time

Resources available to help you succeed

General questions? Email: YourCaribbeanStory@esri.com

Interested in our Mentor program?

Email Dr. Ramlal @:
bheshem.ramlal@sta.uwi.edu or
bheshemramlal@gmail.com

Webinar Series

- Starting on Feb 3rd – every Thursday 12 noon eastern
- Feb 3rd Preparing for the competition
- Feb 10th Get Started with Mapping
- **Feb 17th Creating a Good Story with ArcGIS StoryMaps**
- Feb 24th Get Started with Analysis
- Mar 3rd Introduction to Visualization
- Mar 10th Building an App 101

REGISTER Today!

<https://www.eventbrite.com/e/yourcaribbeanstory-webinar-3-creating-a-good-story-tickets-259631724477> [eventbrite.com]



Thank you!

Be sure to join us next week

