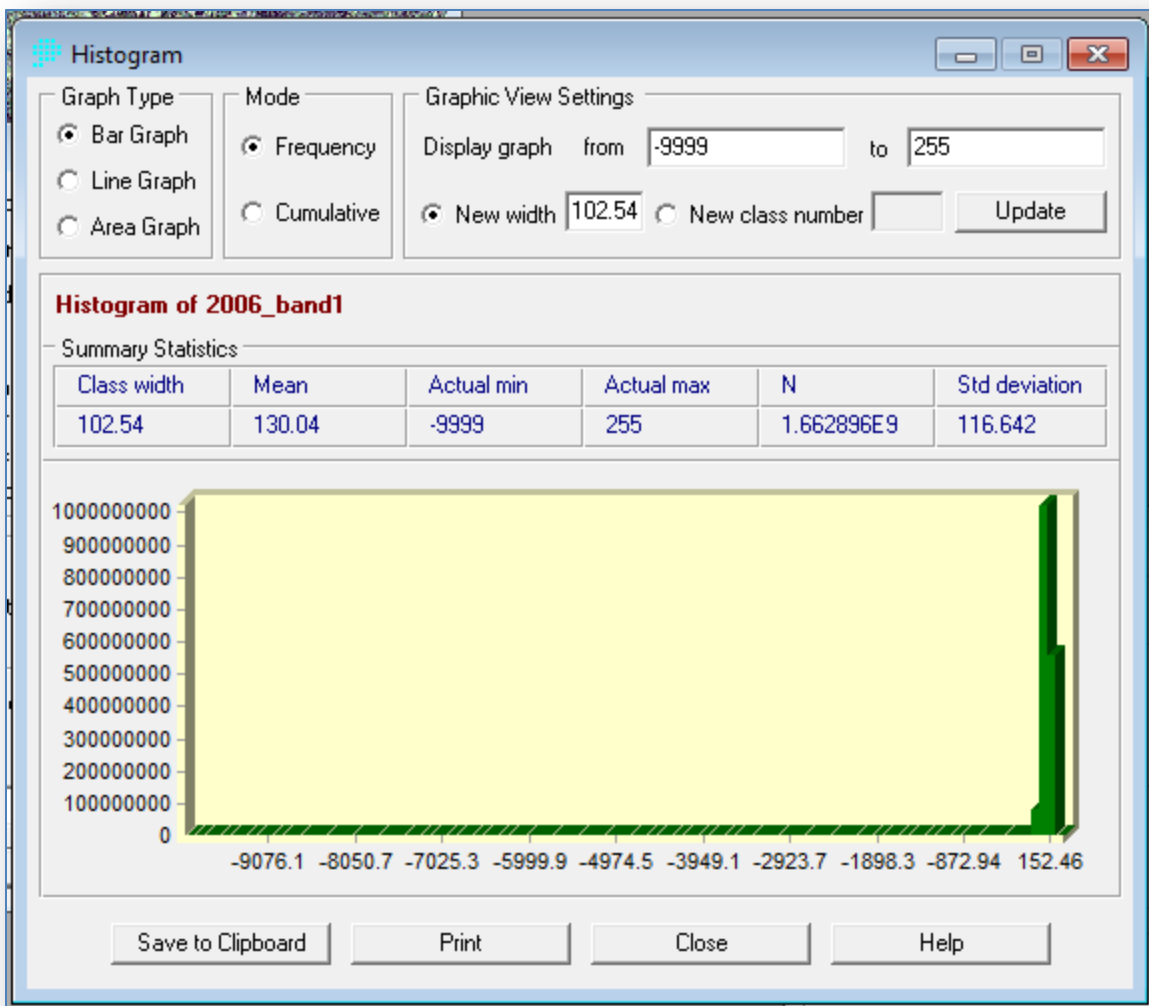


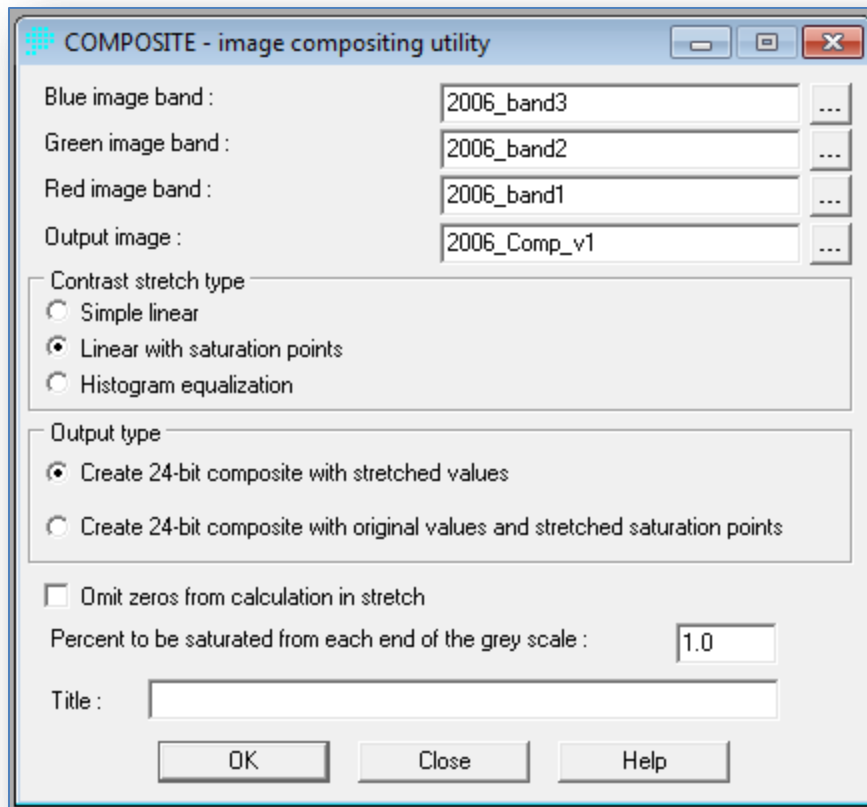
The image shows a 'Metadata' dialog box with a table of raster file properties. The table has two columns: a property name and its corresponding value. The properties include file name, format, type, dimensions, coordinate system, resolution, and value ranges.

Metadata	
Name	2006_band1
File format	IDRISI Raster A.1
File title	
Data type	Real
File type	Binary
Columns	42962
Rows	38708
Ref. system	Utm-10n
Ref. units	Meters
Unit dist.	1.0000000
Min. X	555104.0000000
Max. X	598066.0000000
Min. Y	5187753.0000000
Max. Y	5226461.0000000
Pos'n error	Unknown
Y Resolution	1
X Resolution	1
Min. value	-9999.0000000
Max. value	255.0000000
Display min	0.0000000
Display max	255.0000000
Value units	Unspecified
Value error	Unknown
Flag value	-9999.0000000
Flag def'n	Background
Legend cats	0
Categories	

Metadata from band 1, same values for all three bands.



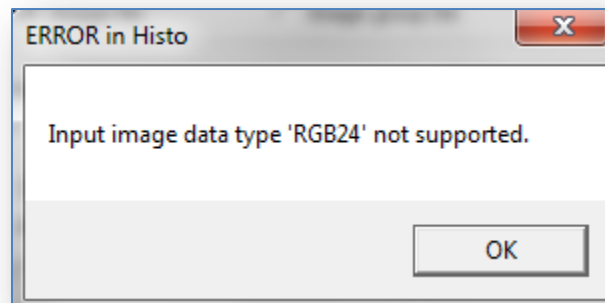
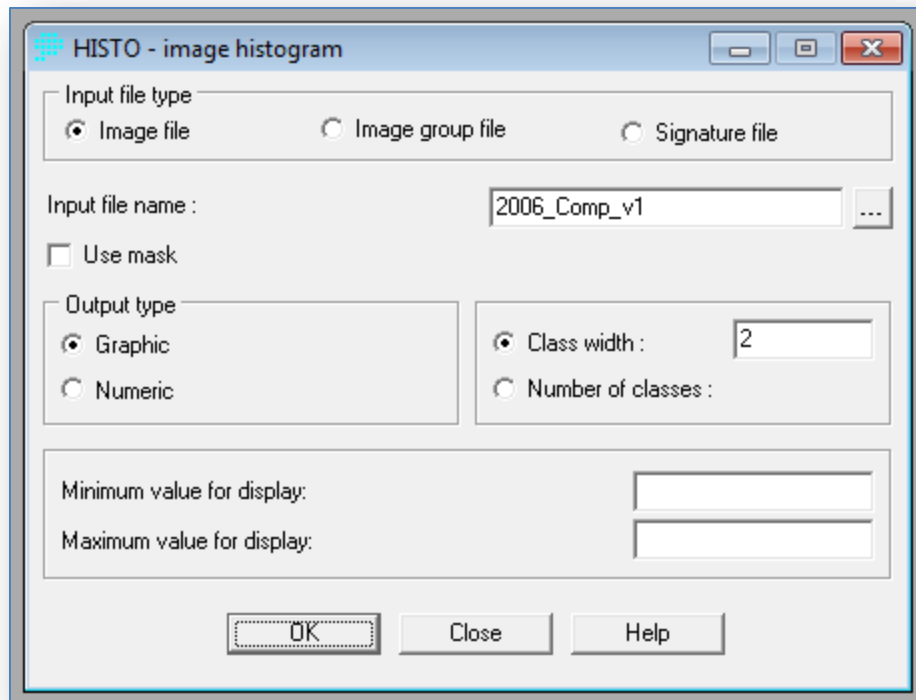
Histogram from band 1.



Settings used for composite image.



Example of discoloration in resulting composite.



Attempted histogram of composite.