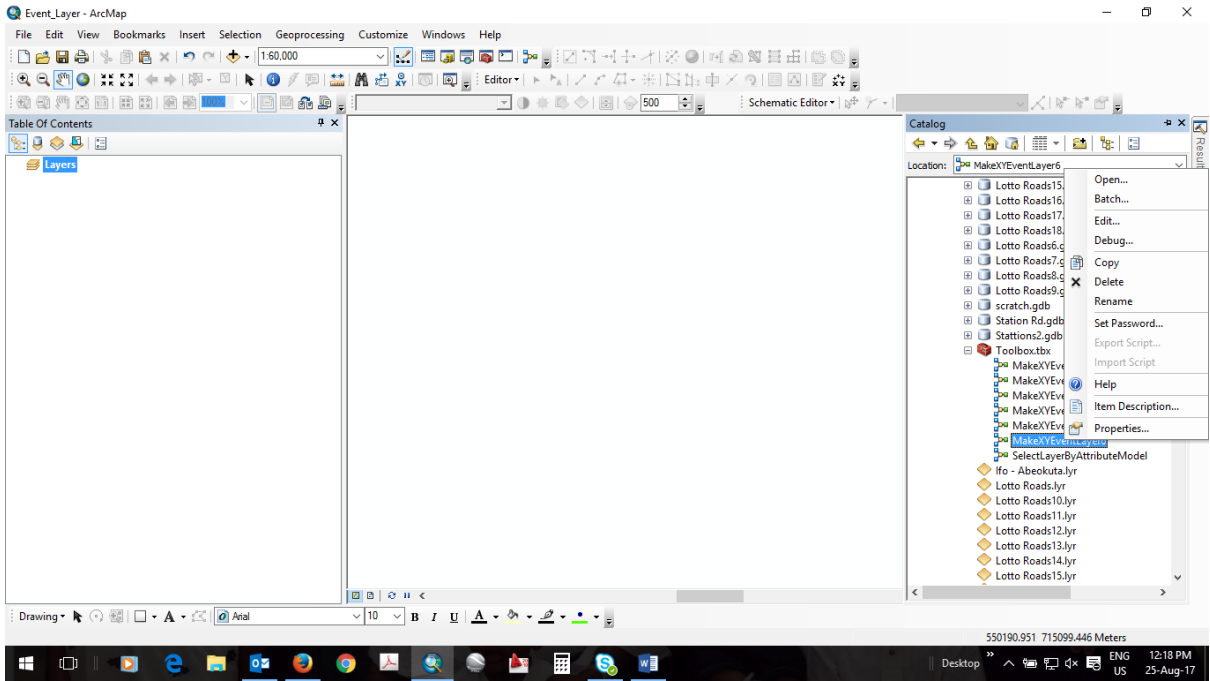
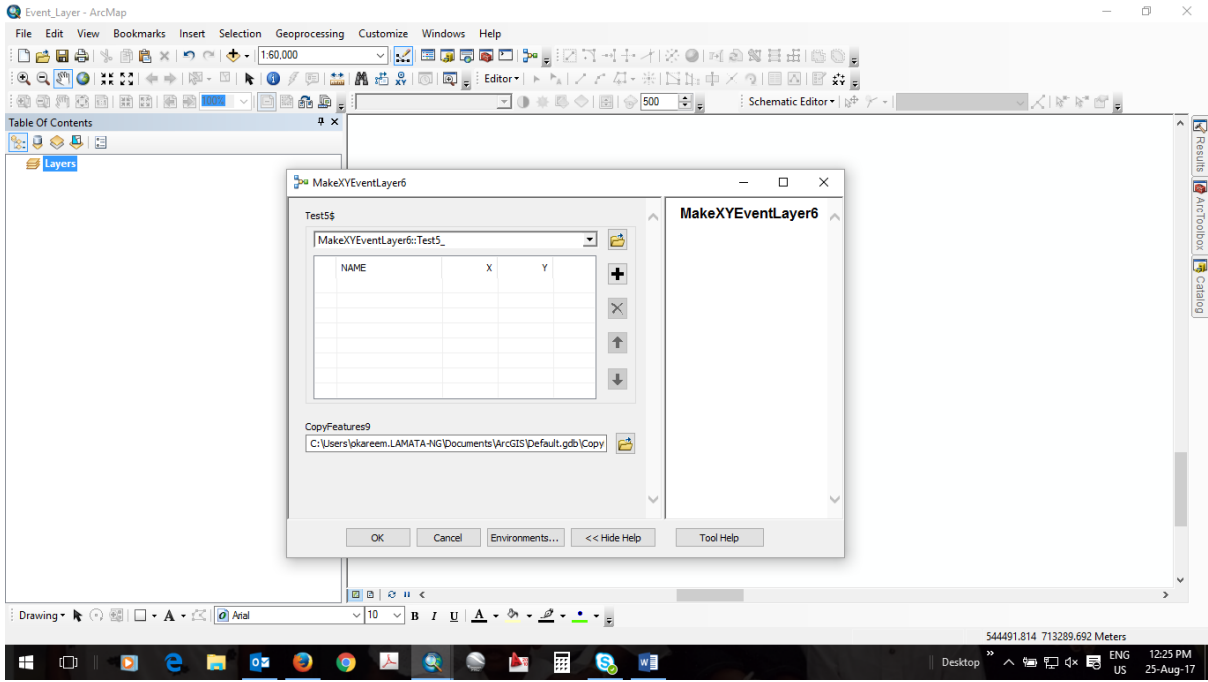
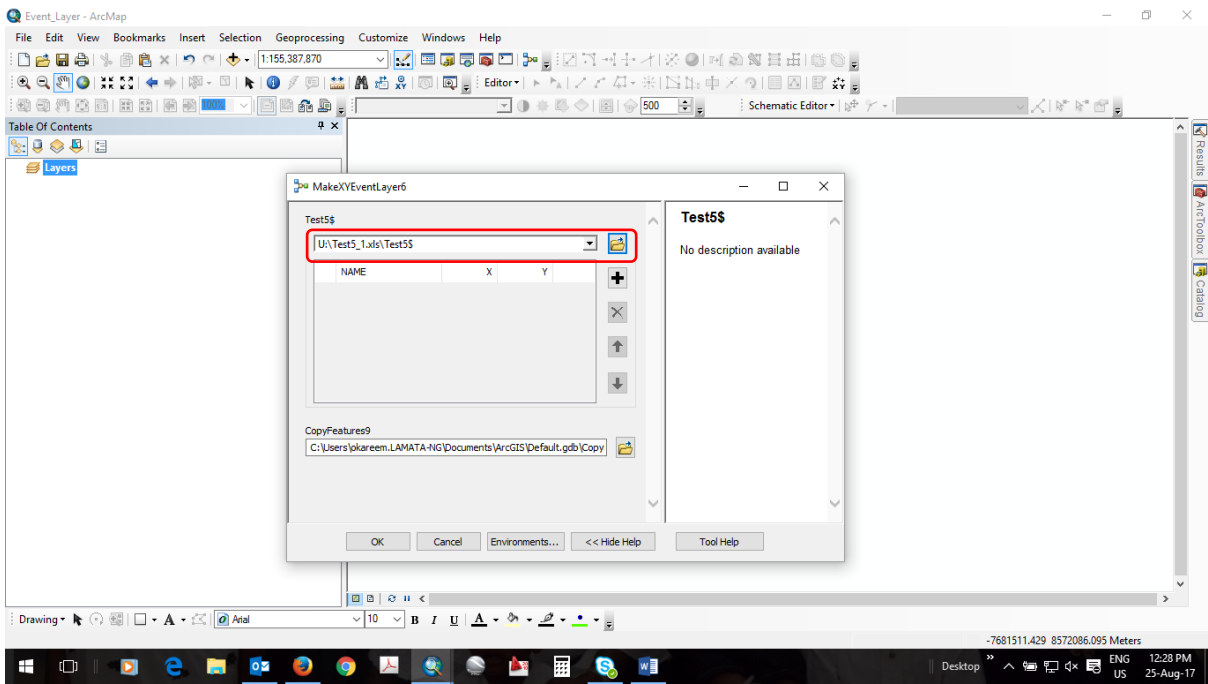


Opened the Tool

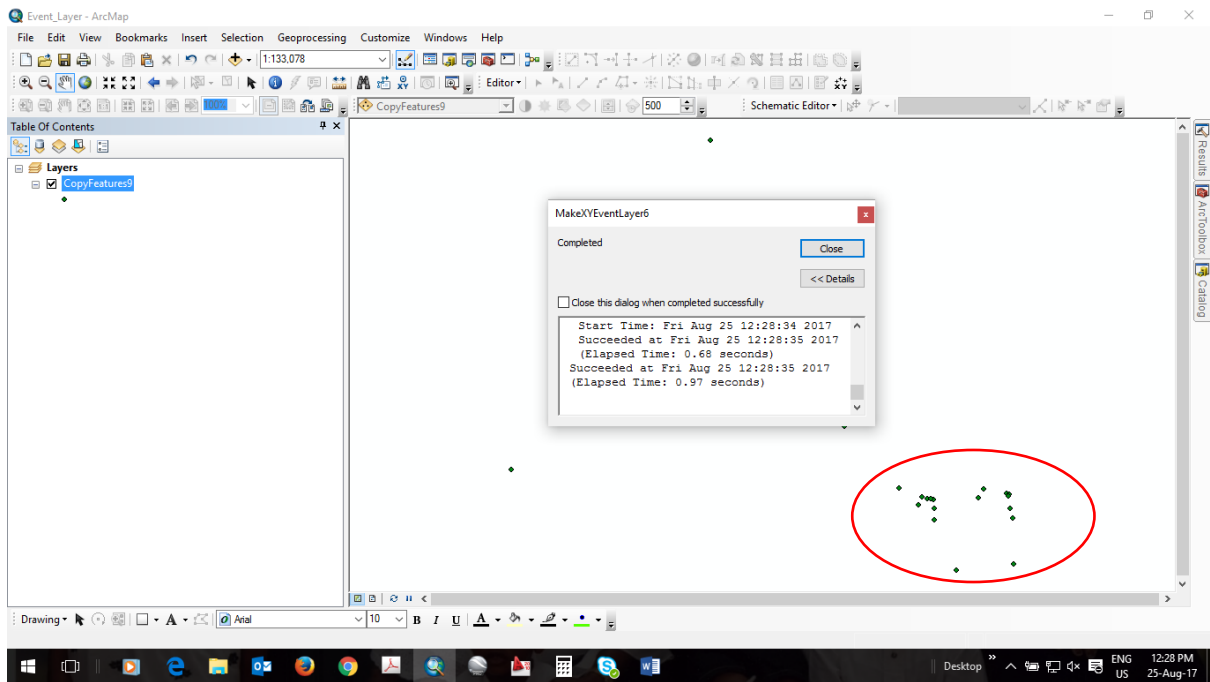




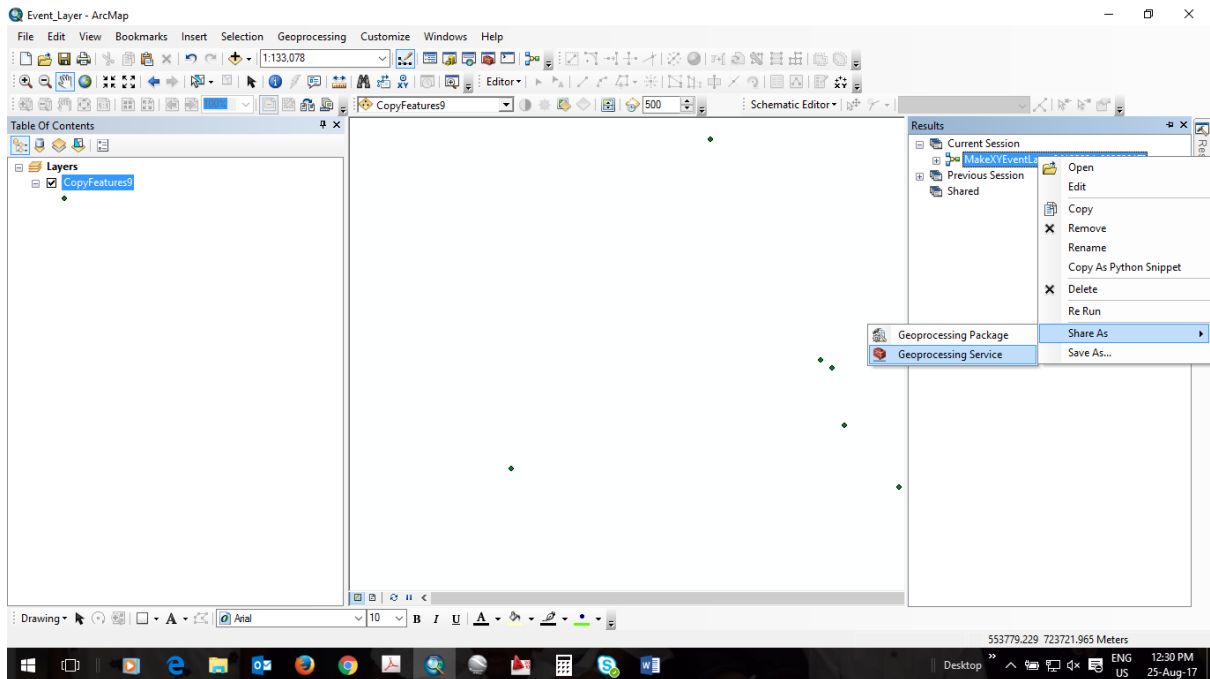
Selected the table with xy coordinates

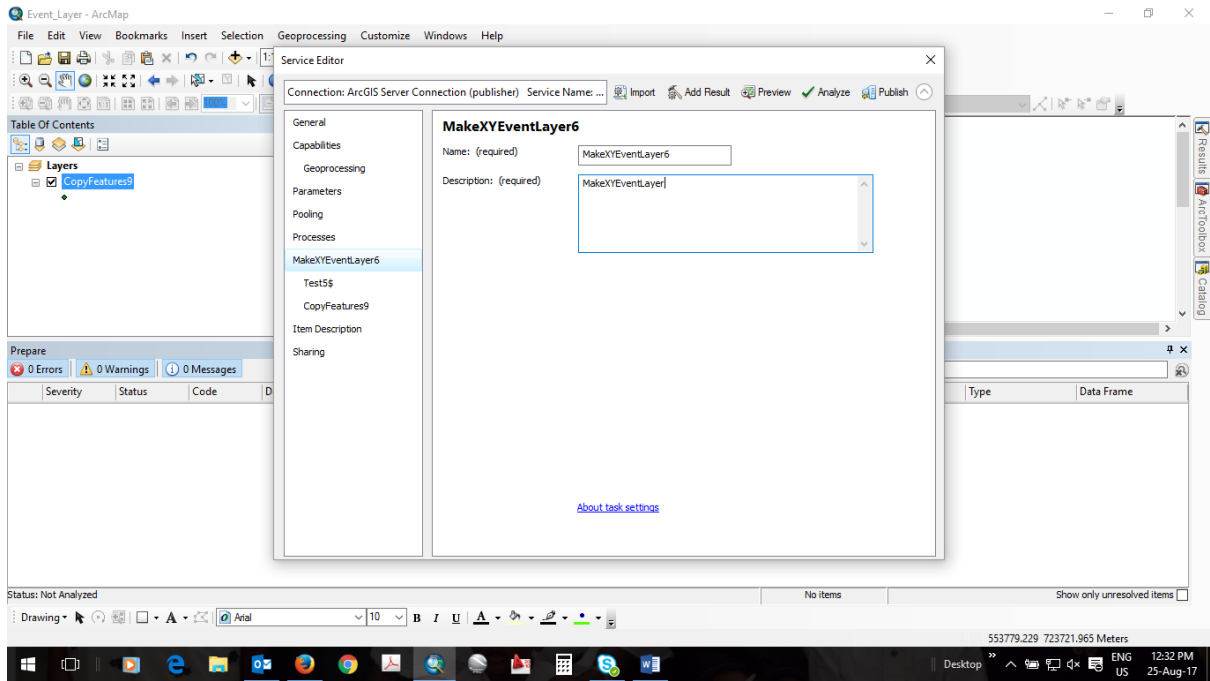


Ran it... Successful. XY Coordinates Mapped

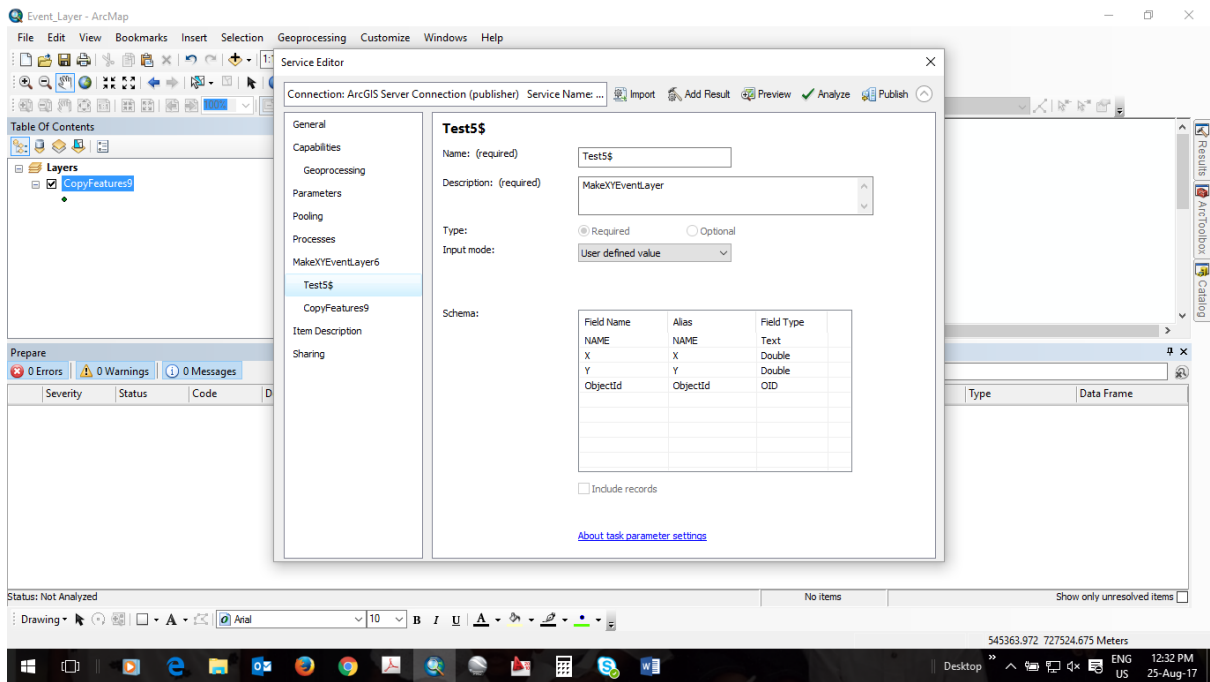


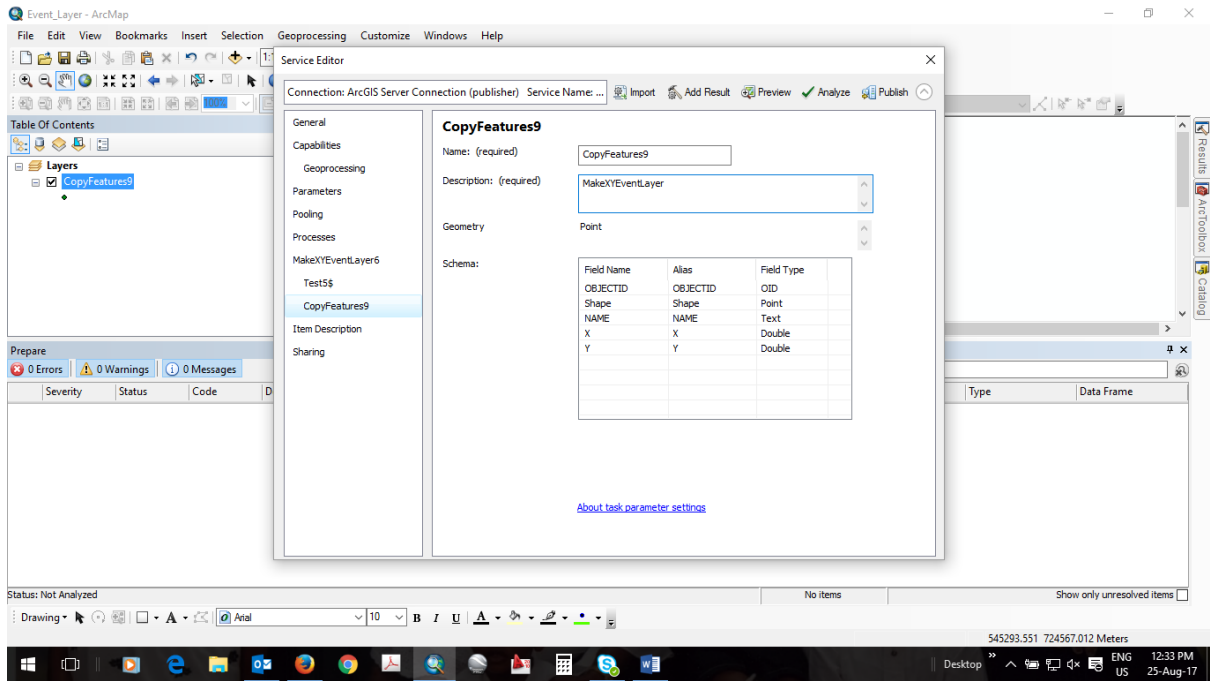
Shared result as geoprocessing service



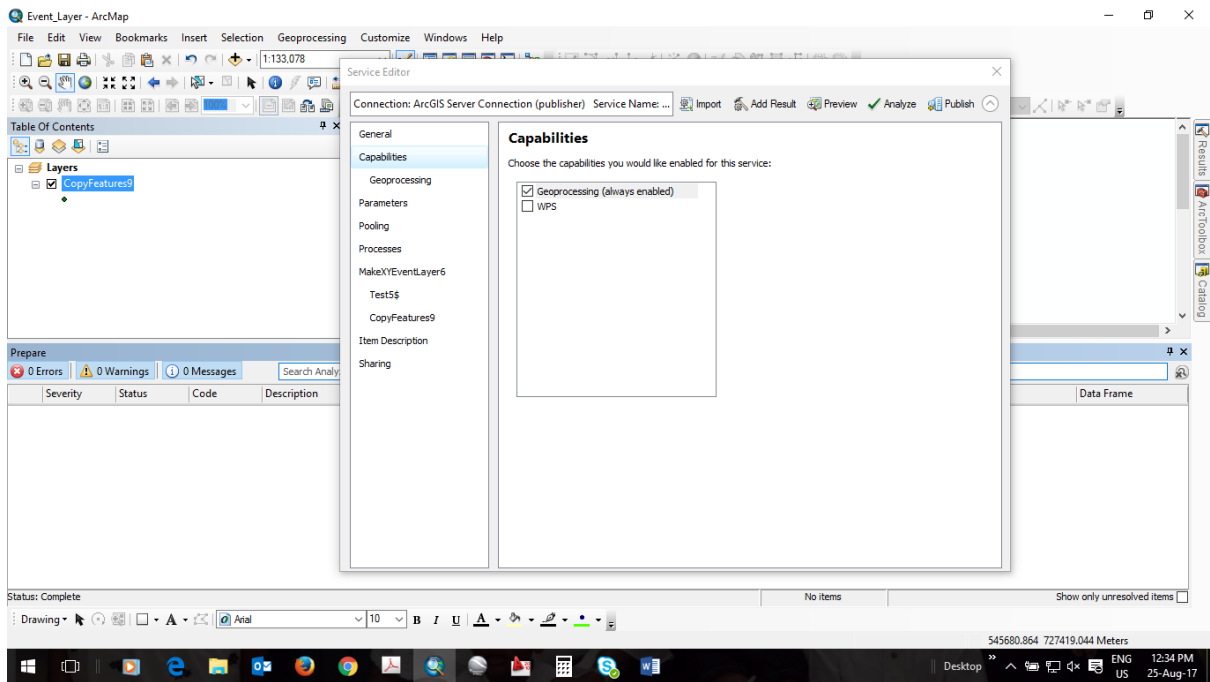


Specified 'User Defined'

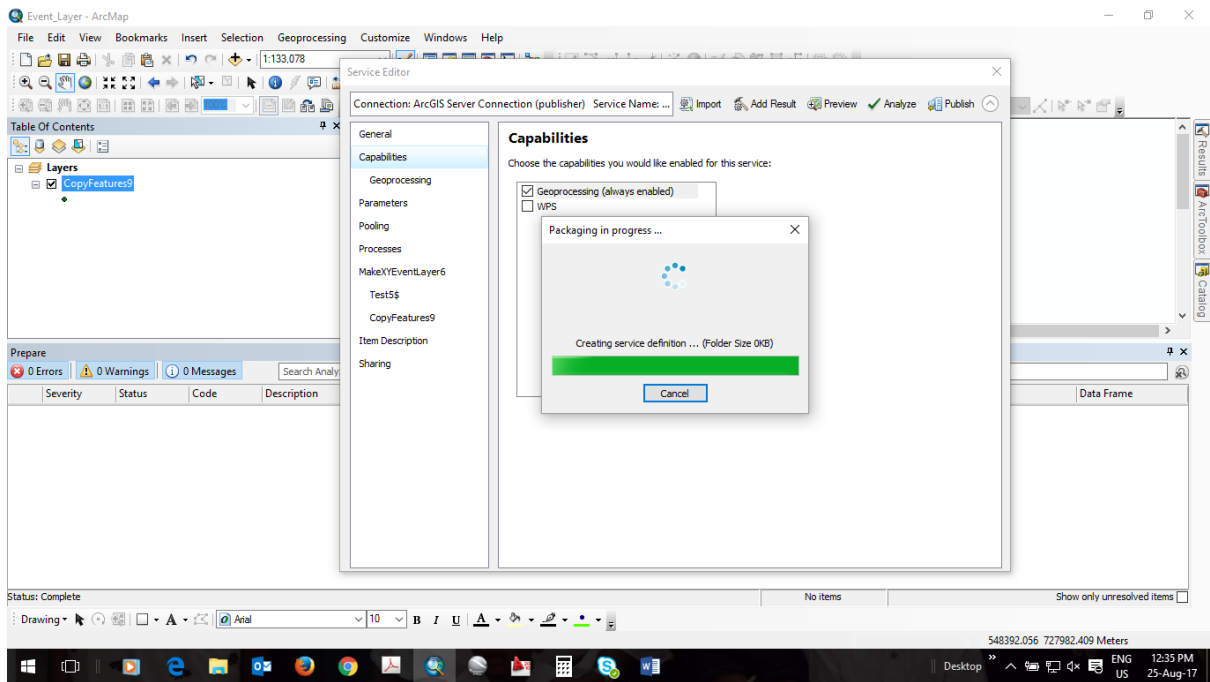




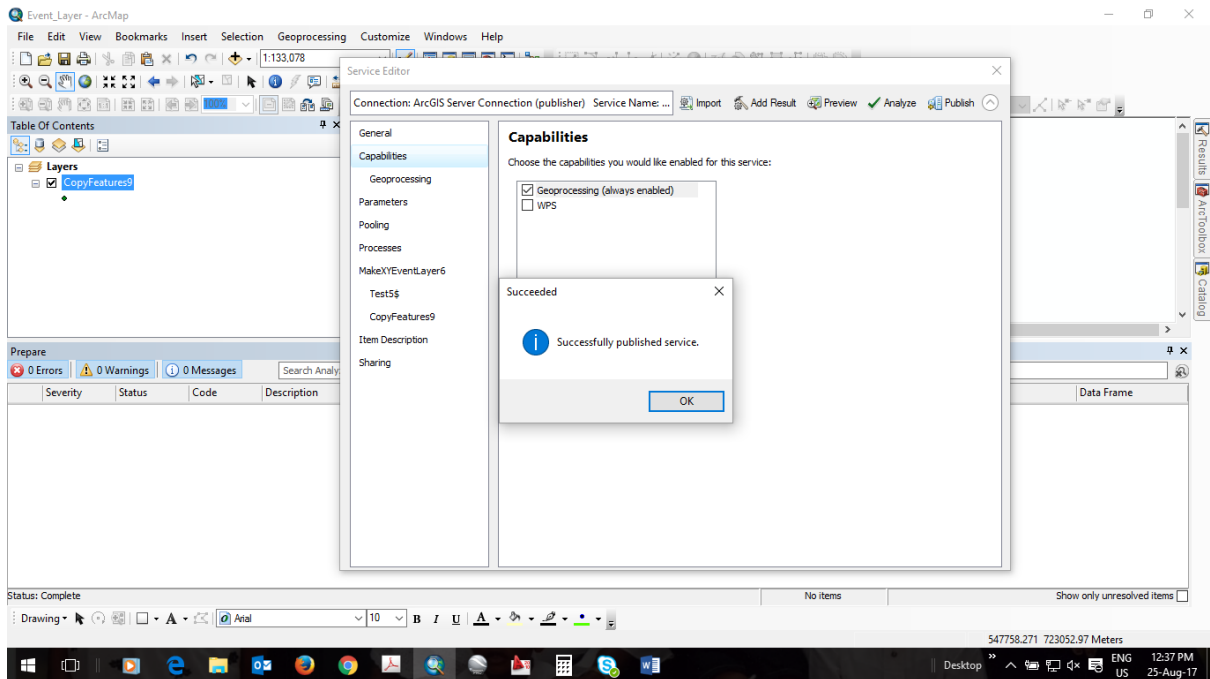
Analysis done. No errors.



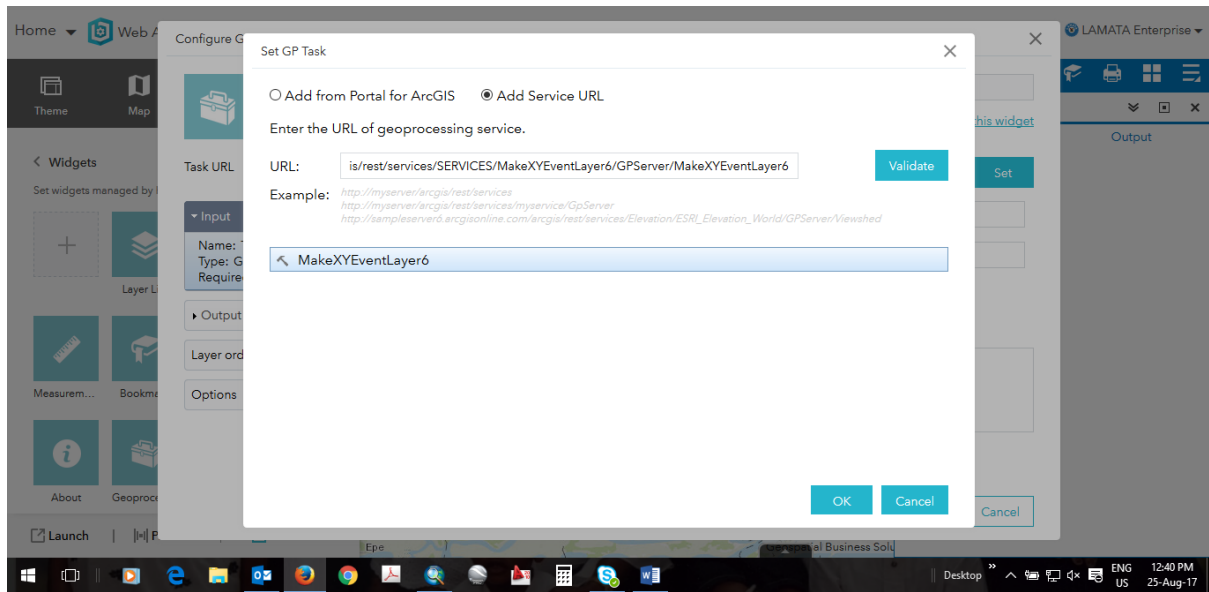
Publishing



Successfully published.

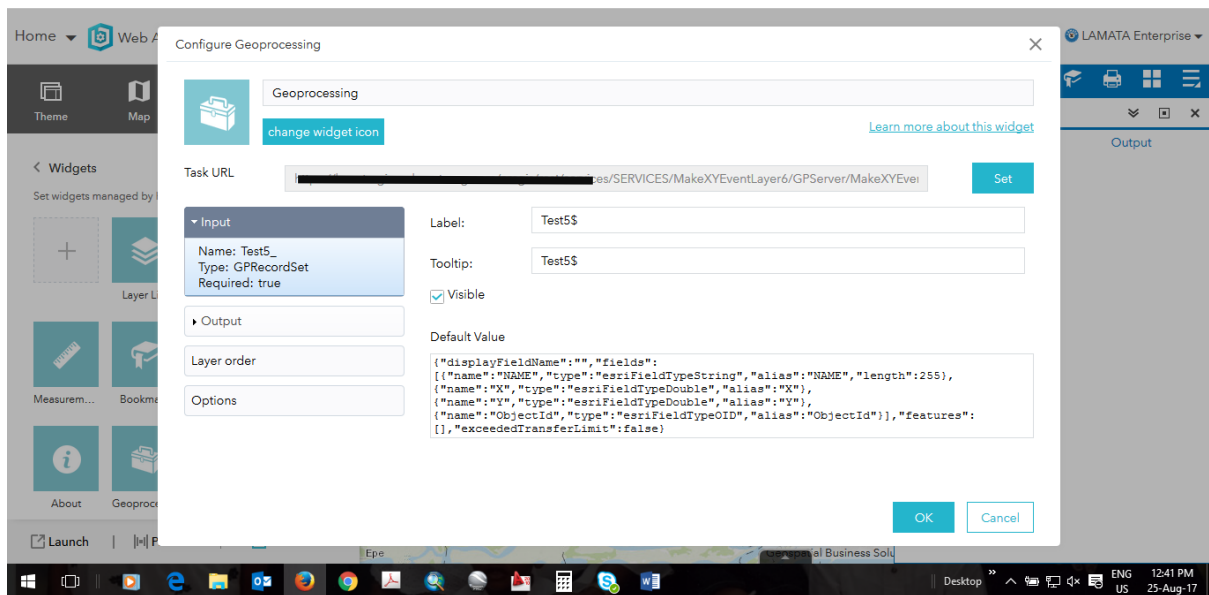


Added and Validated service url to geoprocessing tool in Portal for ArcGIS WebApp Builder



Result:

Input looks dodgy



Of course it would be empty.

