



The Strategic Impact of a Training Plan

Justin Kruiuzenga

An abstract graphic on the right side of the slide. It features a dark blue background with various colored geometric shapes (orange, green, yellow, red) and lines. A topographic map overlay is visible, showing contour lines and a cluster of orange dots. The text 'GIS INSPIRING WHAT'S NEXT' is overlaid on the graphic in white, uppercase, sans-serif font.

GIS
INSPIRING
WHAT'S
NEXT

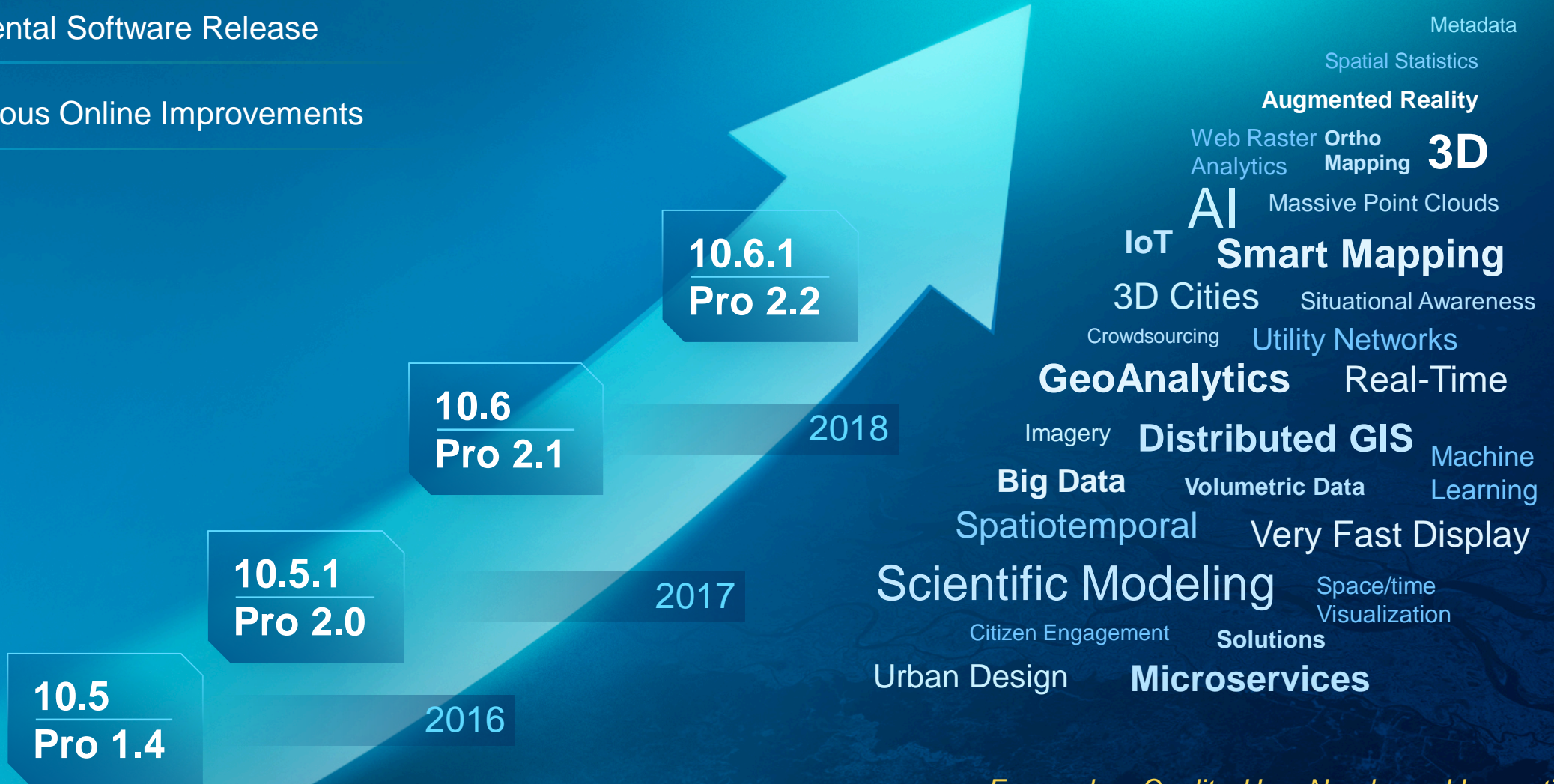
Training | Agenda

- ✓ Why Training?
- ✓ The Importance of Training Planning
- ✓ How Esri Training Services Supports your Organization

The Road Ahead

Incremental Software Release

Continuous Online Improvements



... Focused on Quality, User Needs, and Innovation

“The two most important components of a successful GIS are good planning and good people. Keep in mind, though, that all the planning in the world is useless if you do not have adequately trained people to operate your system.”

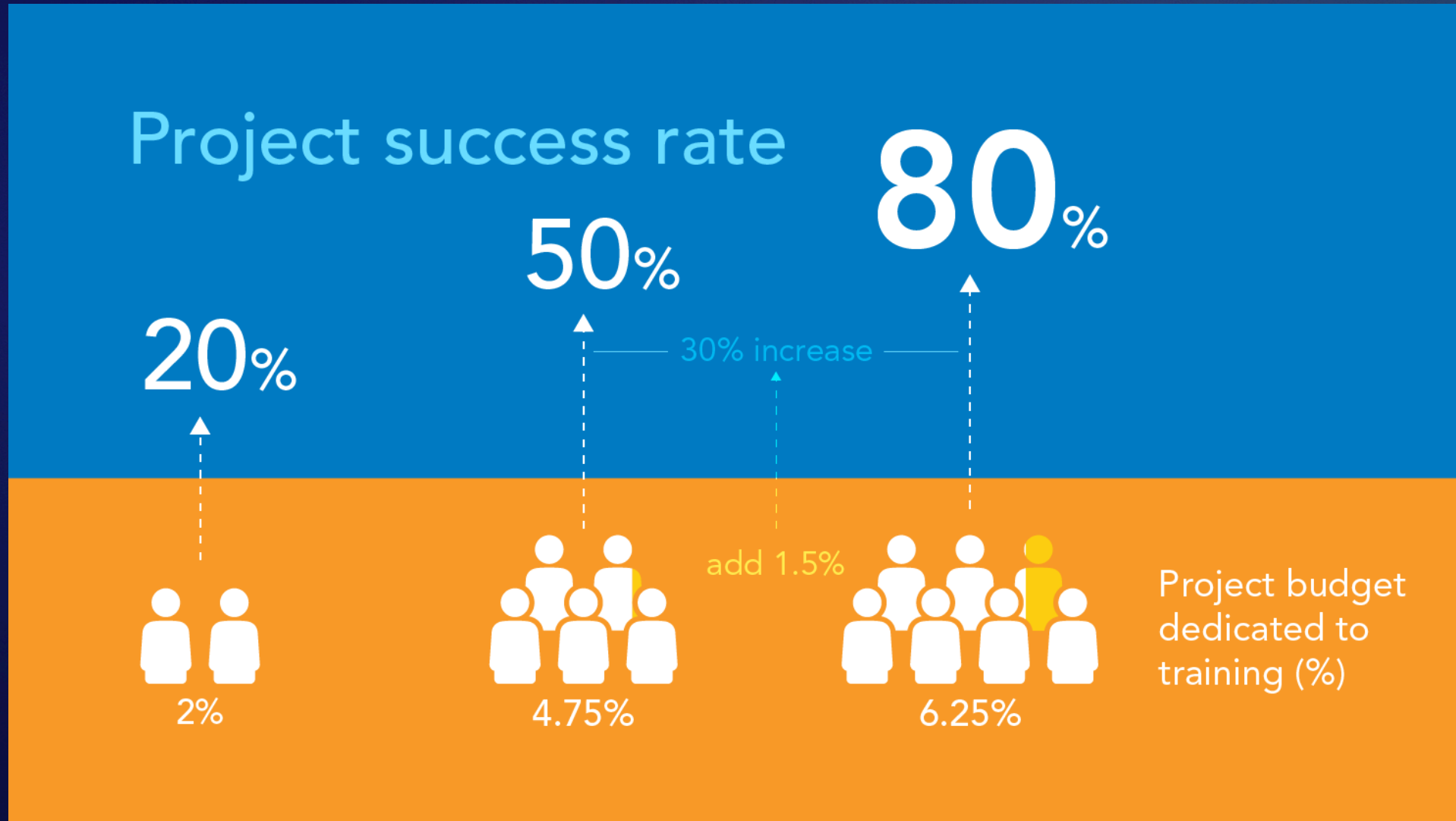
- R. Tomlinson, *Thinking About GIS*

Training for Your People

Focus on Your Most Valuable Asset



Training | Investment in Training and Project Success



Importance of Training Planning

The background is a dark teal color with a subtle grid pattern. In the top-left corner, there are several overlapping diagonal lines in shades of teal, blue, and red. In the bottom-right corner, there are several overlapping diagonal lines in shades of teal, blue, orange, and green, creating a sense of depth and movement.

Training Planning

Goals and Outcomes

- ✓ Understand business priorities and key initiatives
- ✓ Capture current workflows that leverage maps and GIS
- ✓ Understand current GIS deployments and related technical architectures
- ✓ Review future plans/ideas for maps and GIS



Support for Your Organization

The image features a dark teal background with a gradient. In the center, the text "Support for Your Organization" is written in a clean, white, sans-serif font. The background is decorated with abstract geometric elements: a cluster of overlapping lines in shades of teal and blue in the top-left corner; a faint, light-colored grid pattern in the bottom-right; and several thick, diagonal bars in orange, yellow, and light green in the bottom-right corner. The overall aesthetic is modern and professional.

Training Resources Available to Your Organization



- 500+ Resources
 - Live Instructor – online or onsite, public or private
 - Web Courses – self-paced, 24/7
 - Training Seminars – 45/60 min video presentations
- Create, copy, share, and assign learning plans

Certification

Validate Your Expertise

Validate Your Expertise

The Esri Technical Certification Program recognizes qualified individuals who are proficient in best practices for using Esri software.

Whether you're a GIS professional, an application developer, or an enterprise administrator, achieving an Esri Technical Certification can help you gain confidence, inspire trust, and stand out from the crowd.



New to Certification

Explore our exams to find the right certification for you.



Already Certified

Manage your certification information and add yourself to the directory.



Managers & Recruiters

A workforce certified in best practices for Esri technology is a strategic asset.



esri

THE
SCIENCE
OF
WHERE