



# Easy Ways to Bring 3D to Your Data

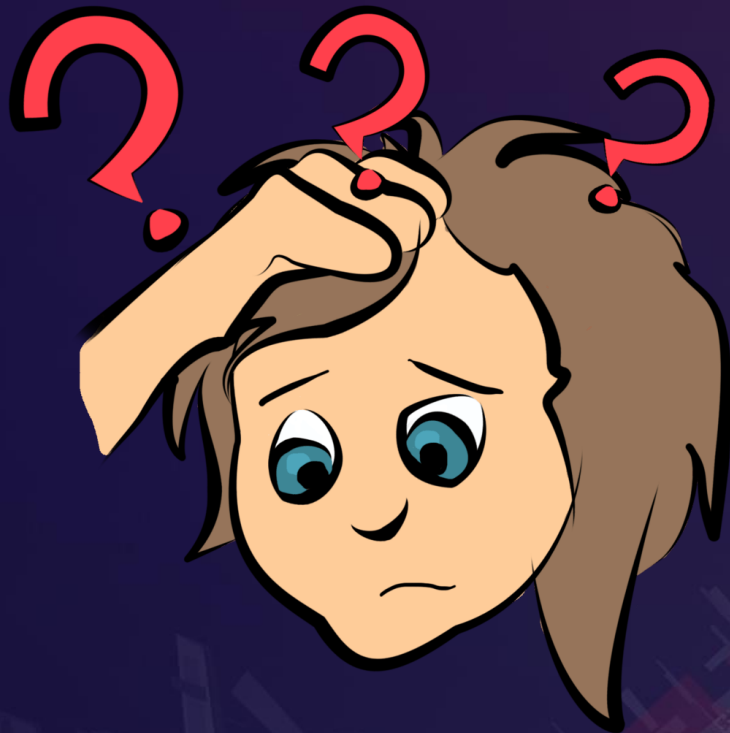
Lee Brinton

ESRI USER CONFERENCE



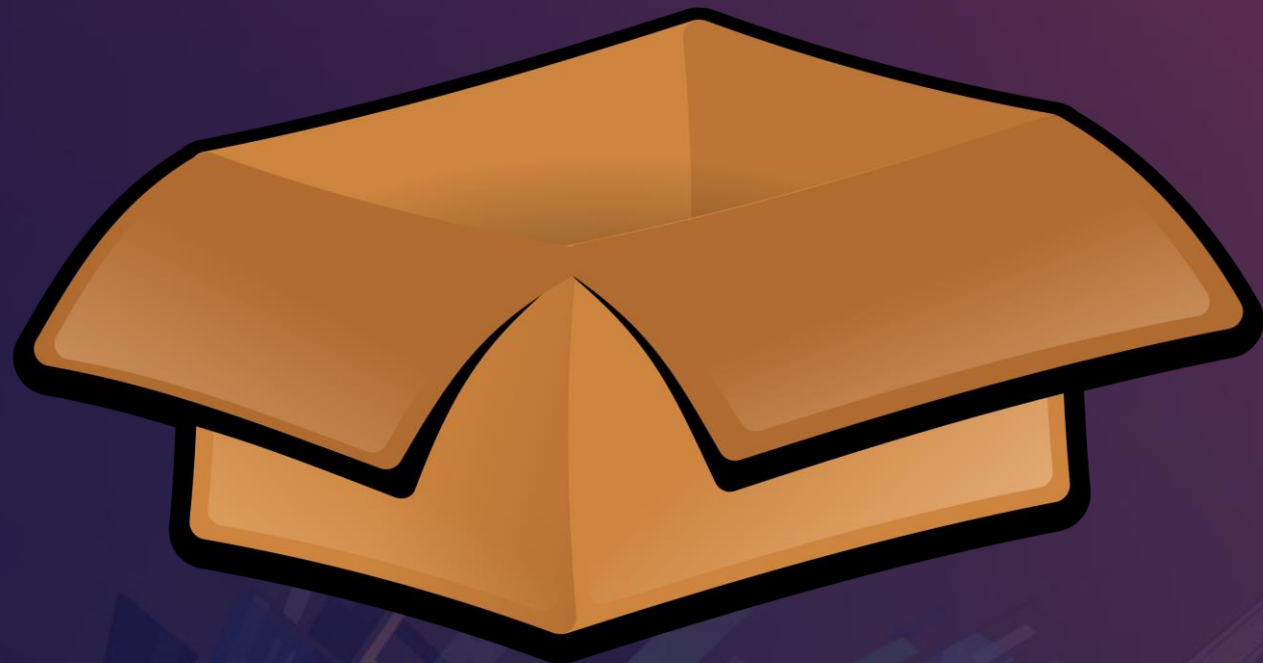
# But where to start?

So much stuff, but is it the right stuff?



It can be frustrating!! Where to start?

No Stuff



# Getting Started

Foundational Components

**DATA**

**SOFTWARE**

**TOOLS**

**SKILLS**

# DATA

What do you need?



- 2D

- Building footprints
- Vegetation

- 3D

- Building models
- LiDAR



**Attribution helps, but not necessary!**

# DATA

What do you need?

- **Data Collection**
  - Drone/Manned



- **Data Acquisition**
  - 3D models for purchase



# SOFTWARE

Which application does what?

**ArcGIS Pro** - Powerful 2D/3D desktop authoring and data management

**3D Analyst** - Rich analysis for advanced 3D workflows

**City Engine** - Advanced editing tool for urban designers

**Professional  
Desktop Tools**

**ArcGIS Earth** - Easy-to-use 3D data exploration for enterprise users

**ArcGIS Runtime** - Developer tools for 2D and 3D custom solutions

**Web AppBuilder & JS API** - Configurable and customizable web apps

**Apps,  
APIs,  
SDKs**

**ArcGIS Enterprise** - Scalable 2D/3D enterprise content distribution and geoprocessing

**ArcGIS Online** - Content and services for sharing ideas in 2D and 3D

**Web  
GIS**



# TOOLS

## ArcGIS for Solutions



## Local Government

ArcGIS for Local Government helps local governments leverage their geographic information and the ArcGIS Platform to improve government activities and enhance services provided to the general public.

[Get Started](#) | [Documentation](#) | [What's New](#) | [Join Community](#)



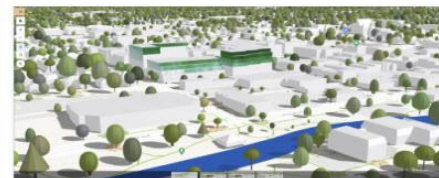
### Local Government 3D Basemaps

The Local Government 3D Basemaps is a set of ArcGIS Pro projects that can be used to author high-quality 3D scenes for your local government. These scenes are organized in different Levels of Detail (LOD) and derived from 2D operational data managed by a department or agency within a local government.



### Shadow Impact Analysis

Shadow Impact Analysis is a configuration of ArcGIS Pro that can be used by local government staff to evaluate the shadow impact of proposed or existing buildings on the surrounding community.



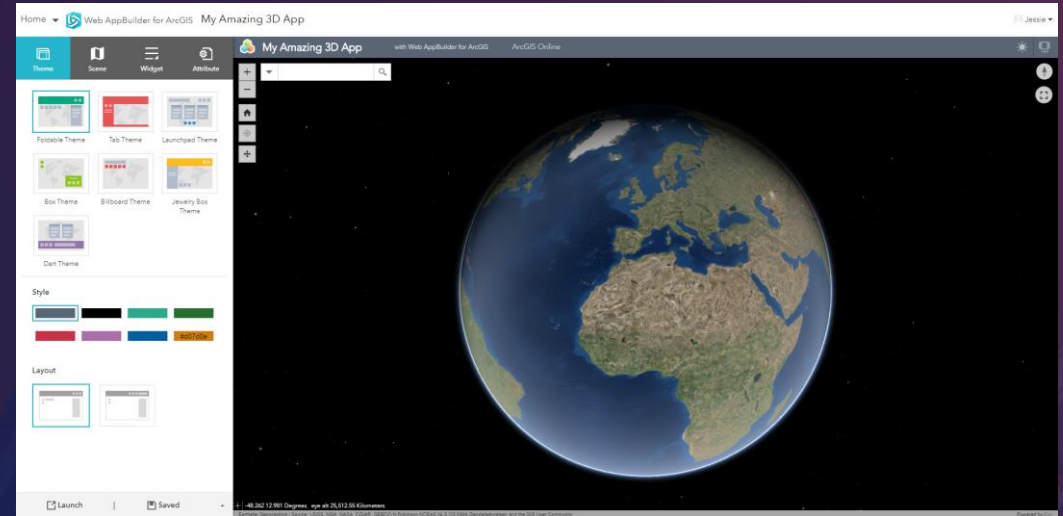
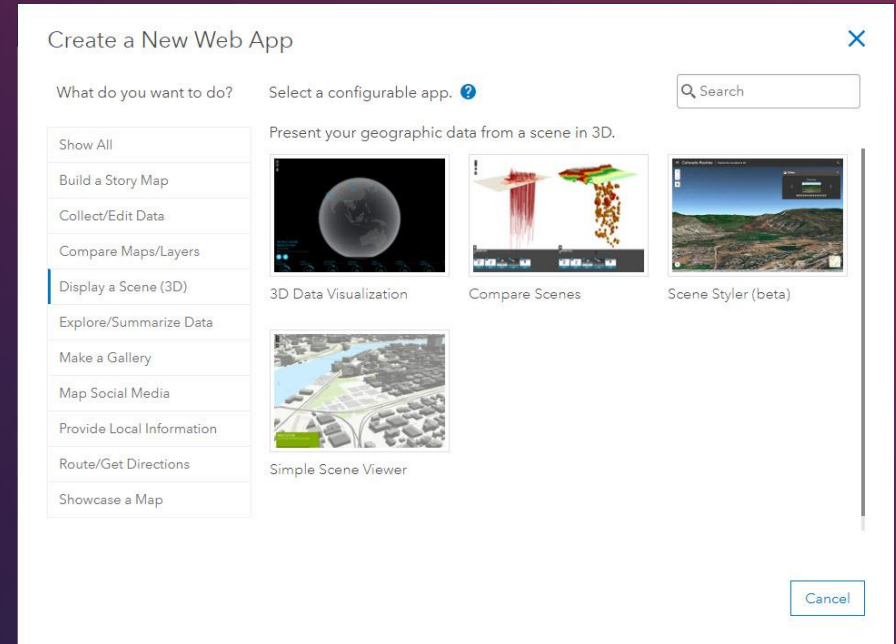
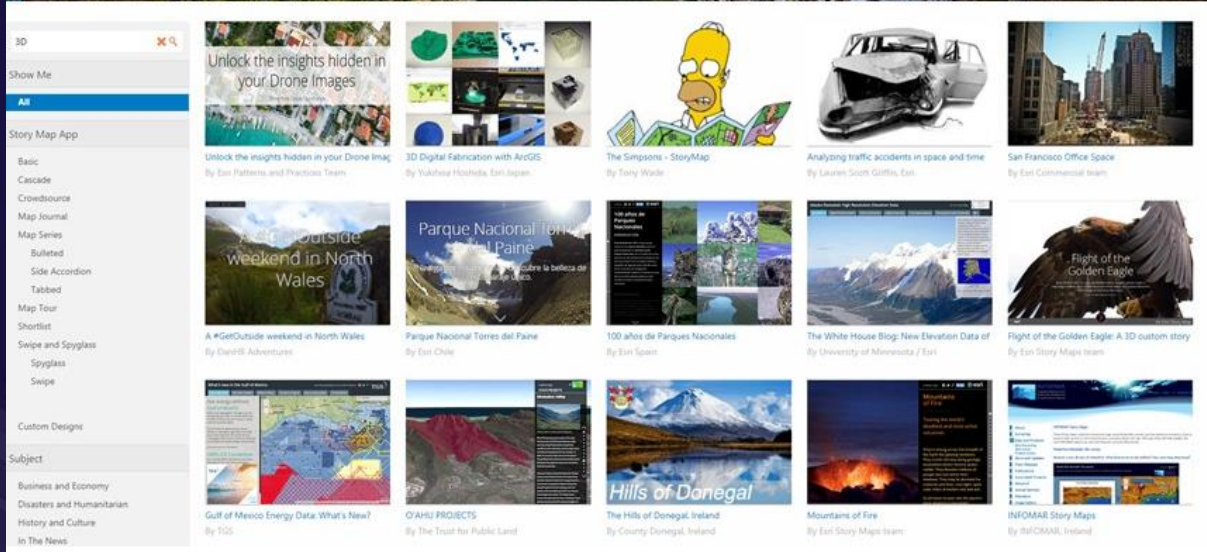
### Visibility Assessment

Visibility Assessment is a configuration of ArcGIS Pro that can be used by local governments to answer various visibility questions within the community.

[↑ Top](#)

# TOOLS

## Application Templates



# SKILLS

Enabling Your Workforce

Self-Led Training



Formal Training



Consulting



# 3D GIS Jumpstart

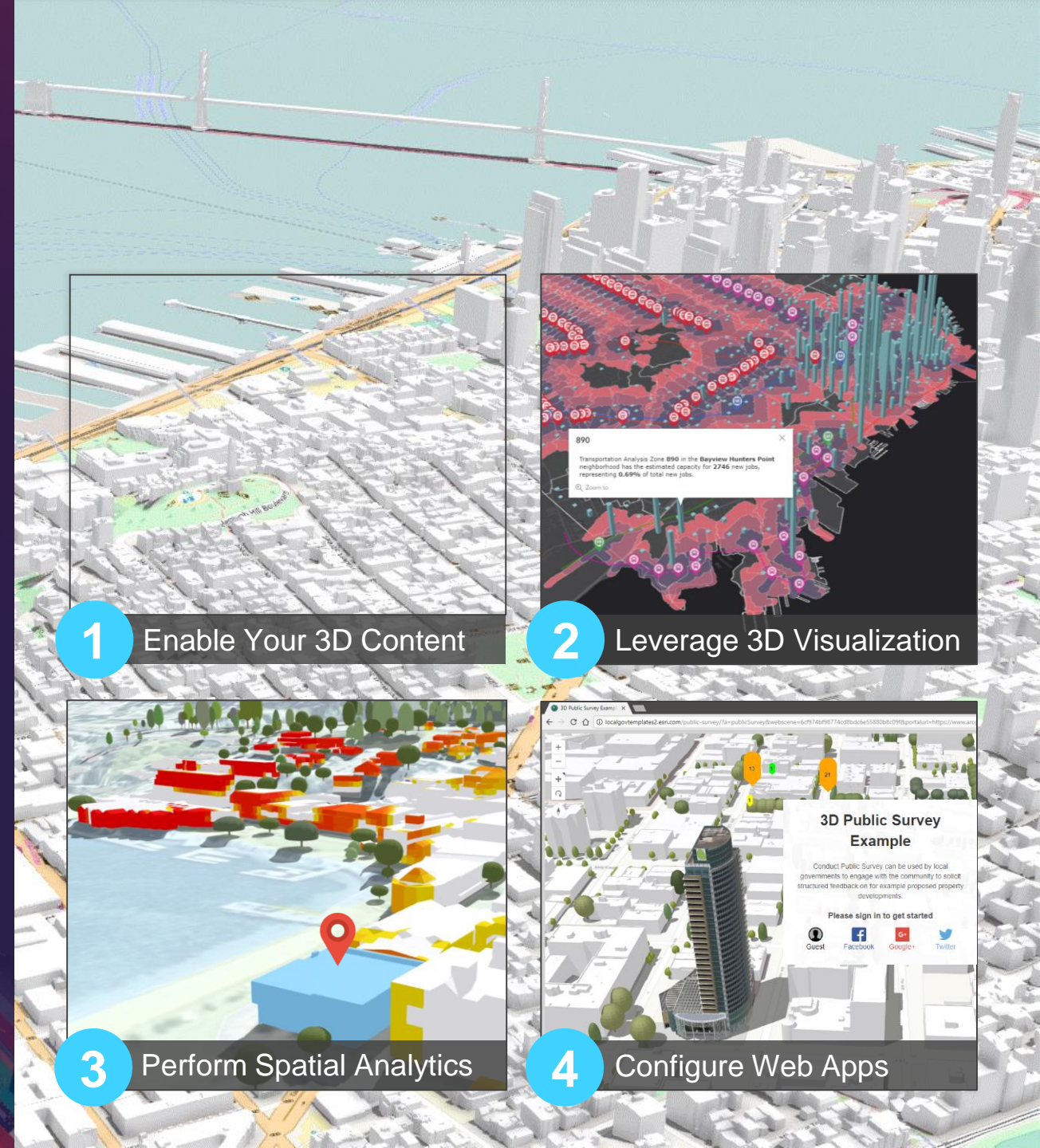
Organized as a phased set of workshop activities

Dive deep into working with 3D in ArcGIS

- Learn advanced 3D workflows and techniques
- Hands-on, one-on-one
- Your data in your environment
- Align with a current project for immediate ROI

Connect with an Expert: [3DConsulting@esri.com](mailto:3DConsulting@esri.com)

Learn more about Esri's strategy and vision for Enterprise 3D GIS [bit.ly/Enterprise\\_3D\\_GIS](http://bit.ly/Enterprise_3D_GIS)



1

Enable Your 3D Content

2

Leverage 3D Visualization

3

Perform Spatial Analytics

4

Configure Web Apps

# Complementary Resource Email

(no marketing)

- A copy of the presentation
- Links to resources
- Links to training materials



Or email me at:

[lbrinton@esri.com](mailto:lbrinton@esri.com)

# Questions?

Lee Brinton | ESRI

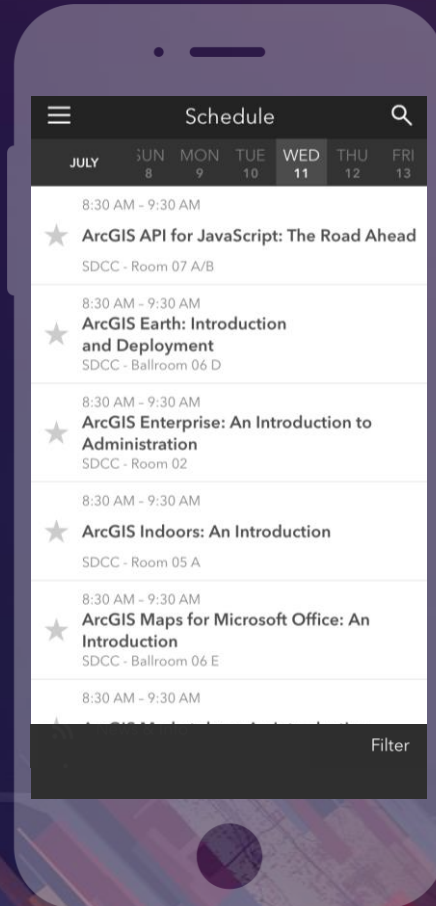


# Please Take Our Survey on the App

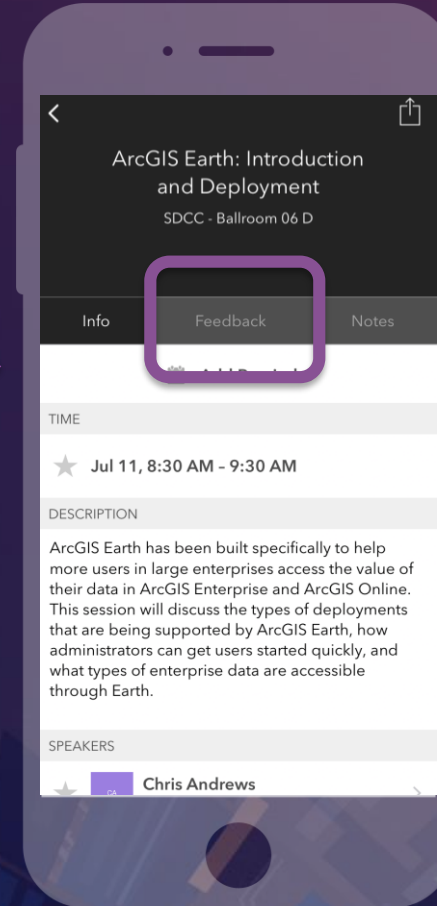
Download the Esri Events app and find your event



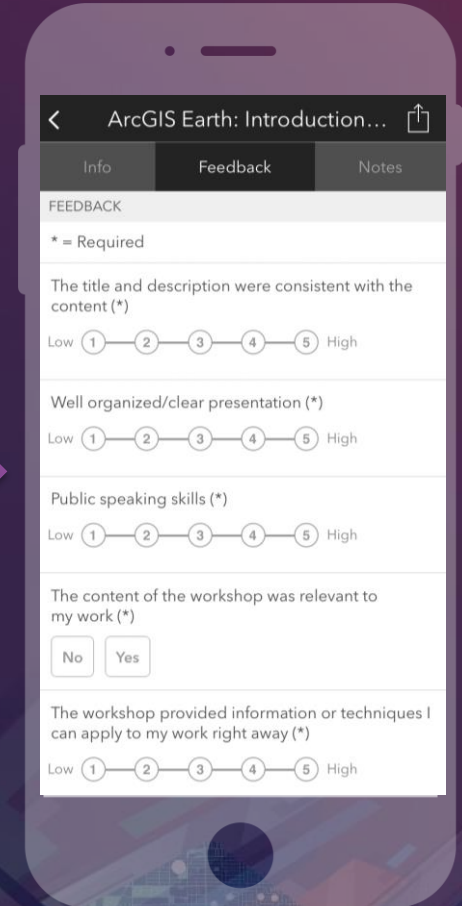
Select the session you attended



Scroll down to find the feedback section



Complete answers and select "Submit"





esri

THE  
SCIENCE  
OF  
WHERE