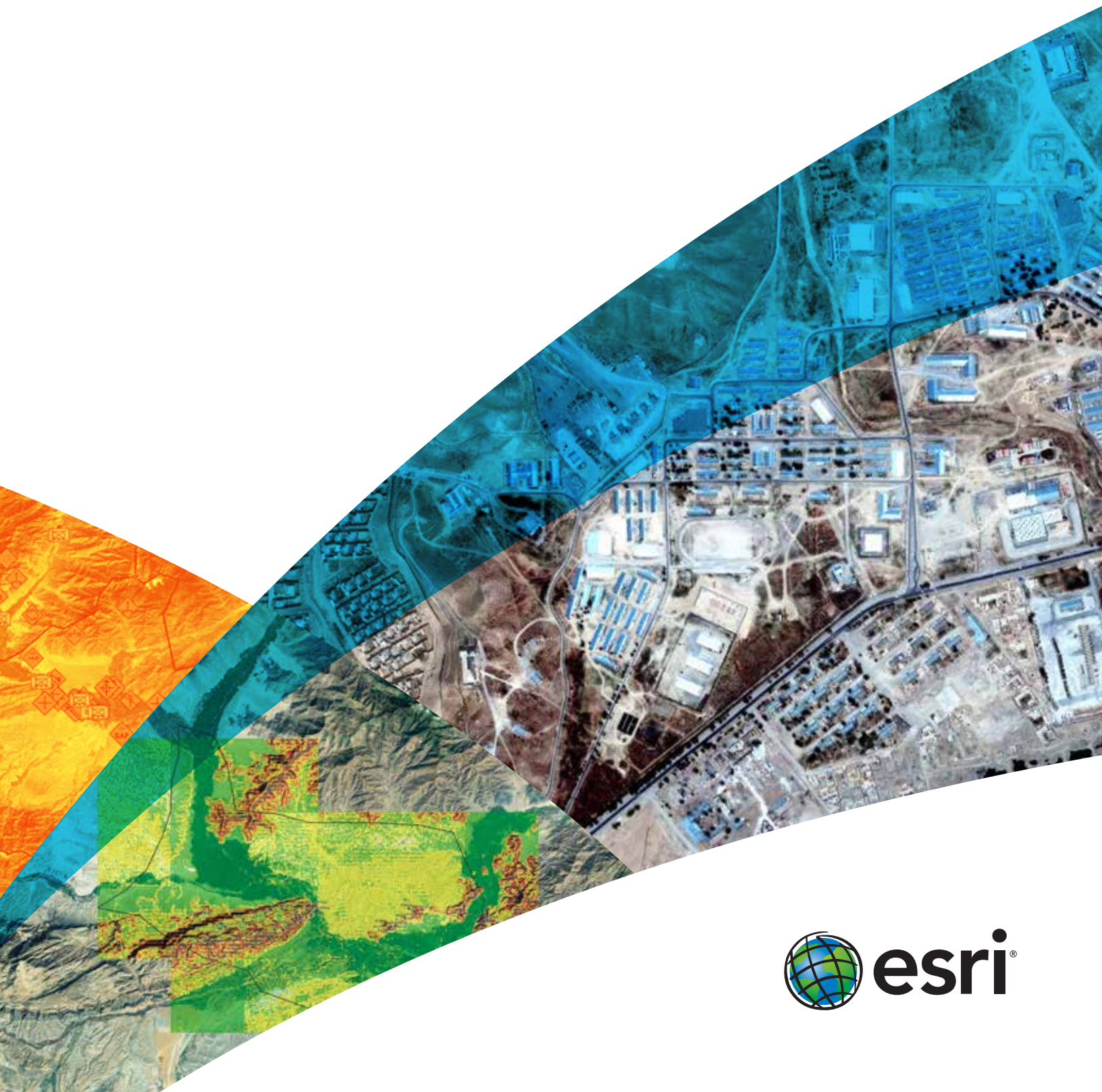


# Esri® Technology for National Intelligence

The Geospatial Platform for Multi-Intelligence Analysis



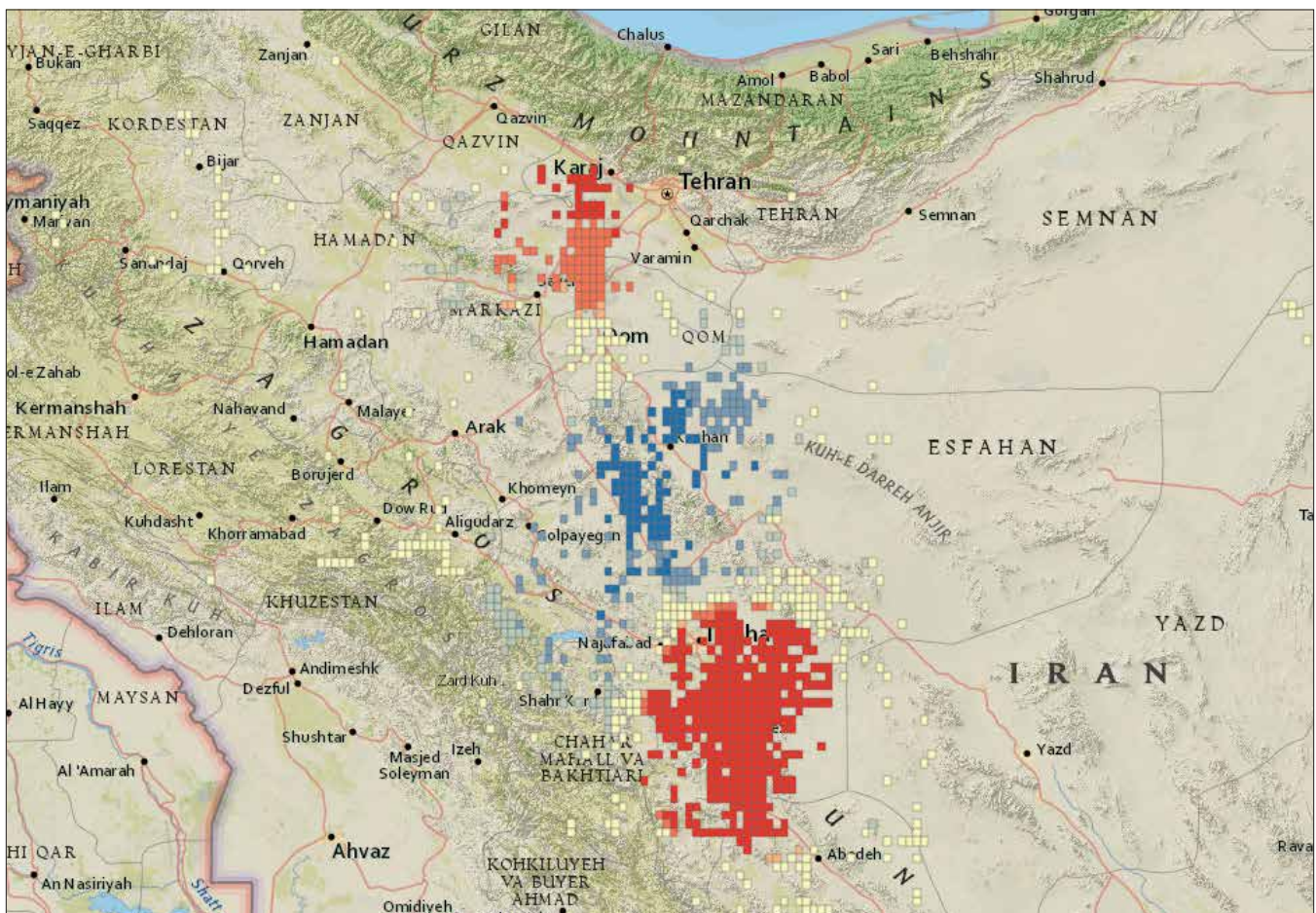
# Turn Data into Actionable Intelligence

National intelligence today involves monitoring a complex set of global threats, from cyberattacks to political and social uprisings. Esri® ArcGIS® software, the complete geospatial technology platform, works with all your multiple intelligence (Multi-INT) sources to produce timely, accurate, and actionable intelligence for responding to those threats.

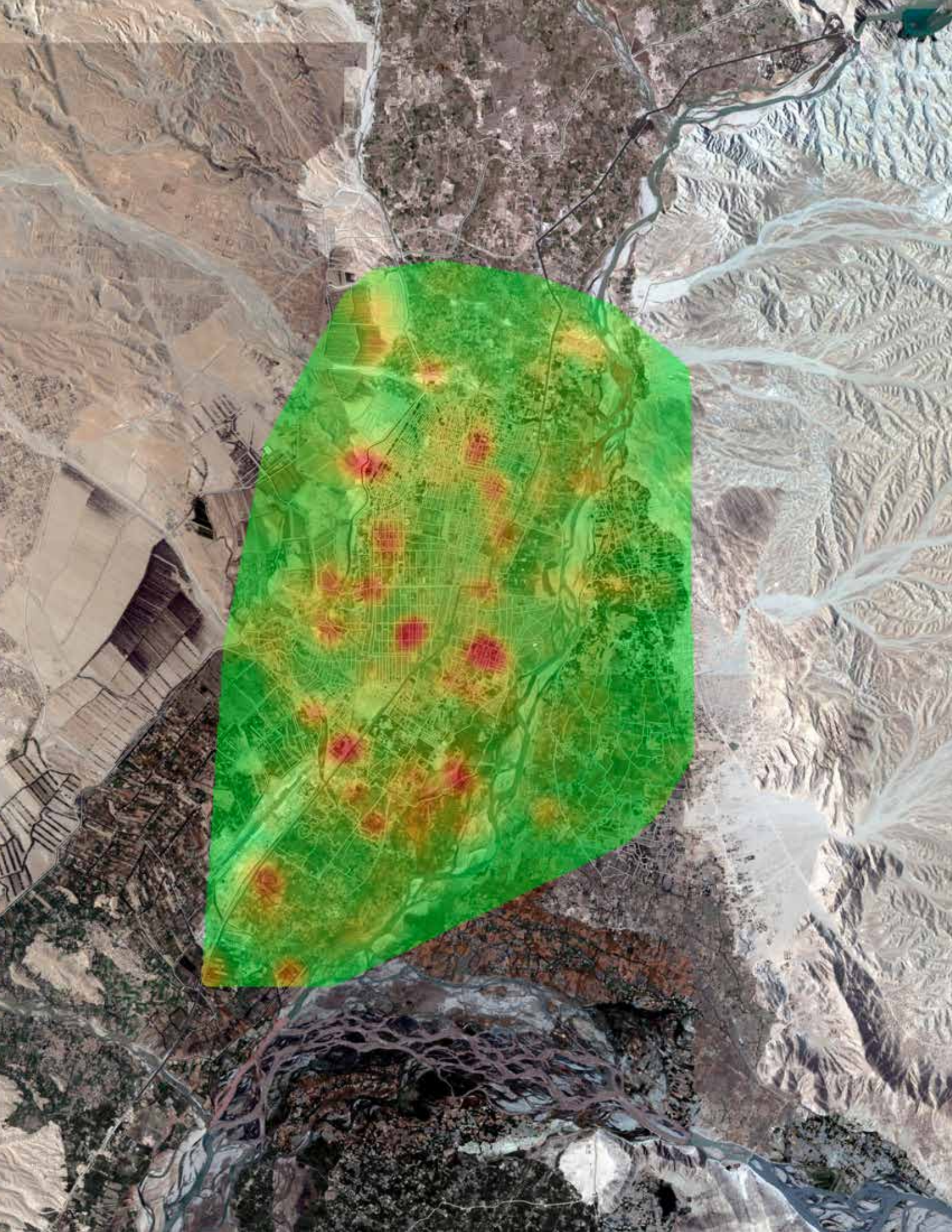
With ArcGIS, you can manage, analyze, and visualize data from your Multi-INT sources and bring it together into an easy-to-understand geographic picture. Seemingly unrelated data from satellite imagery, full-motion video, sensors, human intelligence, social media, and other sources is transformed to help determine options, set priorities, and develop orders.

You can use ArcGIS server, portal, desktop, mobile, and cloud software, templates, and services with your workflows to do the following:

- View assets and resources as you **task**, plan, and direct intelligence activities
- **Collect**, store, manage, and discover imagery and other geospatial information
- **Process** imagery and terrain data
- **Exploit**, analyze, and fuse multiple data types
- **Disseminate** and share data, products, and services

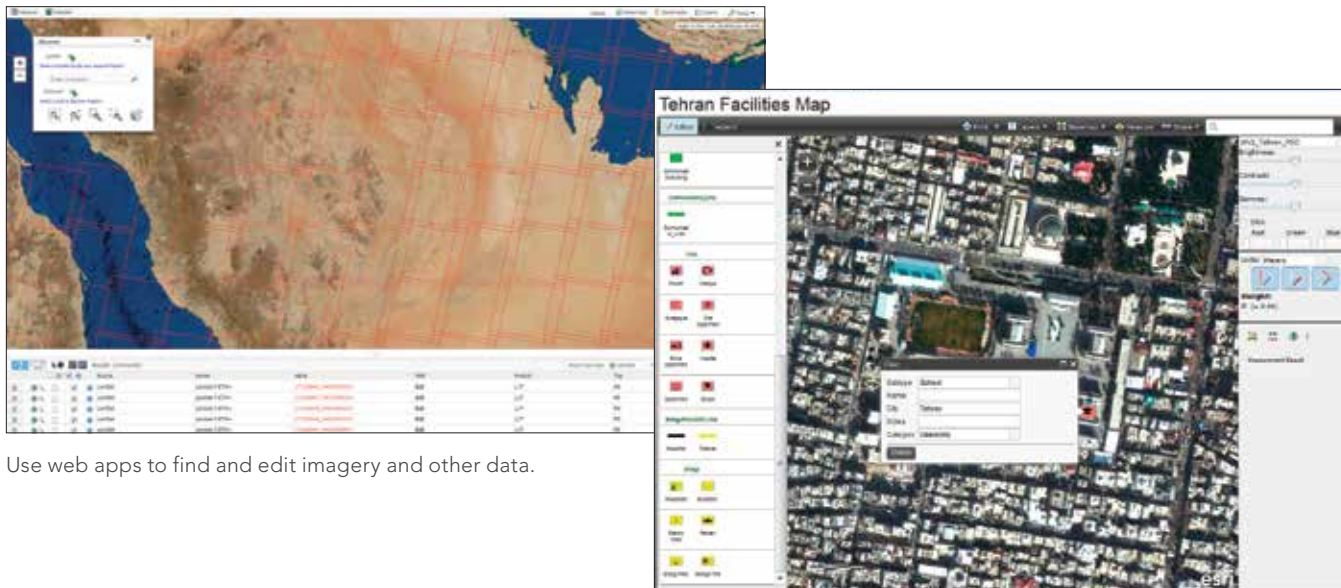


Use templates to improve workflows for analyzing incidents and patterns.



# Better Source Management

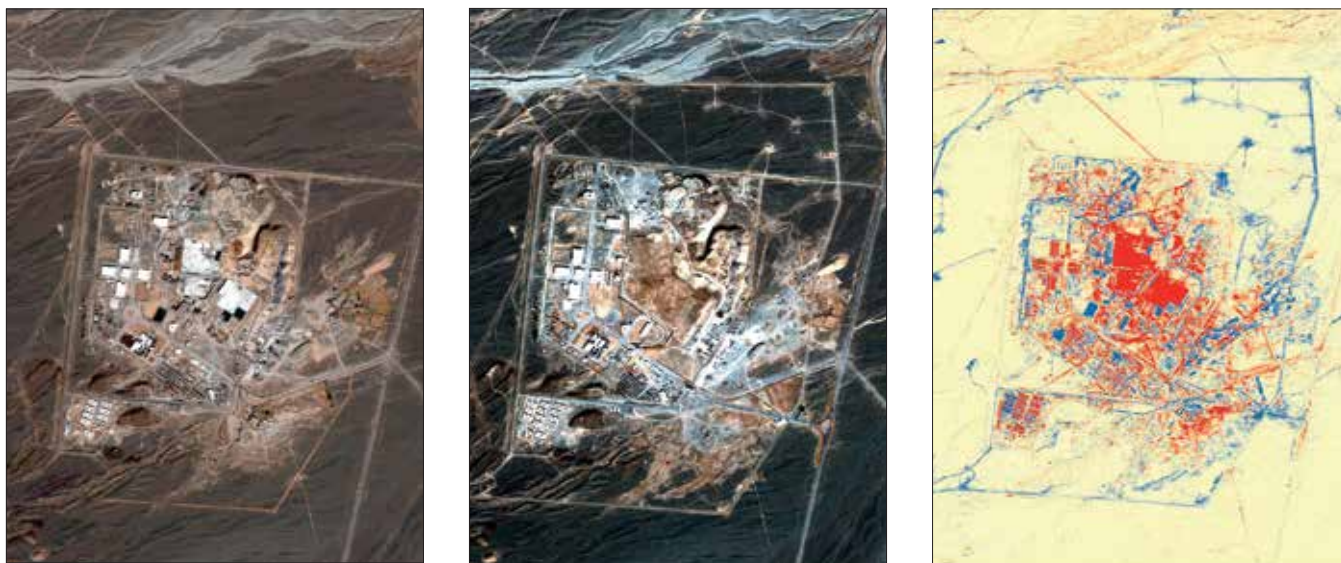
Manage data from a variety of sources. Collect, catalog, and share multiple data types including video, imagery, location information, and social media. Use tools and templates to maintain accurate, up-to-date information that you can search for, find, and quickly add to your maps, apps, and presentations.



Use web apps to find and edit imagery and other data.

# Powerful Analysis and Fusion

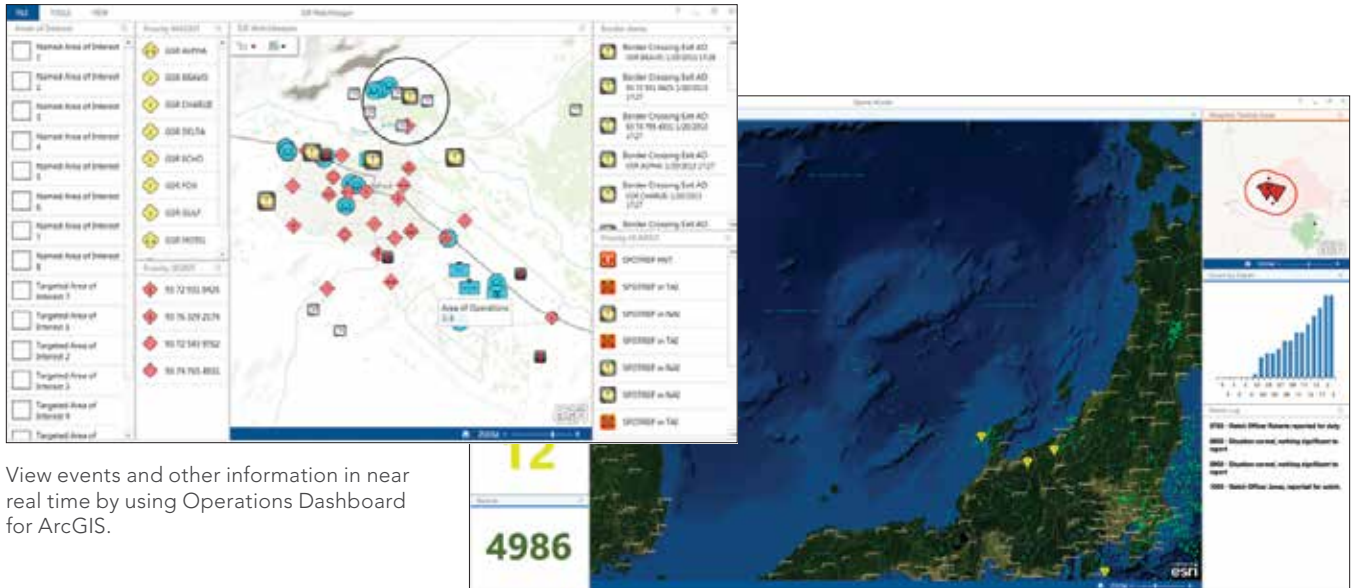
Analyze patterns, examine relationships, and determine probabilities using tools and templates. Fuse data from multiple sources to create change detection, incident analyses, and other intelligence information and products.



Create powerful image analysis products such as change detection.

# Relevant Situational Awareness

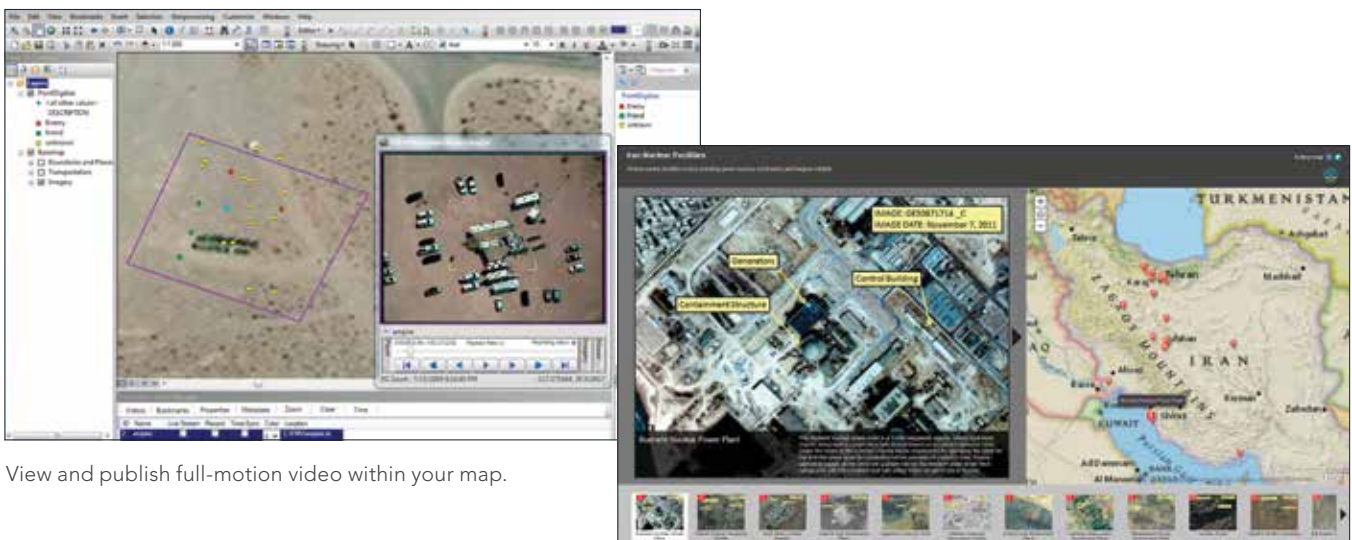
Track assets, monitor indicators and warnings, and assess battle damage. View information in a dashboard using an operational picture defined to fit your specific mission, with data synchronized in near real time to help you make faster and smarter decisions.



View events and other information in near real time by using Operations Dashboard for ArcGIS.

# Easy Information Sharing

Use secure web services; dashboards; office suite tools; and apps, such as story maps and mobile briefing books, to share maps and other intelligence information in daily briefs, threat analysis reports, and mission plans.



View and publish full-motion video within your map.

Share your information using interactive story maps.

[esri.com/intelligence](http://esri.com/intelligence)



Understanding our world.

Esri inspires and enables people to positively impact their future through a deeper, geographic understanding of the changing world around them.

Governments, industry leaders, academics, and nongovernmental organizations trust us to connect them with the analytic knowledge they need to make the critical decisions that shape the planet. For more than 40 years, Esri has cultivated collaborative relationships with partners who share our commitment to solving earth's most pressing challenges with geographic expertise and rational resolve. Today, we believe that geography is at the heart of a more resilient and sustainable future. Creating responsible products and solutions drives our passion for improving quality of life everywhere.



## Contact Esri

380 New York Street  
Redlands, California 92373-8100 USA

1 800 447 9778  
T 909 793 2853  
F 909 793 5953  
info@esri.com  
[esri.com](http://esri.com)

Offices worldwide  
[esri.com/locations](http://esri.com/locations)

Copyright © 2013 Esri. All rights reserved. Esri, the Esri globe logo, ArcGIS, @esri.com, and esri.com are trademarks, service marks, or registered marks of Esri in the United States, the European Community, or certain other jurisdictions. Other companies and products or services mentioned herein may be trademarks, service marks, or registered marks of their respective mark owners.

135638  
CRWNSM9/13sp