



ArcGIS® for Fire Service

Solutions and Applications

Solutions and Applications

ArcGIS® Platform

- ▶ Collection of solutions and applications for the Fire Service.
- ▶ Built on the ArcGIS platform.
- ▶ For any named user within ArcGISSM Online or Portal for ArcGIS.

Free | Esri supported

esriurl.com/FireSolutions





ArcGIS® for Fire Service

ArcGISSM Online for
Fire Departments

ArcGISSM Online for Fire Departments

ArcGIS for
Fire Service

ArcGIS Online Configuration

- ▶ Set up your mapping portal to support your mission.
- ▶ Leverage authoritative content to deliver information.
- ▶ Quickly create and deploy maps and apps.

Free | Esri supported

esriurl.com/FDOnline

esri[®]



ArcGIS® for Fire Service

Target Hazard Analysis

Target Hazard Analysis

ArcGIS® for Desktop

- ▶ Identify hazardous areas in your community.
- ▶ Analyze hazard scenarios.
- ▶ Mitigate threats to life and property.

Free | Esri supported

esriurl.com/FDTargetHaz





ArcGIS® for Fire Service

Fire Hydrant Inspection

Fire Hydrant Inspection

ArcGISSM Online and ArcGIS[®] for Server

- ▶ **Monitor fire hydrant inspections.**
- ▶ **Assign inspections to stations.**
- ▶ **Increase operational awareness.**

Free | Esri supported

esriurl.com/FDHydrant



A topographic map of Naperville, Illinois, showing various streets and landmarks. The map is divided into several colored zones: green for residential areas, purple for schools, and red for parks or recreation. A red heart icon with a white cross is placed on the map, indicating the location of an Automated External Defibrillator (AED).

Naperville

Saint Timothy
Lutheran
Church

Mill
School

ArcGIS® for Fire Service

Automated External Defibrillator (AED) Inventory

Cress
Creek
Square

Windscape
Village

Naperville
North High
School

Preserve
Cress
Creek

Waterford
Greens

Automated External Defibrillator (AED) Inventory

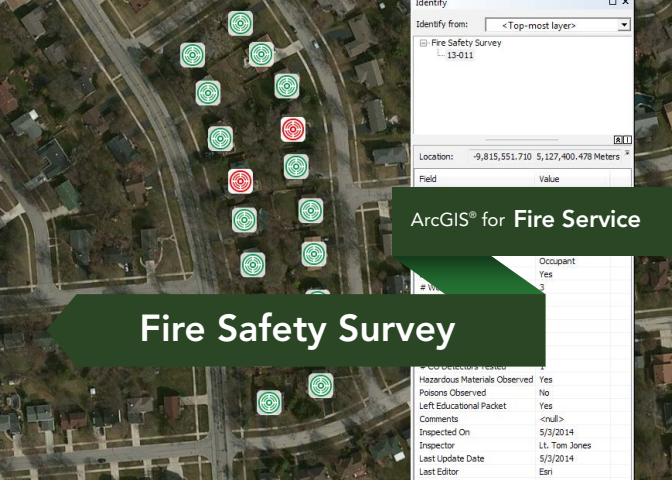
ArcGISSM Online and ArcGIS[®] for Server

- ▶ Use Collector for ArcGIS to inventory AEDs in your community.
- ▶ Publish feature services directly to your organization and the public.
- ▶ Increase operational awareness.

Free | Esri supported

esriurl.com/FDAED





Identify from:

Fire Safety Survey
 13-011

Location: -9,815,551.710 5,127,400.478 Meters

Field	Value
-------	-------

ArcGIS® for Fire Service

Fire Safety Survey

Occupant	Yes
# Workers	3
# CO Detectors Tested	1
Hazardous Materials Observed	Yes
Poisons Observed	No
Left Educational Packet	Yes
Comments	<null>
Inspected On	5/3/2014
Inspector	Lt. Tom Jones
Last Update Date	5/3/2014
Last Editor	Esri

Fire Safety Survey

ArcGISSM Online and ArcGIS[®] for Server

- ▶ **Publish feature services directly to your organization.**
- ▶ **Identify fire safety issues and improve the safety of residents.**
- ▶ **Increase fire safety awareness.**

Free | Esri supported

esriurl.com/FDSafety



Edward Hospital
and Medical Center
Complex - 2

775

Brom

310

230

720

American
Nursing Home
200

107

10

Spalding Dr

99

S Washington

750

760

770

802

Edwards Medical
North Parking
PLAN-3

North
Parking -
4 levels

807

Edwards Medical
Education Building
PLAN-1

Edwards Medical
Office Building
PLAN-7

Cancer
Center

Edward Hospital
Office Building

Edwards Medical
Office Building
PLAN-2

7al

Edward Hospital
Medical Center
PLAN-6

Preincident Planning

ArcGIS® for Fire Service

Osker Dr

120

105

101

815

Our Saviour's
Evan Lutheran
Church

808

109

S Washington

Preincident Planning

ArcGIS® for Desktop

- ▶ **Collect and manage preincident data.**
- ▶ **Integrate building or site information to enhance situational awareness.**
- ▶ **Analyze emergency response preparedness.**

Free | Esri supported

esriurl.com/FDPreIncident





Community Addressing

ArcGIS® for Fire Service

Community Addressing

ArcGISSM Online and ArcGIS[®] for Server

- ▶ **Allows the public to review and submit new address or contact information.**
- ▶ **Improves records and data management.**
- ▶ **Integrates and improves public feedback on data records.**

Free | Esri supported

esriurl.com/FDComAdd





ArcGIS® for Fire Service

Address Data Management

Address Data Management

ArcGIS® for Desktop

- ▶ Streamline the automation of road centerlines, site and mailing address, and facility information.
- ▶ Easily locate addresses by publishing locators in ArcMap™.
- ▶ Optimize address data management.

Free | Esri supported

esriurl.com/FDAddDataMan





ArcGIS® for Fire Service

Fire Station Wall Map

04 24

Fire Station Wall Map

ArcGIS® for Desktop

- ▶ Produce large-format wall maps.
- ▶ Streamline station map production.
- ▶ Leverage authoritative data.

Free | Esri supported

esriurl.com/FSWallMap





ArcGIS® for Fire Service

Fire Run Book

Fire Run Book

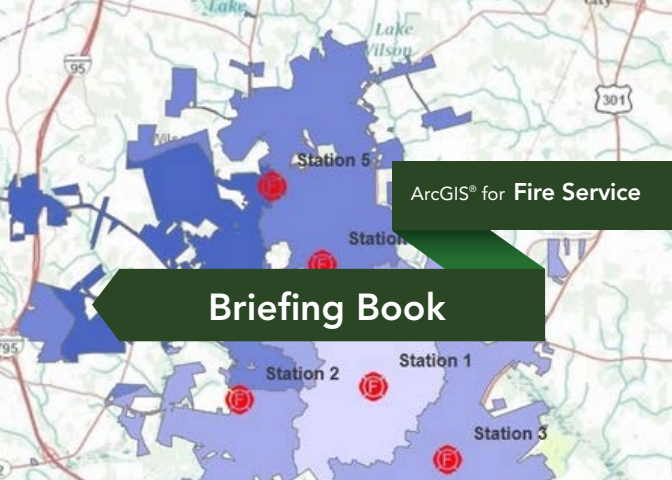
ArcGIS® for Desktop

- ▶ Produce fire run books.
- ▶ Streamline map book production.
- ▶ Leverage authoritative hydrant data.

Free | Esri supported

esriurl.com/FireRunBk





ArcGIS® for Fire Service

Briefing Book

Briefing Book

ArcGISSM Online and ArcGIS[®] for Server

- ▶ **Create map-based briefings and reports.**
- ▶ **View interactive ArcGIS map content.**
- ▶ **Deploy on your web server.**

Free | Esri supported

esriurl.com/FireBriefing





ArcGIS® for Fire Service

Collector for ArcGIS

Collector for ArcGIS®

ArcGISSM Online and Portal for ArcGIS

- ▶ Collect data in the field using your mobile device.
- ▶ Share back to your organizational portal.
- ▶ Work online or download your maps and work offline.

Free | Esri supported

esriurl.com/FDCollector

