

# Esri® Solutions for National Security



# A Better Approach to National Security

With ever-increasing tensions in the world, government agencies give national security top priority in today's interrelated, complex global environment. National intelligence, emergency management, law enforcement, defense, public health, and government agency operators are being tasked to work together and cooperate more closely. Multiple agencies from across the government and private sector must work together like never before.

Esri uniquely supports national security through its expertise, software, and services, partnering with you to succeed in applying geospatial intelligence to your mission. Esri provides a complete system to plan, prepare, and maintain situational awareness at all jurisdiction levels.

## A Complete Common Operating Platform

Esri® software works on the desktop, within the cloud, out in the field, or through mission-based viewers over an enterprise network. The result is a complete common operating platform that connects local, regional, national, and international agencies.

Esri provides a complete geographic information system (GIS) platform for the following:

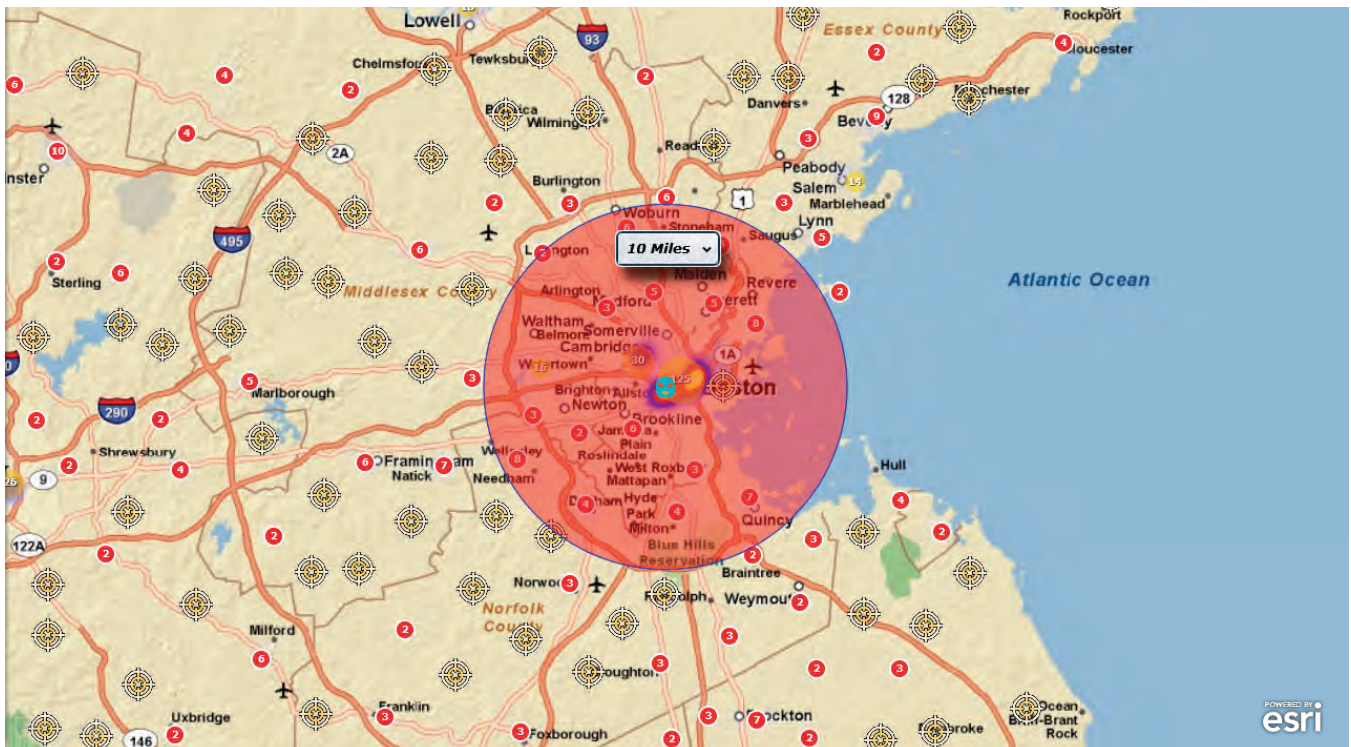
- Planning and analysis
- Data management
- Situational awareness
- Field mobility
- Community engagement

## Shared Capabilities for Every Mission

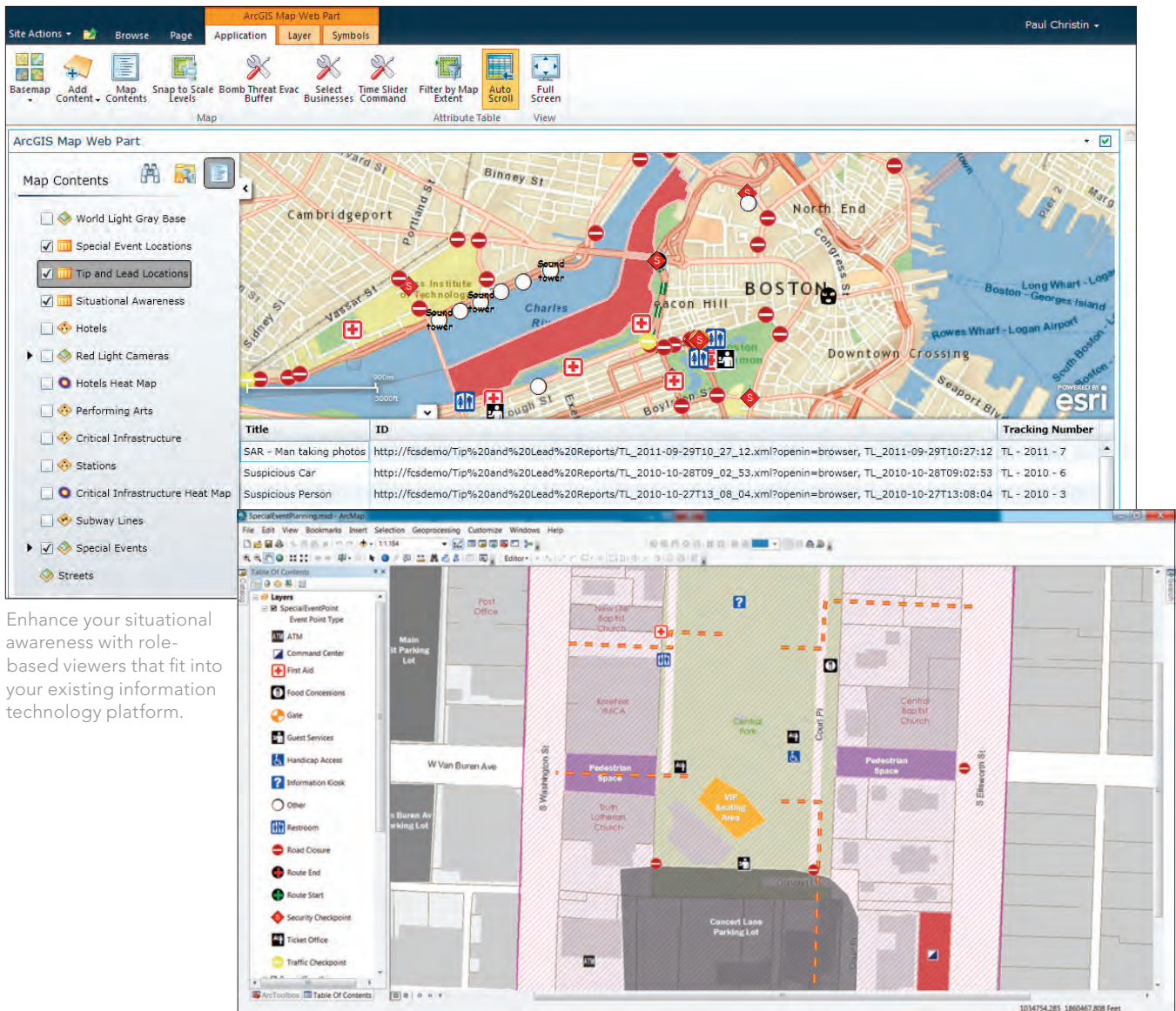
The Esri platform supports all stakeholders in managing information, improving the government's ability to collaborate, communicate, and rapidly discover trends. It also enables you to take action across intelligence, command, control, and response groups.

## National Intelligence

Esri provides national intelligence agencies with the platform for effectively gathering data from all types of sensors and mobile devices to validate and record information in real time. Analysts can identify patterns and trends posing security threats, improving the decision-making process.



Space-time hot spot tools support planning and analysis capabilities for doing more with your suspicious activity reports.



Enhance your situational awareness with role-based viewers that fit into your existing information technology platform.

Applications and workflows are designed to provide data management to support special event planning across multiple agencies and on any device.

## Defense

In many parts of the world, the military is the first to respond to disasters and other national security events. Having a common platform to track assets, weather, and incidents and to collaborate with other agencies is necessary for the success of national security missions.

## Security and Law Enforcement

National security and law enforcement agencies manage volumes of disparate data and transform it into actionable information. Esri gives you a powerful integration platform using location as the common denominator to access all types of disparate data.

## Emergency Management

You can accurately assess vulnerabilities and determine potential impacts to critical infrastructure, population centers, and other community values.

## National Health

Esri helps national health organizations improve field data collection and reporting and support disease surveillance and analysis. Interactive, easy-to-read Esri maps improve communication with decision makers and the public.

Learn more about GIS for national security at

[esri.com/nationalsecurity](http://esri.com/nationalsecurity)



Understanding our world.

Esri inspires and enables people to positively impact their future through a deeper, geographic understanding of the changing world around them.

Governments, industry leaders, academics, and nongovernmental organizations trust us to connect them with the analytic knowledge they need to make the critical decisions that shape the planet. For more than 40 years, Esri has cultivated collaborative relationships with partners who share our commitment to solving earth's most pressing challenges with geographic expertise and rational resolve. Today, we believe that geography is at the heart of a more resilient and sustainable future. Creating responsible products and solutions drives our passion for improving quality of life everywhere.



## Contact Esri

380 New York Street  
Redlands, California 92373-8100 USA

1 800 447 9778  
T 909 793 2853  
F 909 793 5953  
info@esri.com  
[esri.com](http://esri.com)

Offices worldwide  
[esri.com/locations](http://esri.com/locations)

Copyright © 2012 Esri. All rights reserved. Esri, the Esri globe logo, ArcGIS, ArcToolbox, ArcMap, @esri.com, and esri.com are trademarks, service marks, or registered marks of Esri in the United States, the European Community, or certain other jurisdictions. Other companies and products or services mentioned herein may be trademarks, service marks, or registered marks of their respective mark owners.