

Esri® Technology for **Emergency Management**

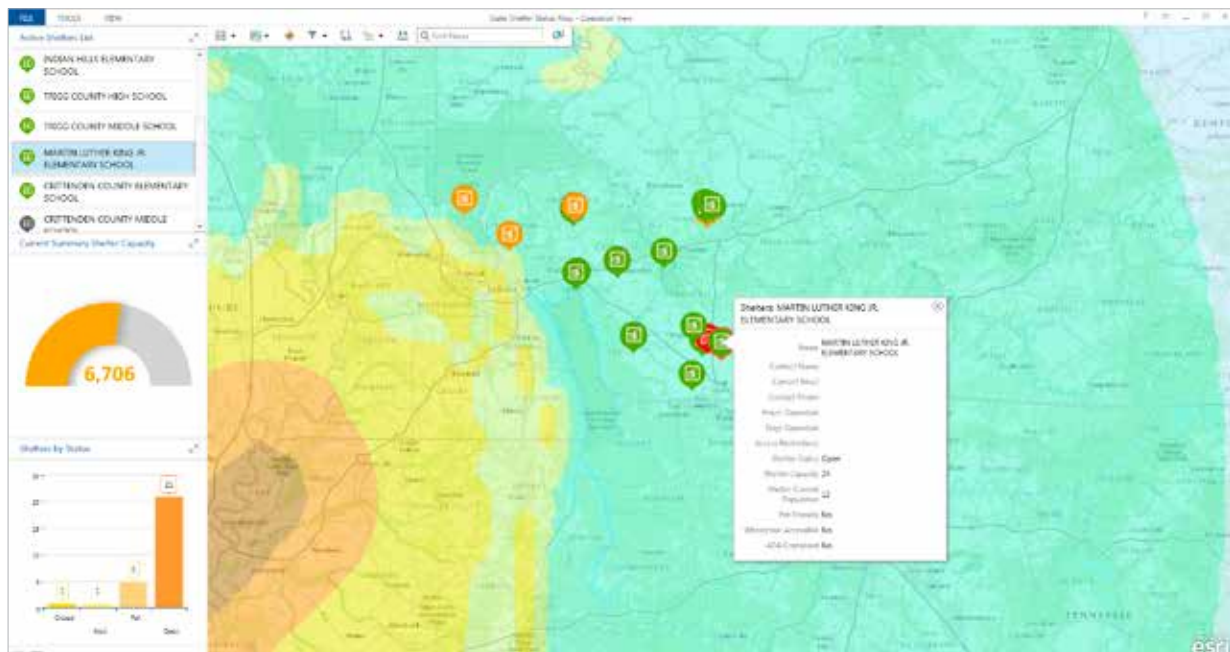


Be Prepared for Any Challenge

Software, Services, and Expertise

Every day you are faced with increasingly complex challenges. Esri® uniquely supports emergency management through its software, services, and expertise. Agencies around the world successfully deploy Esri solutions for all types of disasters. You can use high-powered location analytics and visualization to build a foundation of preparedness that supports better decisions in mission-critical environments. With Esri's proven track record, you can achieve cost savings through greater operational efficiency and meet those challenges every day.

This adds up to a more effective response and opens up a global community addressing similar challenges.



Support for Every Mission

You'll be able to effectively capture and manage mission specific information to assess vulnerabilities and mitigate threats, foreign and domestic, natural or man-made.

Esri can improve organizational workflows for:

- Planning
- Logistics
- Operations
- Command
- Public Information





A Complete Platform

Your challenges require more than a common operating picture—you need a platform. Esri's platform gives you scalable technology that works on the desktop, within the cloud, or in the field. It delivers relevant content and tools when and where they are needed using simple applications. Enable collaboration and information sharing across your organization and among your partners at all levels for a more coordinated effort.

A Global Community

Esri is the geographic information system (GIS) market leader. Esri software is in use every day around the world by agencies preparing for and responding to disasters of all sizes. You'll be able to immediately connect with a global network of partners and users to share, collaborate, and learn. You'll also have access to best practices and proven strategies that can help you achieve mission success under any circumstance.



Learn more about implementing the Esri Platform for Emergency Management at esri.com/emergencymanagement.



Understanding our world.

Esri inspires and enables people to positively impact their future through a deeper, geographic understanding of the changing world around them.

Governments, industry leaders, academics, and nongovernmental organizations trust us to connect them with the analytic knowledge they need to make the critical decisions that shape the planet. For more than 40 years, Esri has cultivated collaborative relationships with partners who share our commitment to solving earth's most pressing challenges with geographic expertise and rational resolve. Today, we believe that geography is at the heart of a more resilient and sustainable future. Creating responsible products and solutions drives our passion for improving quality of life everywhere.



Contact Esri

380 New York Street
Redlands, California 92373-8100 USA

1 800 447 9778
T 909 793 2853
F 909 793 5953
info@esri.com
esri.com

Offices worldwide
esri.com/locations

Copyright © 2013 Esri. All rights reserved. Esri, the Esri globe logo, @esri.com, and esri.com are trademarks, service marks, or registered marks of Esri in the United States, the European Community, or certain other jurisdictions. Other companies and products or services mentioned herein may be trademarks, service marks, or registered marks of their respective mark owners.