

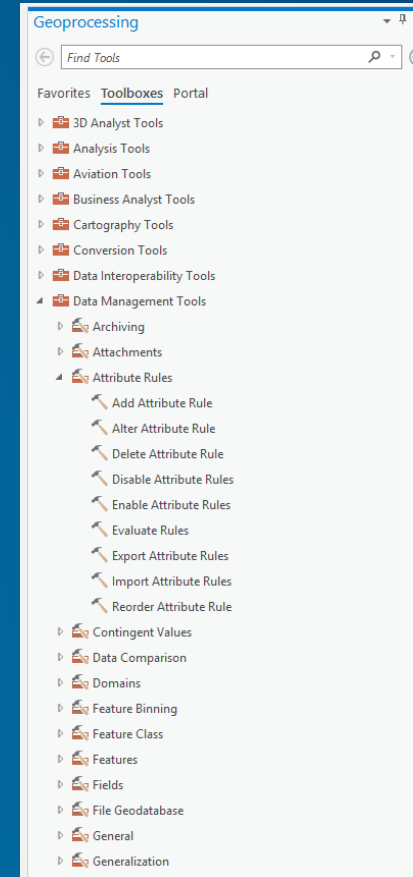
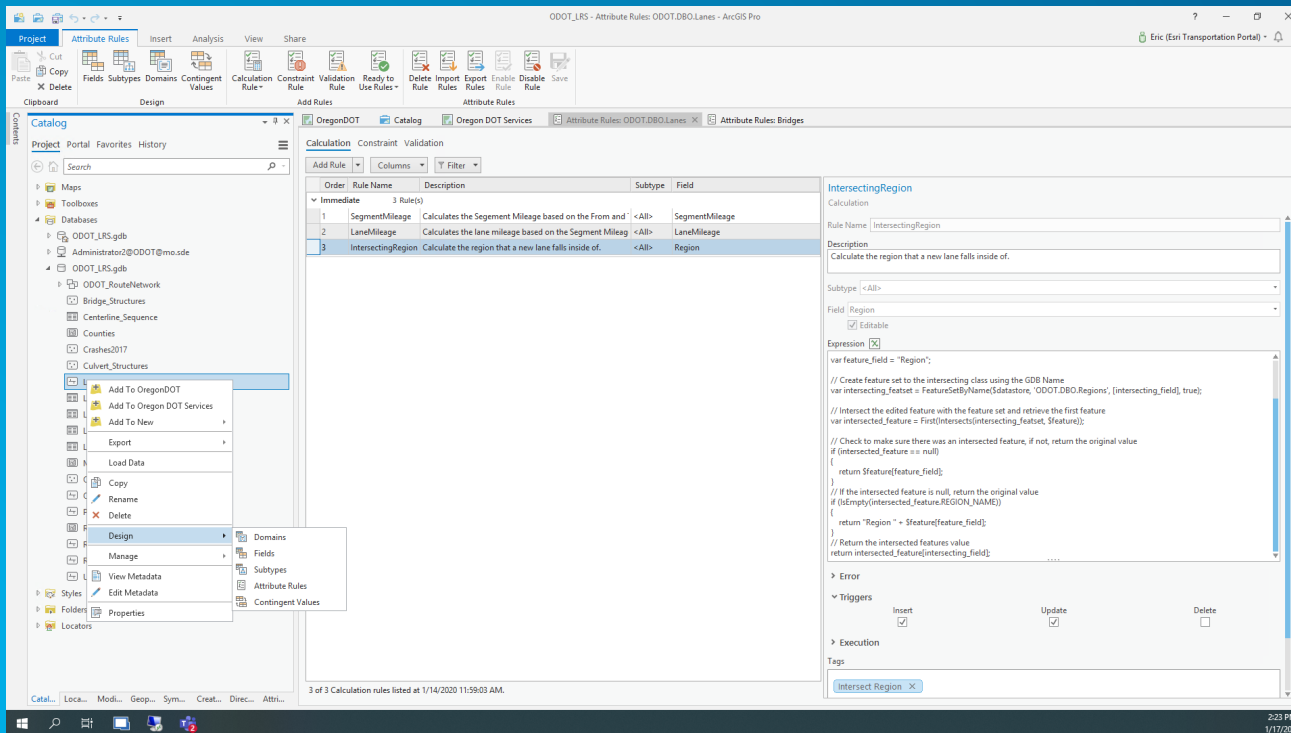


# Using Attribute Rules with Roads and Highways

Eric Rodenberg – Solution Engineer – Highways

# What are Attribute Rules

- User defined rules to enhance the editing experience and improve data integrity
  - Supported in Enterprise GeoDatabases
  - Defined in feature classes or tables
  - Applied via ArcGIS Pro using Arcade Scripting



## Why are Attribute Rules Important

- Every DOT has some level of QA/QC that is performed on their data and many of these processes occur after data has been edited.
- These workflows generally involve multiple people, including editors, supervisors and data administrators.
- Post Processing slows down the time get data to the business units that need it.

# Attribute Rules Takeaways



**Automatically  
Populate  
Attribute  
Values**



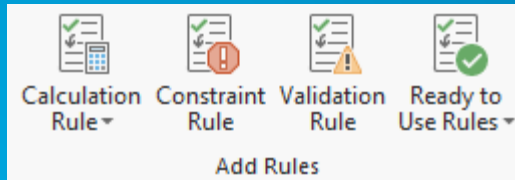
**Perform QA  
Checks on  
Existing  
Features**



**Constrain  
Invalid  
Edits**

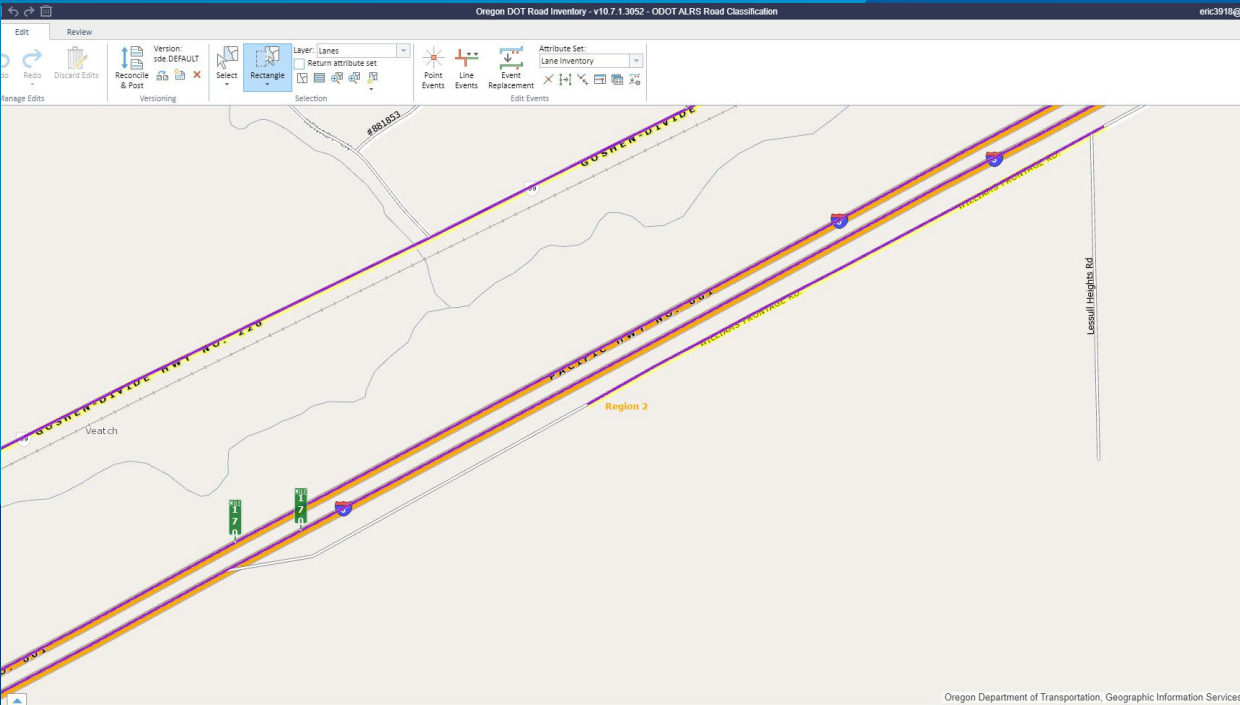
# Attribute Rule Types

- **Evaluated at edit operations (Insert, Update and Delete)**
  - **Immediate Calculation – Populate an Attribute**
  - **Constraint – Specify Permissible Value**
- **Evaluated by validation service**
  - **Batch Calculation – Populate Attribute**
  - **Validation – Validate Existing Data**



# Immediate Calculation Rules

- **Automatically populates an attribute**
- **Applied to a Target Field**
  - Can be user editable or read-only by “Editable”
- **Evaluated during edit operations**
  - Insert, update or delete
- **Evaluation order between immediate calculation rules**

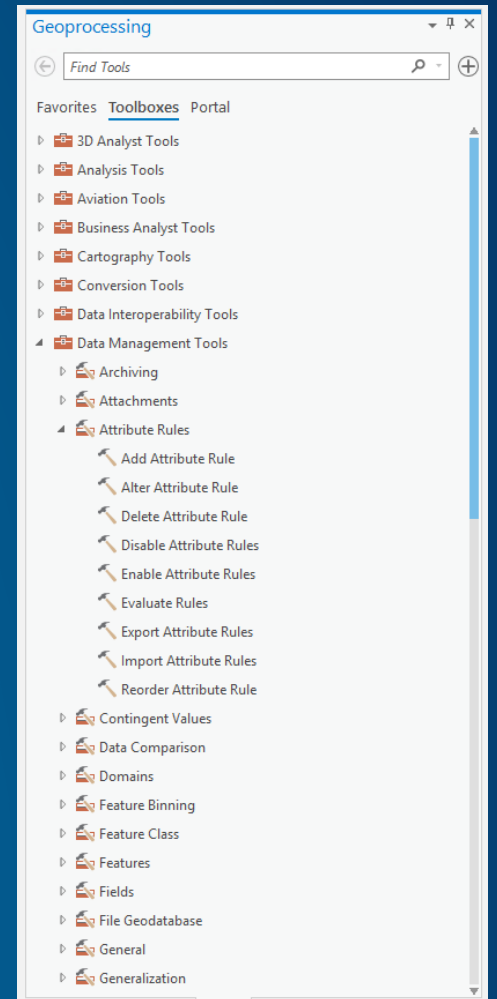
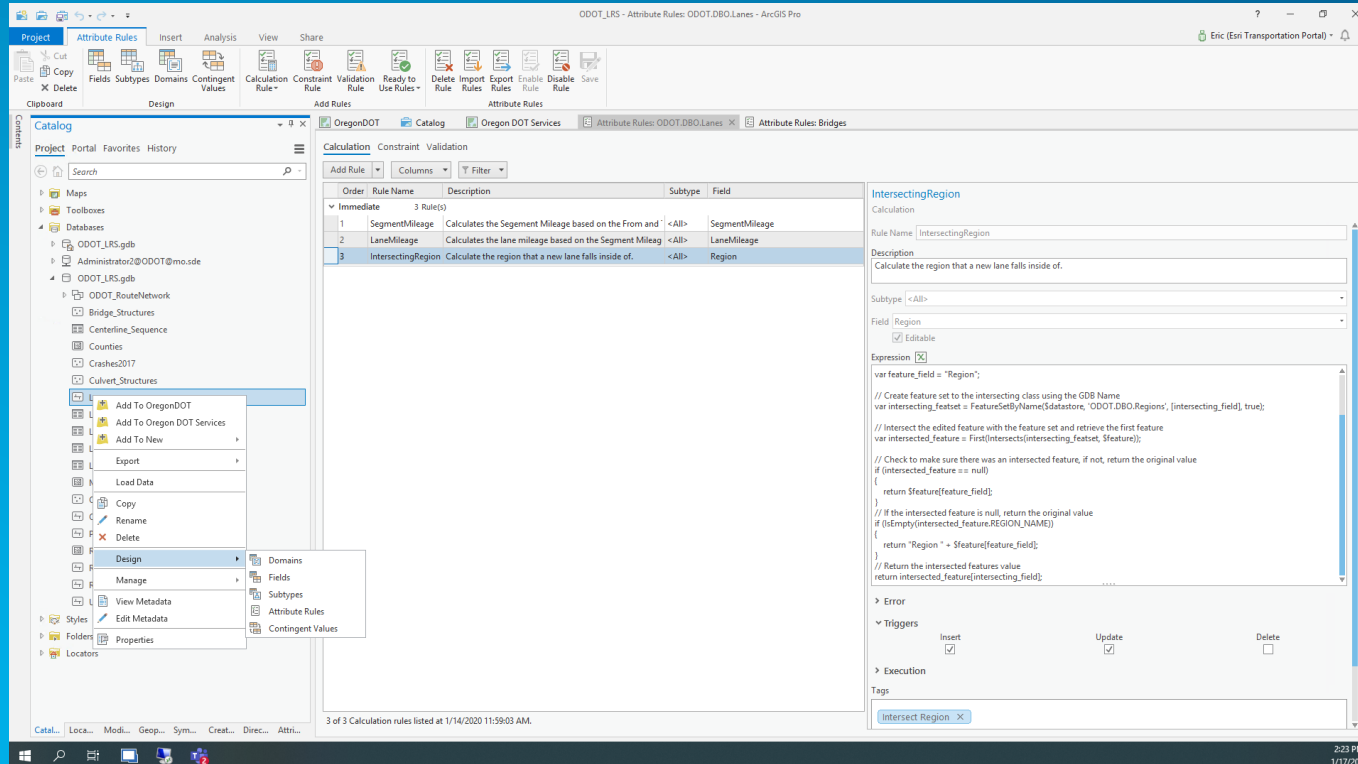


# Using Attribute Rules with Event Editor

Eric Rodenberg

# Summary

- Attribute Rules
  - Automatically populate attributes
  - Immediately improve data editing workflows
  - Gets data to your apps faster by eliminating post processing workflows.







esri

THE  
SCIENCE  
OF  
WHERE