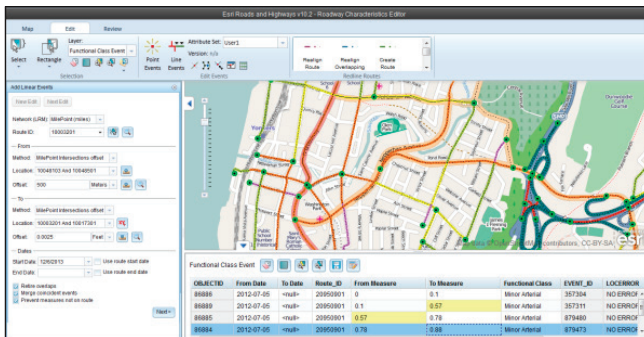


# Esri® Roads and Highways

Esri® Roads and Highways is a new extension for ArcGIS® for Desktop and ArcGIS for Server. Agencies responsible for road and highway maintenance, and operations can use this solution to get a unified view of the roadways and related assets they manage. With Esri Roads and Highways, you can easily overlay data from multiple linear referencing system (LRS) networks—even when that data is stored in many separate systems across the enterprise. This single, integrated view gives you the information you need to make better decisions and generate reports.

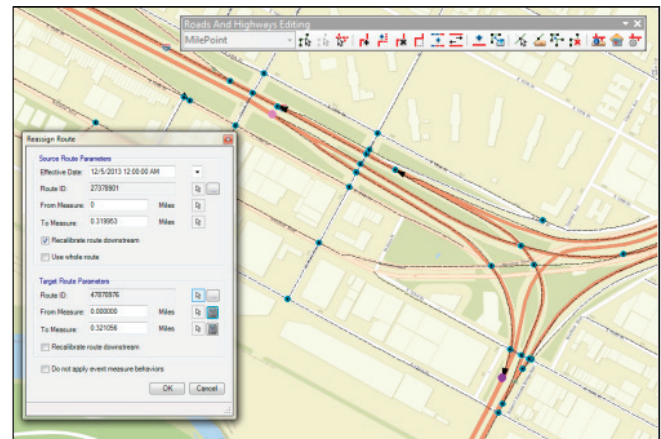
## Integrate Data

Highway agencies manage and maintain a broad spectrum of information about their roadways. Often, this information is distributed throughout the agency in multiple, disparate systems. For example, the public safety department might maintain crash data based on mileposts located along the highway, while the maintenance department may locate sign and pavement assets based on the distance from a known point of origin. With Esri Roads and Highways, the measures associated with data in these external systems can be kept current and synchronized with edits made to the LRS, enabling data interoperability and sharing across all business units.



## Edit across the Web

With Esri Roads and Highways, you can perform roadway characteristics editing on any HTML5-enabled web browser. This allows organizations to extend the reach of their workflows across the enterprise to include users and groups without prior GIS software and application accessibility. These groups can create and edit event data in a mapcentric experience from within a web browser.



## Simplify LRS Updates

Easily visualize and maintain your roadway networks and associated data. Rule-based location management allows you to define how event measures and route associations should react to changes in the LRS, keeping your business data aligned with roadway network changes.

