

A Federal Trails Group is exploring ways to assimilate existing recreational trail information with trail centerlines and minimal attribution leading to the eventual establishment of an authoritative geospatial National Trails Database for the country. Partnerships with both public and private groups have resulted in a growing trails database, but new partnerships will be needed for more comprehensive national trails. The USGS is investigating a Trails Partner Project concept to utilize trails data collected by authoritative trails organizations. Other proposed collection efforts are being explored with Federal agencies.

+

# Agenda

May 19, 2015

2

- **Proposal for Federal Trails Collaboration**
  - **Intro**
  - **Current Issues**
  - **Proposed Solution**
  - **Comments and Suggestions**



# + Introduction

## USGS

Information on recreational trails on federal lands occur in many forms distributed across the landscape among multiple agencies, managers, and sites with no common enterprise architecture to support efficient government-wide or agency-wide management of these data sources. The purpose of this presentation is to discuss a partnership of Federal Land Management Agencies to create an authoritative, seamless, geospatial recreational trails dataset for the country.

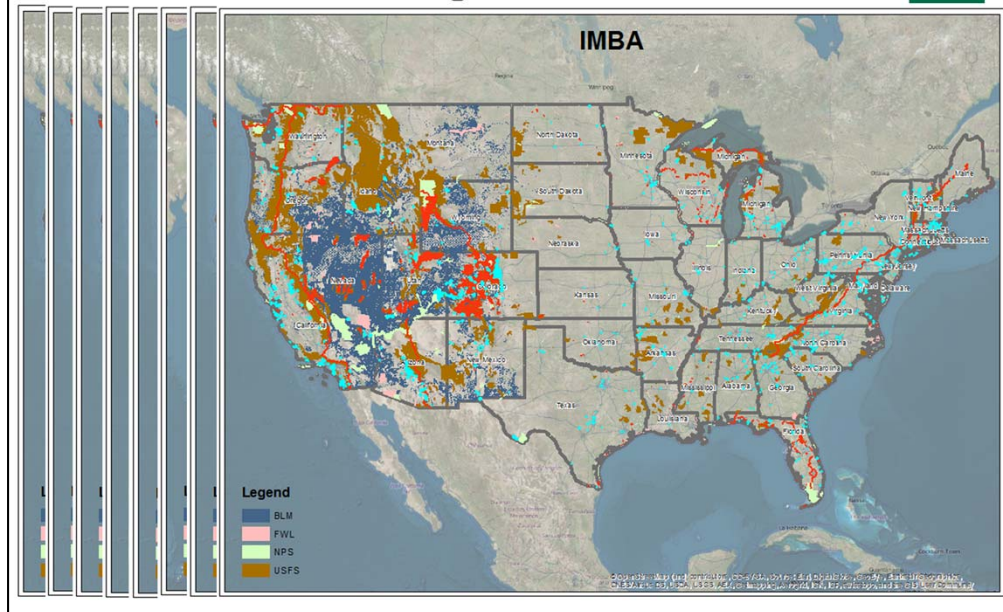


US Army Corps of Engineers®



## + Current Issues What We've Been Doing

4



### Current Issues

The USFS is integrating local and regional trails data into their Enterprise Data Warehouse. This has been a time-consuming process for the USFS since the initial effort of integrating data in Colorado as a test. The USFS would like to begin sharing trails data with the USGS, but at this point has not been able to commit to a publication schedule.

**NPS** is consolidating national trails and some structure points in anticipation of their upcoming Centennial celebration. NPS has expressed interest in sharing their trails data with the USGS and is expected to give the USGS preliminary trails data for testing purposes by August 2015. The NPS does not yet have an estimate of how much time it will take them to share their national trails with the USGS.

- North County Scenic Trail
- New England Scenic Trail
- Natchez Trace Scenic Trail
- Continental Divide Scenic Trail
- Appalachian National Scenic Trail

The **USFS** has provided complete data over CO and partial data over Nevada, Utah, Washington, Oregon, Florida and California. FS has been integrating data nationally into their Enterprise Data Warehouse and are providing this intermittently to the USGS.

The **FWL** has completed trails nationally and this data has been integrated into USGS products.

The **BLM** is also beginning to integrate their local and regional trails systems into a national database. BLM is currently working with IMBA to map trail systems in some parts of the country as a test. The BLM has expressed interest in sharing their trails with the USGS but feel they are too early in the integration process to begin sharing their trails data.

The **Alaska** Department of Natural Resources is the first state agency to provide data for USGS but we're hoping this will be a growing trend.

**Trails Associations** we are working with include the Ice Age Trail Alliance which covers the Ice Age Scenic Trail and the USFS and Arizona Trails Association which covers the Arizona National Scenic Trail.

The USGS has been working with **IMBA and Adventure Projects LLC** for the past year. This is nationally consistent data that is reviewed by both IMBA and check with local authorities.

I believe if agencies don't begin sharing trails data with the USGS, solutions such as OpenStreetMap, Google, and others will increasingly become the go-to source for what is available through crowdsourcing and without regard for which trails are illegal. This will result in unofficial trails sources creating management problems for the various agencies. If trails data is published through the USGS, it may be seen as a preferred single source for trails and agencies will be able to manage what is shown. This is a time-sensitive issue as there are already many interested parties gathering and crowdsourcing public trails and publishing them.

+ **Proposed Solution**  
**Federal Trails Collaboration**

5

FY Prod	Project	Date Needed	FY Prod	Project	Date Needed
2016	Iowa	8/12/2015	2016	North Carolina	4/28/2016
2016	Wisconsin	9/4/2015	2016	Virginia	5/18/2016
2016	Kansas	9/22/2015	2016	Pennsylvania	6/1/2016
2016	Oklahoma	10/23/2015	2016	New York	6/14/2016
2016	Texas	10/1/2015	2016	Colorado	6/20/2016
2016	Kentucky	2/22/2016	2016	Puerto Rico	7/21/2016
2016	Tennessee	3/4/2016	2016	Hawaii	7/27/2016
2016	Indiana	3/18/2016	2016	Pacific	8/4/2016
2016	Minnesota	3/15/2016			



**Proposed Solution**

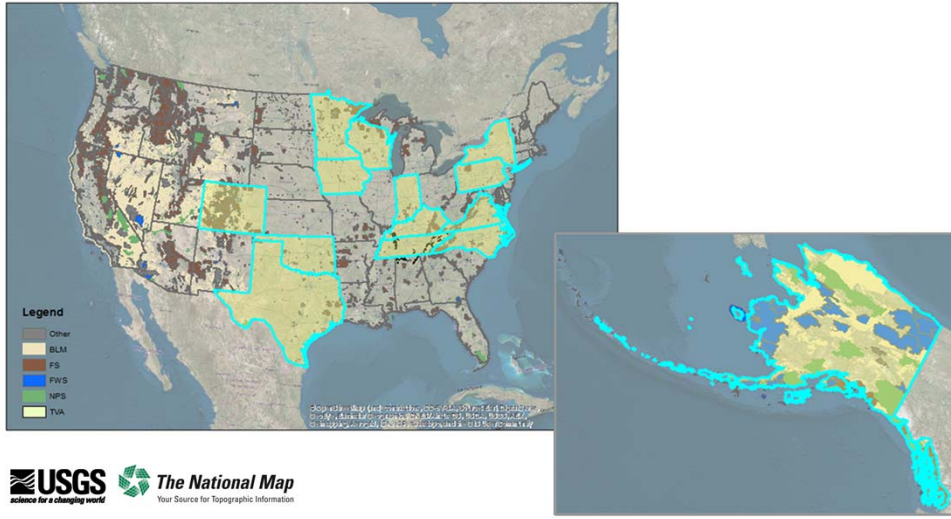
The USGS updates and publishes US Topo maps for approximately one third of the nation every year over the continental US. If agencies are willing to work with the USGS to make trails data available over upcoming states, we would have the majority of federal lands trails data completed in three years.

I recommend following the schedule below as way to begin partnerships to share trails data and make it available to the public. Collaboration could begin by agencies finding a jumping-in point for our US Topo production schedule. Where agencies can provide trails data over states by the “Trails Date Needed,” the USGS can begin showing these trails on The US Topo when quads over that state are produced.

# + Proposed Solution

6

## Distribution of Federal Lands

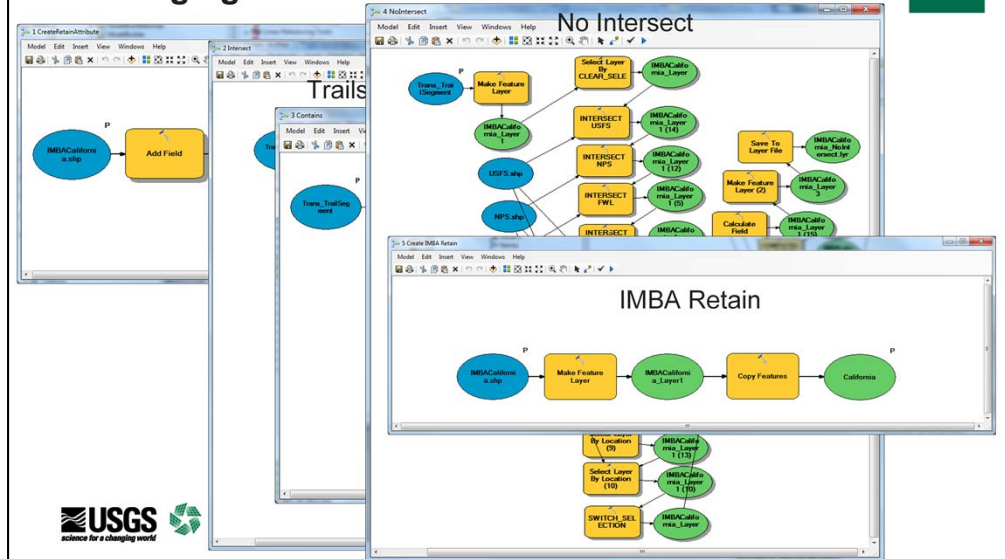


This type of agreement would be a good way for staff to begin working together, for data to be tested, confidence to be gained in our ability to work together for this common purpose, and a political win for our agencies to make this data available to the public. The USGS is requesting that your agency partner with us on this production schedule as a trial run. The data doesn't have to be exact, the schedule is relaxed, and we believe the goals are achievable. Even if some states or areas are skipped, it would not create a failure in this process.

# + Proposed Solution

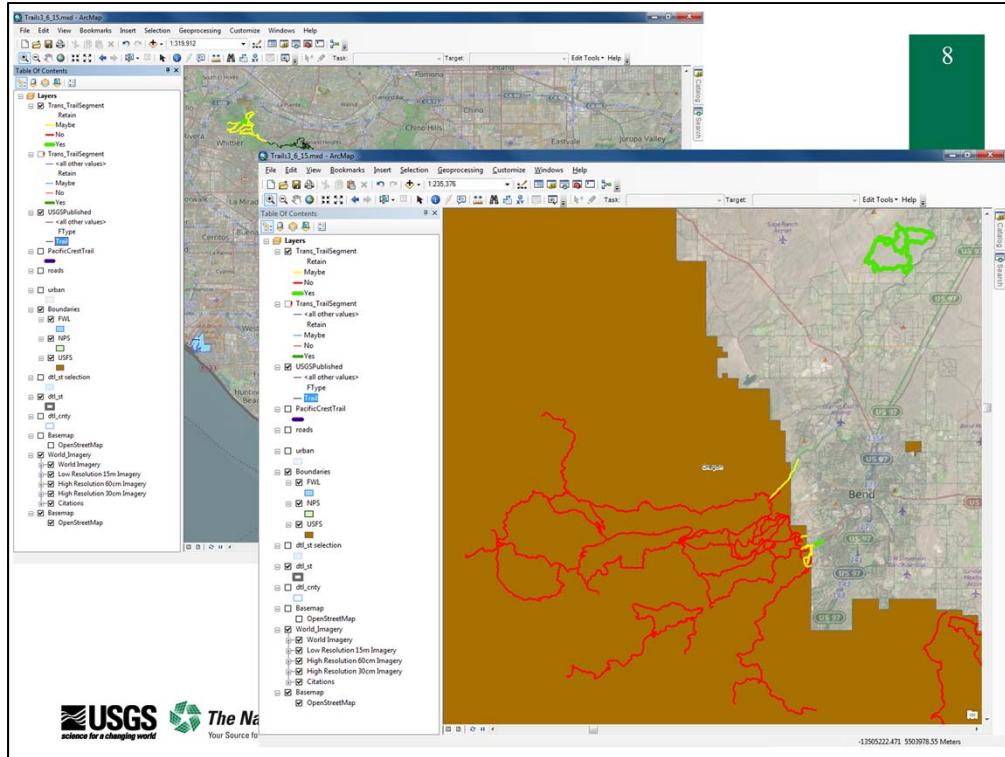
7

## Managing Conflicts

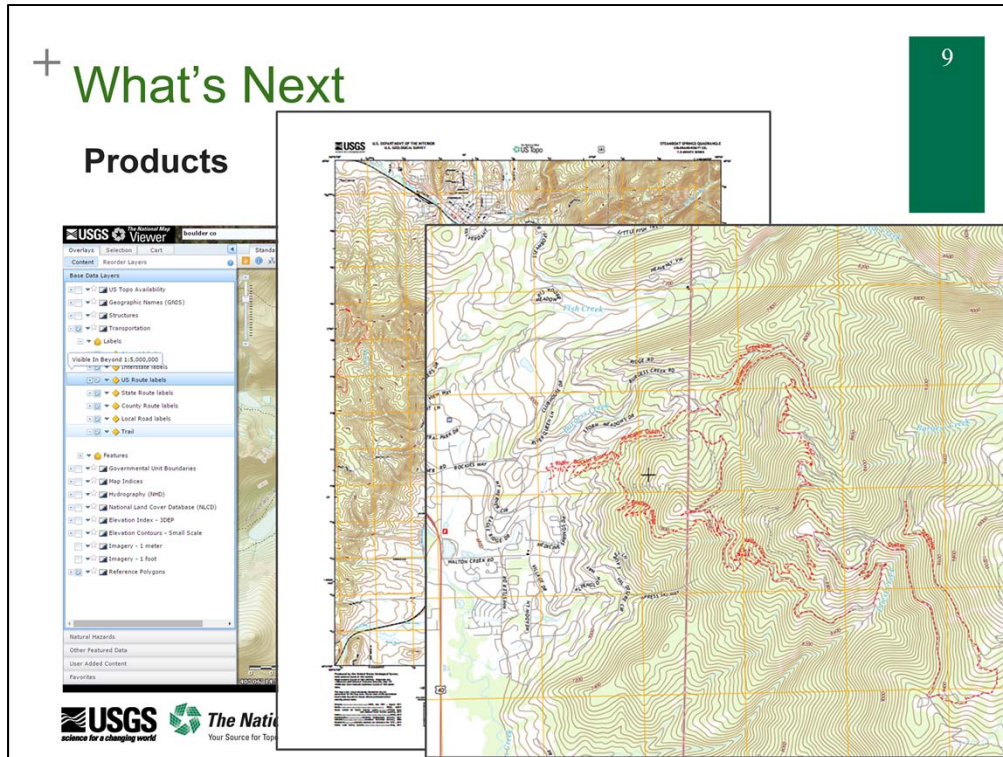


Make an efficient process to bring in data, look for conflicts and flag problems. Talk through trail intake processing steps. Besides these steps, we also review trail names to make sure they're appropriate.





Green lines have no conflicts with Govt Lands or pre-existing trails. Yellow lines touch or overlap Govt Lands or pre-existing trails. Red lines show where trails are completely contained by Govt Lands.



## + What's Next

### Products

The final products overview:

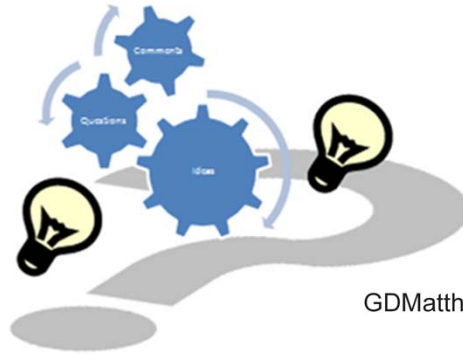
[The National Map Viewer and Download Platform](#) allows visualization and [download](#) of our most current topographic base map data and products for free. Managed by the USGS National Geospatial Program (NGP), users can access data from all eight primary data themes of *The National Map*, and products, such as US Topo, Historical Topographic Maps, and Map Indices. The viewer platform was initially extended upon the National Geospatial Intelligence Agency's (NGA) Palanterra x3 viewer.

US Topo topographic maps are produced by the [National Geospatial Program](#) of the [U.S. Geological Survey](#) (USGS). The project was launched in late 2009, and the term "US Topo" refers specifically to quadrangle topographic maps published in 2009 and later. These maps are modeled on the familiar 7.5-minute quadrangle maps of the period 1947-1992, but are mass-produced from national GIS databases on a repeating cycle. US Topo maps repackage geographic information system (GIS) data in traditional map form; this benefits non-specialist map users, as well as applications that need traditional maps.

# + The End

Questions / Comments / Ideas

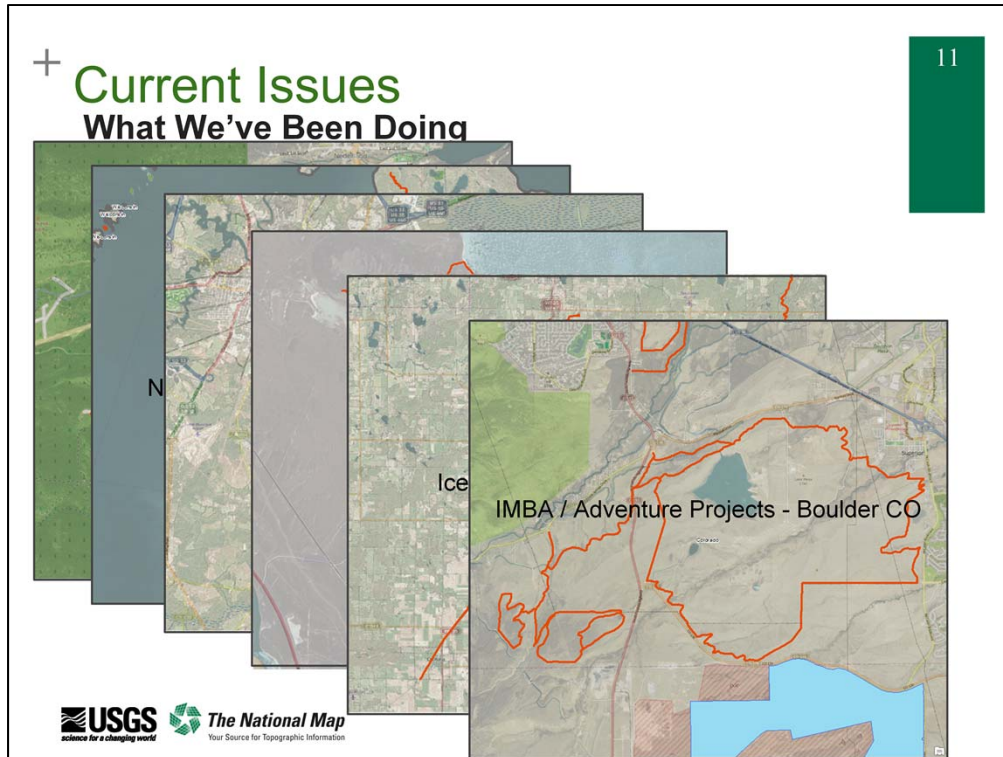
10



**Greg Matthews**  
GDMatthews@USGS.GOV



Thank you for considering this partnership proposal. We hope you will be able to begin working with the USGS to unite federal trails with the people who want to use them. We believe working with your agency will create a win/win scenario with our agencies and the public.



## Current Issues

The USFS is integrating local and regional trails data into their Enterprise Data Warehouse. This has been a time-consuming process for the USFS since the initial effort of integrating data in Colorado as a test. The USFS would like to begin sharing trails data with the USGS, but at this point has not been able to commit to a publication schedule.

NPS is consolidating national trails and some structure points in anticipation of their upcoming Centennial celebration. NPS has expressed interest in sharing their trails data with the USGS and is expected to give the USGS preliminary trails data for testing purposes by August 2015. The NPS does not yet have an estimate of how much time it will take them to share their national trails with the USGS.

The BLM is also beginning to integrate their local and regional trails systems into a national database. BLM is currently working with IMBA to map trail systems in some parts of the country as a test. The BLM has expressed interest in sharing their trails with the USGS but feel they are too early in the integration process to begin sharing their trails data.

I believe if agencies don't begin sharing trails data with the USGS, solutions such as OpenStreetMap, Google, and others will increasingly become the go-to source for what is available through crowdsourcing and without regard for which trails are illegal. This will result in unofficial trails sources creating management problems for the various agencies. If trails data is published through the USGS, it may be seen as a preferred single source for trails and agencies will be able to manage what is shown. This is a time-sensitive issue as there are already many interested parties gathering and crowdsourcing public trails and publishing them.