

A Federal Trails Group is exploring ways to assimilate existing recreational trail information with trail centerlines and minimal attribution leading to the eventual establishment of an authoritative geospatial National Trails Database for the country. Partnerships with both public and private groups have resulted in a growing trails database, but new partnerships will be needed for more comprehensive national trails. The USGS is investigating a Trails Partner Project concept to utilize trails data collected by authoritative trails organizations. Other proposed collection efforts are being explored with Federal agencies.



# Agenda

May 19, 2015

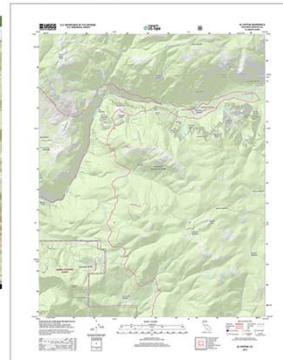
2

- **Who we are and what we do**
  - **USGS**
    - **What our role?**
  - **Partnerships with other federal agencies**
    - **USFS**
    - **NPS**
    - **FWL**
  - **Partnerships with trails advocacy groups**
    - **Various .COM and .ORG's**
    - **Partnerships with IMBA**
    - **State of Alaska**
- **What's next? Trail Partner Project**
  - **The Pages**
  - **Processing the Data**
  - **Products**
  - **Questions and Comments**



## + Who we are and what we do

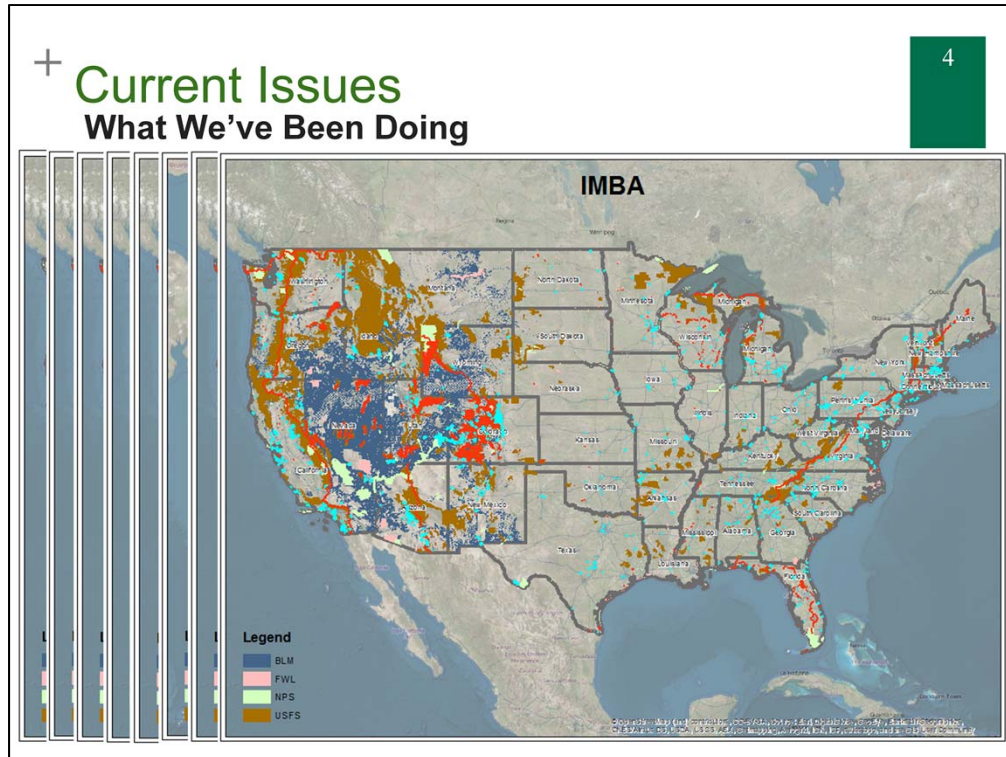
3



A Federal Trails Group is exploring ways to assimilate existing recreational trail information with trail centerlines and minimal attribution leading to the eventual establishment of an authoritative geospatial National Trails Database for the country. Partnerships with both public and private groups have resulted in a growing trails database, but new partnerships will be needed for more comprehensive national trails.



The USGS is in the Department of Interior. Within the USGS there is the National Geospatial Program. Within the NPG, the National Geospatial Technical Operations Center manages both The National Map and US Topo products. The data and products are available as public domain.



## Current Issues

The USFS is integrating local and regional trails data into their Enterprise Data Warehouse. This has been a time-consuming process for the USFS since the initial effort of integrating data in Colorado as a test. The USFS would like to begin sharing trails data with the USGS, but at this point has not been able to commit to a publication schedule.

**NPS** is consolidating national trails and some structure points in anticipation of their upcoming Centennial celebration. NPS has expressed interest in sharing their trails data with the USGS and is expected to give the USGS preliminary trails data for testing purposes by August 2015. The NPS does not yet have an estimate of how much time it will take them to share their national trails with the USGS.

- North County Scenic Trail
- New England Scenic Trail
- Natchez Trace Scenic Trail
- Continental Divide Scenic Trail
- Appalachian National Scenic Trail

The **USFS** has provided complete data over CO and partial data over Nevada, Utah, Washington, Oregon, Florida and California. FS has been integrating data nationally into their Enterprise Data Warehouse and are providing this intermittently to the USGS.

The **FWL** has completed trails nationally and this data has been integrated into USGS products.

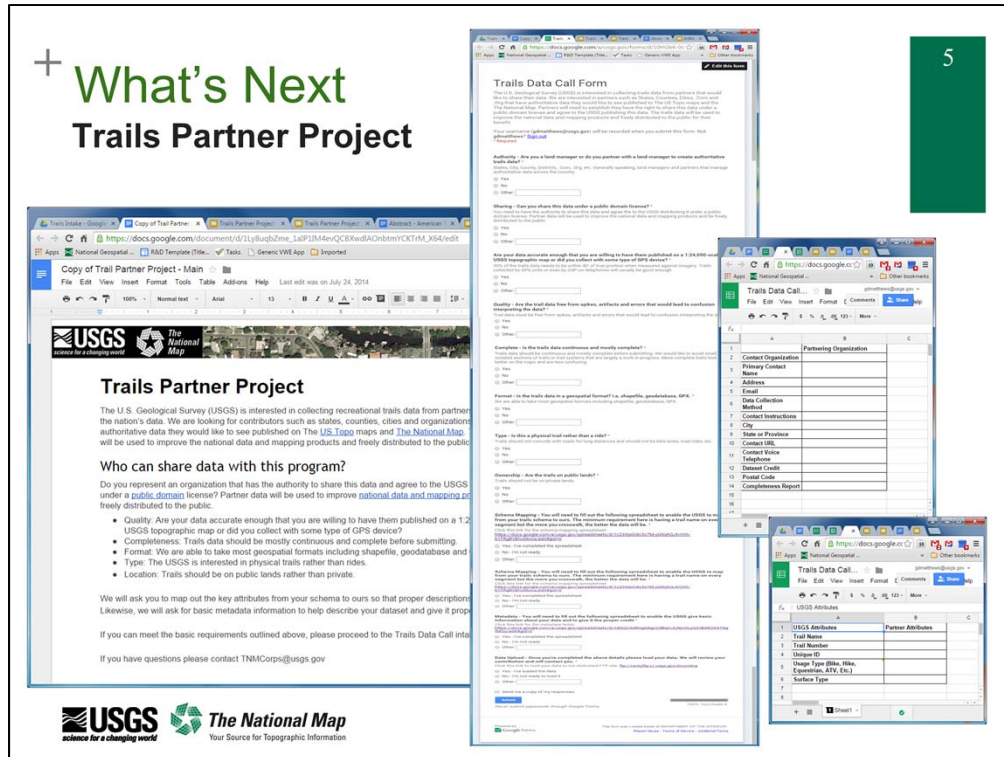
The **BLM** is also beginning to integrate their local and regional trails systems into a national database. BLM is currently working with IMBA to map trail systems in some parts of the country as a test. The BLM has expressed interest in sharing their trails with the USGS but feel they are too early in the integration process to begin sharing their trails data.

The **Alaska** Department of Natural Resources is the first state agency to provide data for USGS but we're hoping this will be a growing trend.

**Trails Associations** we are working with include the Ice Age Trail Alliance which covers the Ice Age Scenic Trail and the USFS and Arizona Trails Association which covers the Arizona National Scenic Trail.

The USGS has been working with **IMBA and Adventure Projects LLC** for the past year. This is nationally consistent data that is reviewed by both IMBA and check with local authorities.

I believe if agencies don't begin sharing trails data with the USGS, solutions such as OpenStreetMap, Google, and others will increasingly become the go-to source for what is available through crowdsourcing and without regard for which trails are illegal. This will result in unofficial trails sources creating management problems for the various agencies. If trails data is published through the USGS, it may be seen as a preferred single source for trails and agencies will be able to manage what is shown. This is a time-sensitive issue as there are already many interested parties gathering and crowdsourcing public trails and publishing them.



## Trails Partner Project

The U.S. Geological Survey (USGS) is interested in collecting recreational trails data from partners to help improve the nation's data. We are looking for contributors such as states, counties, cities and organizations that have authoritative data they would like to see published on [The US Topo](#) maps and [The National Map](#). The trails data will be used to improve the national data and mapping products and freely distributed to the public for their benefit.

### Who can share data with this program?

Do you represent an organization that has the authority to share this data and agree to the USGS distributing it under a [public domain](#) license? Partner data will be used to improve [national data and mapping products](#) and be freely distributed to the public.

- **Quality:** Are your data accurate enough that you are willing to have them published on a 1:24,000-scale USGS topographic map or did you collect with some type of GPS device?
- **Completeness:** Trails data should be mostly continuous and complete before submitting.
- **Format:** We are able to take most geospatial formats including shapefile, geodatabase and GPX.
- **Type:** The USGS is interested in physical trails rather than road rides or bike lanes on roadsides.
- **Location:** Trails should be on public lands rather than private.

We will ask you to map out the key attributes from your schema to ours so that proper descriptions can be applied. Likewise, we will ask for basic metadata information to help describe your dataset and give it proper attribution.

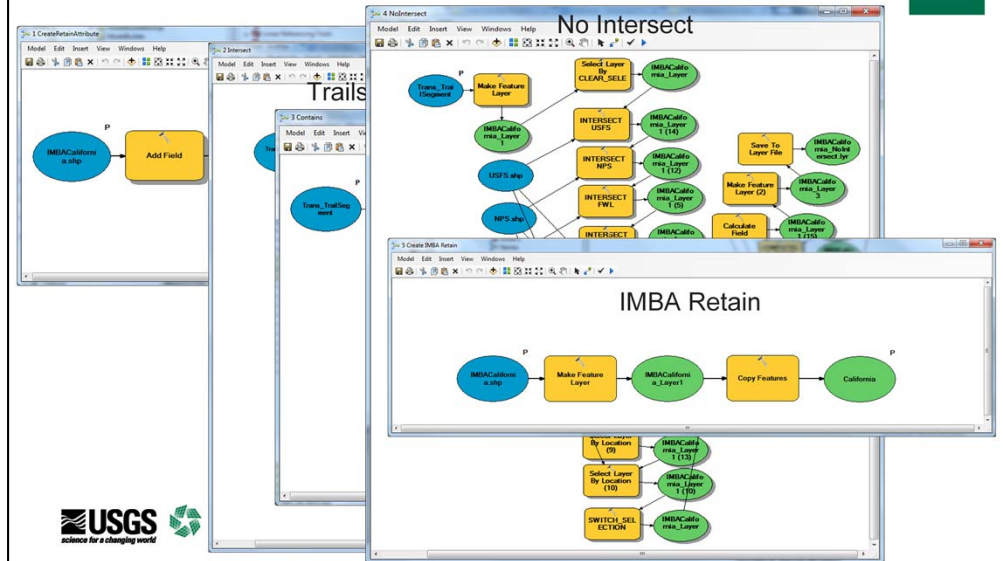
**If you can meet the basic requirements outlined above, please to the Trails Data Call intake form [here](#).**

If you have questions please contact [TNMCorps@usgs.gov](mailto:TNMCorps@usgs.gov)

# + What's Next

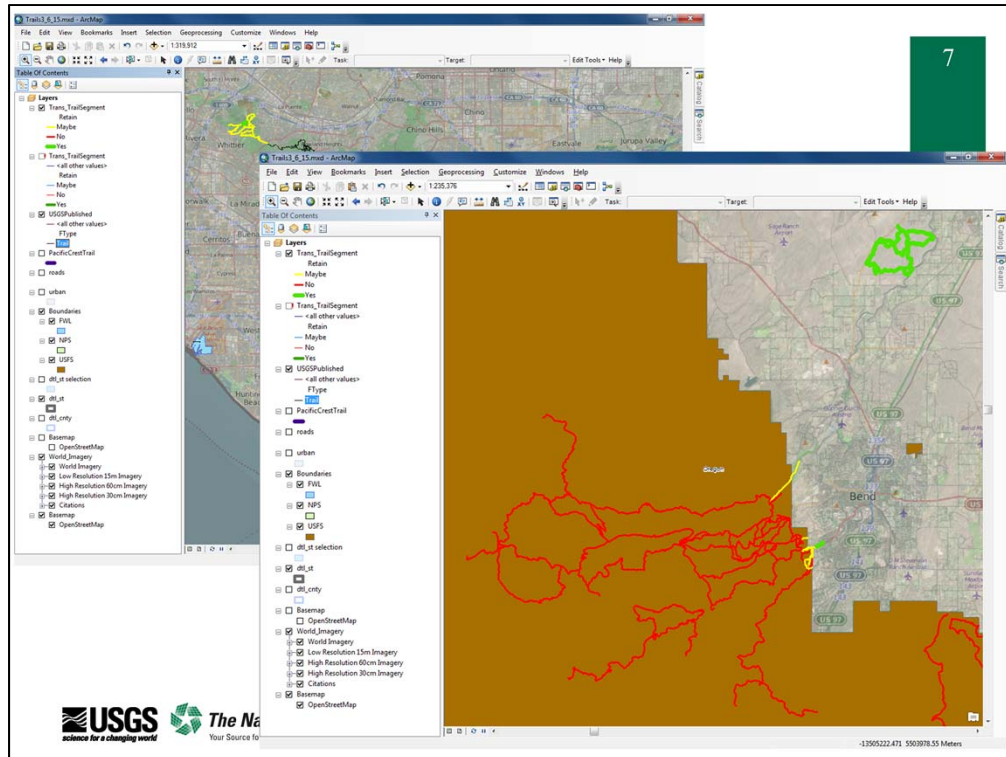
## Processing Trails Data

6

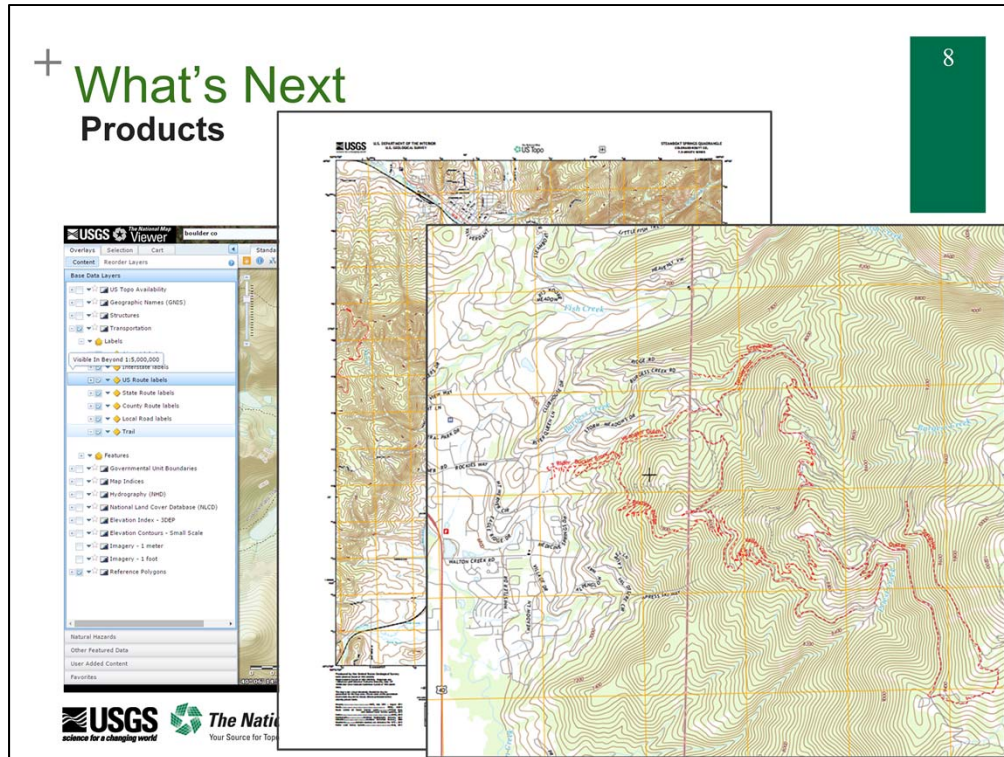


Make an efficient process to bring in data, look for conflicts and flag problems. Talk through trail intake processing steps. Besides these steps, we also review trail names to make sure they're appropriate.





Green lines have no conflicts with Govt Lands or pre-existing trails. Yellow lines touch or overlap Govt Lands or pre-existing trails. Red lines show where trails are completely contained by Govt Lands.



The final products overview:

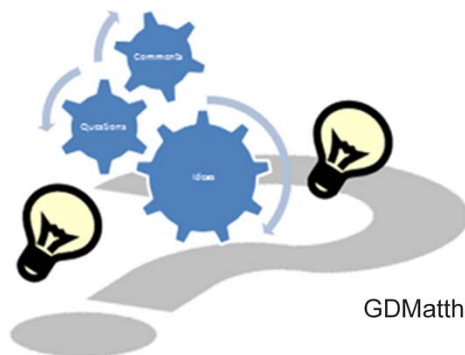
[The National Map Viewer and Download Platform](#) allows visualization and [download](#) of our most current topographic base map data and products for free. Managed by the USGS National Geospatial Program (NGP), users can access data from all eight primary data themes of *The National Map*, and products, such as US Topo, Historical Topographic Maps, and Map Indices. The viewer platform was initially extended upon the National Geospatial Intelligence Agency's (NGA) Palantira x3 viewer.

US Topo topographic maps are produced by the [National Geospatial Program](#) of the [U.S. Geological Survey](#) (USGS). The project was launched in late 2009, and the term "US Topo" refers specifically to quadrangle topographic maps published in 2009 and later. These maps are modeled on the familiar 7.5-minute quadrangle maps of the period 1947-1992, but are mass-produced from national GIS databases on a repeating cycle. US Topo maps repackage geographic information system (GIS) data in traditional map form; this benefits non-specialist map users, as well as applications that need traditional maps.

# + The End

Questions / Comments / Ideas

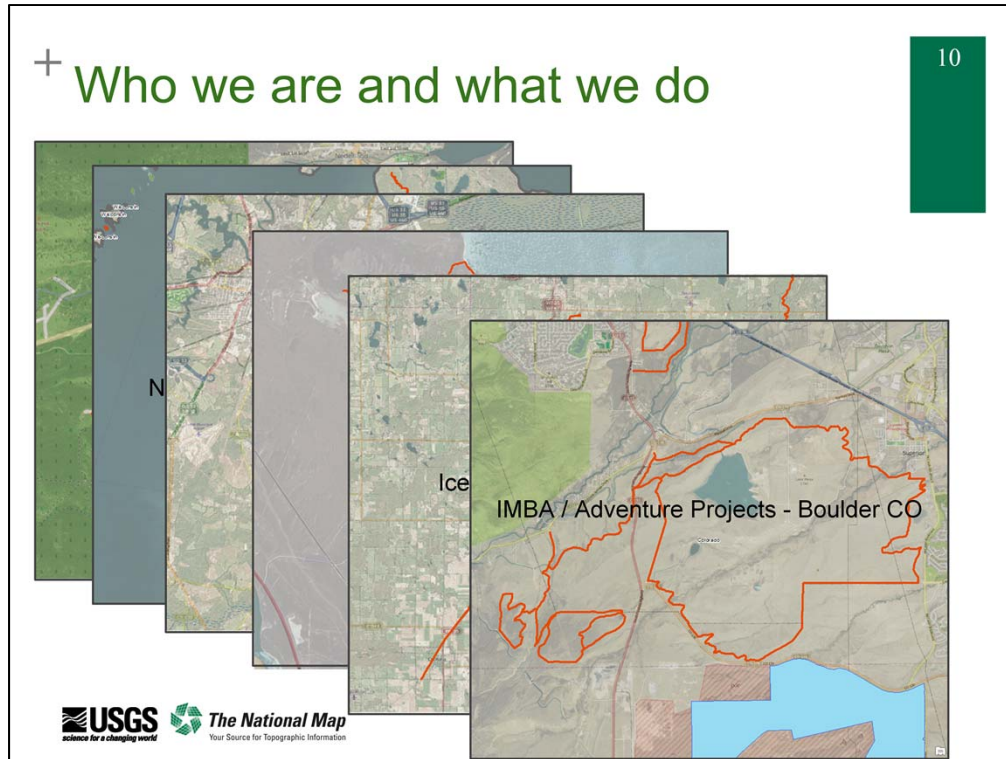
9



**Greg Matthews**  
GDMatthews@USGS.GOV



Solicit feedback and questions.



- What we've been doing
  - Partnerships with other federal agencies
    - USFS
    - NPS
    - FWL
  - Partnerships with trails advocacy groups
  - Partnerships with IMBA
    - Processed most of country